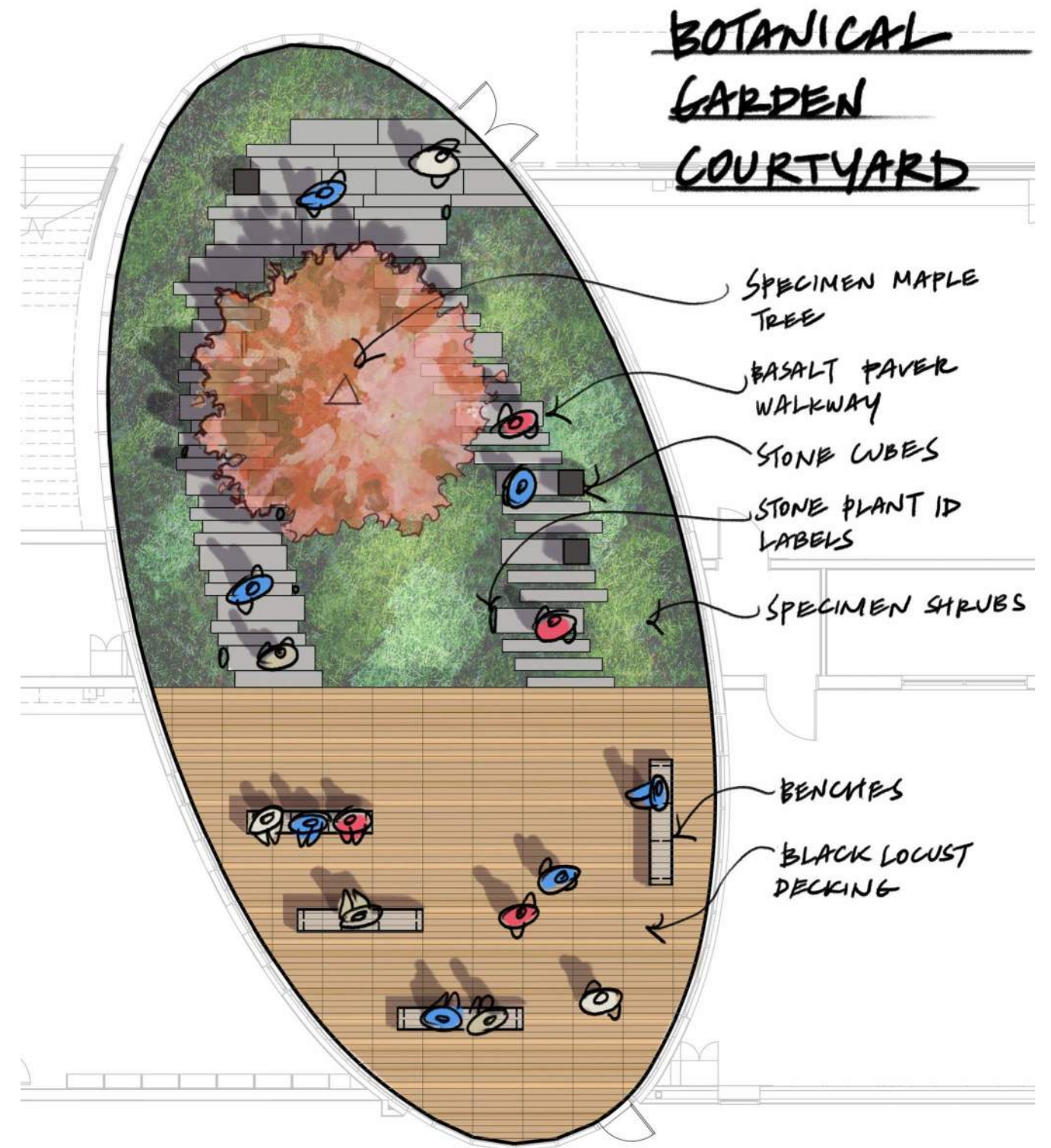
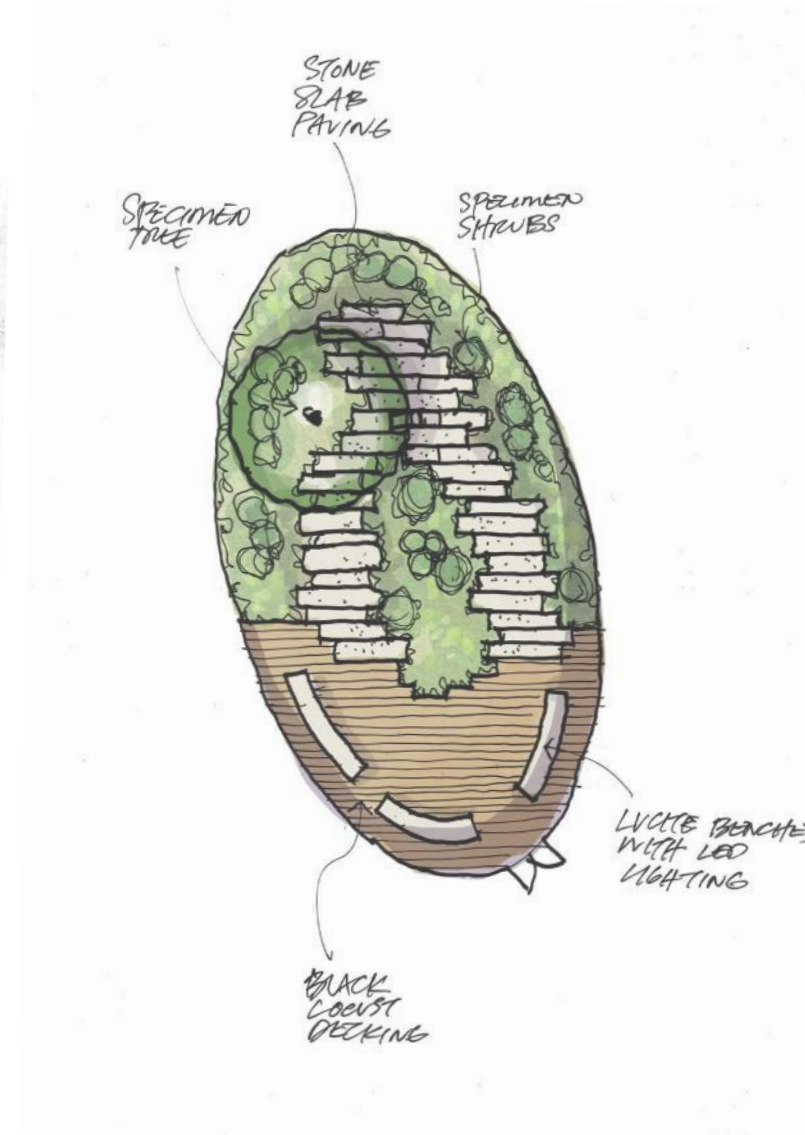
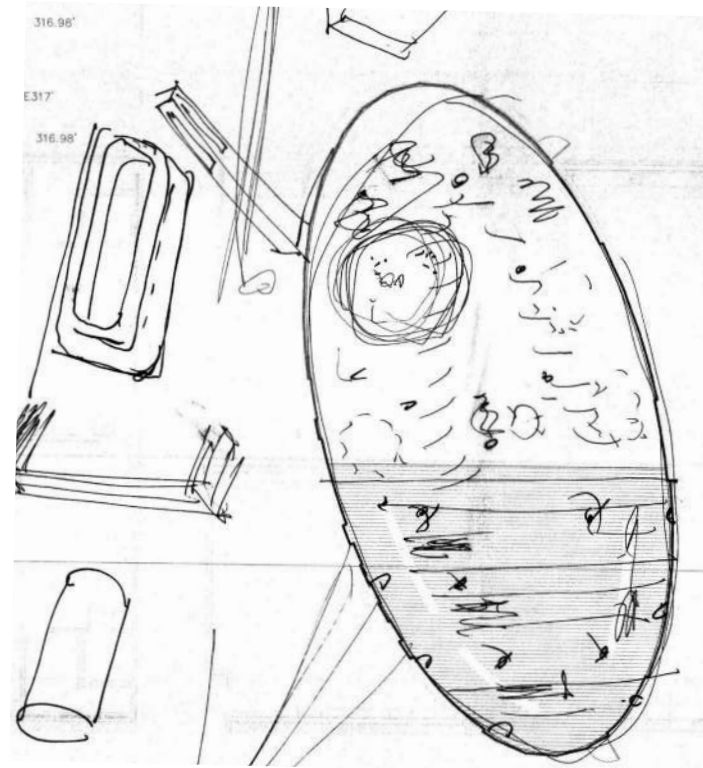


- A** entry plaza
- B** oval courtyard
- C** raingarden courtyard
- D** outdoor classroom
- E** hillside trail
- F** covered play
- G** multi-purpose field
- H** tennis courts
- I** track
- J** visitor/staff parking
- K** drop-off
- L** bike parking & entry oval
- M** trail connector
- N** lake to lake trail & wetland
- O** staff lounge deck & green roof
- P** arboretum

SITE PLAN

Overall site plan showing the relationship of Tillicum Middle School to surrounding wetlands, parks and neighborhood.







6 | VIEW FROM OVAL COURTYARD

Students explore the botanical learning garden, using plant signage for identification.



7 | VIEW FROM OVAL COURTYARD

The oval courtyard and its various seating elements can be used for respite when needing a break, and for formal or informal breakout class activities.



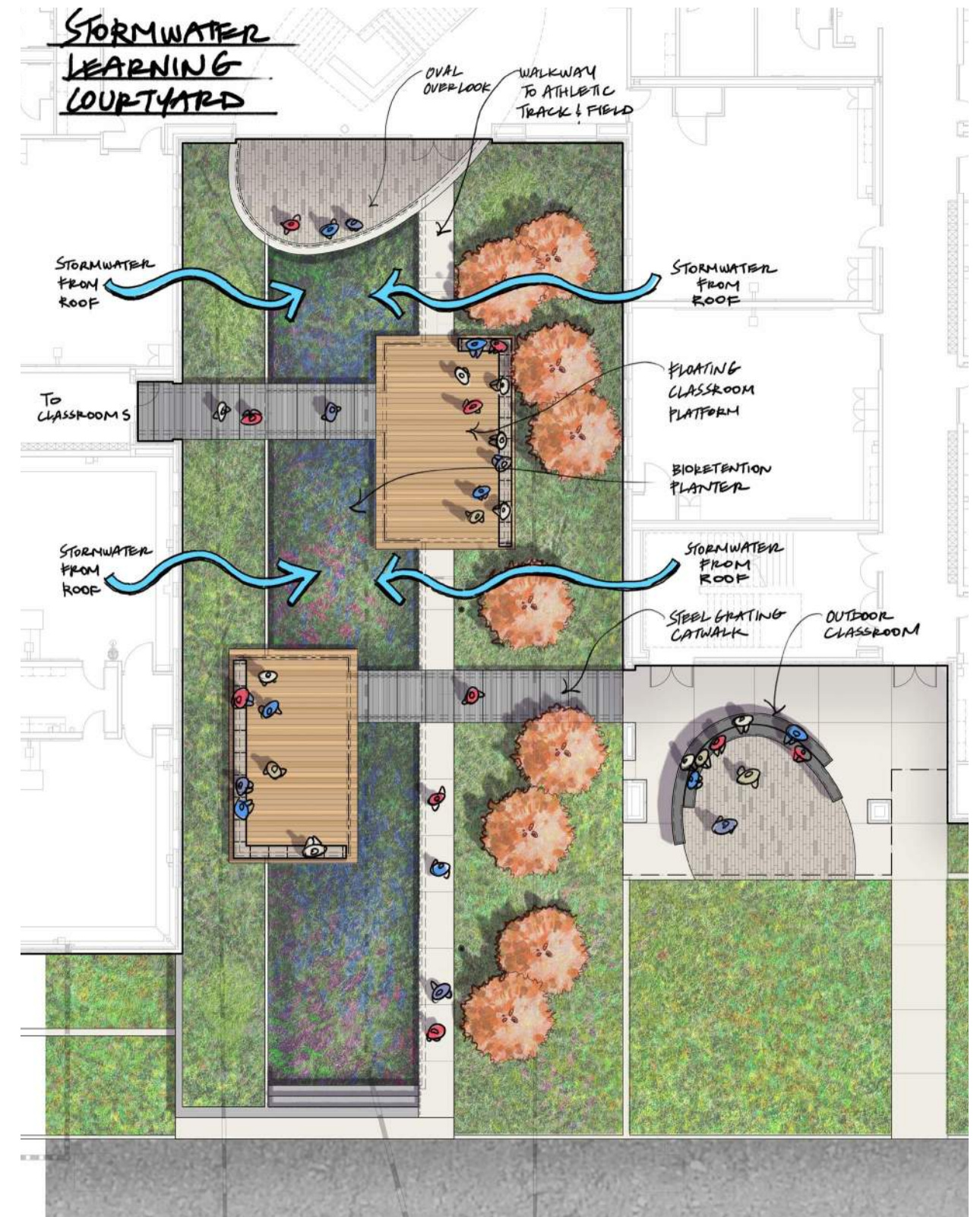
VIEW FROM COMMONS

Floor to ceiling panoramic windows bring the outdoors into the interior through shifting light patterns, with the specimen Japanese Maple visible as changing beacon for all seasons.



9 | VIEW FROM COMMONS

Architectural nooks take advantage of biophilic design opportunities, minimizing barriers between inside learning and the oval courtyard's natural element.



A concept diagram (right) shows the flow of roof runoff to the courtyard rain garden, as well as the various outdoor learning spaces integrated throughout the stormwater infrastructure.



RAINGARDEN COURTYARD

Steel catwalks bridge classroom-sized outdoor learning spaces that lead out to the athletic fields, set above native raingarden planting.



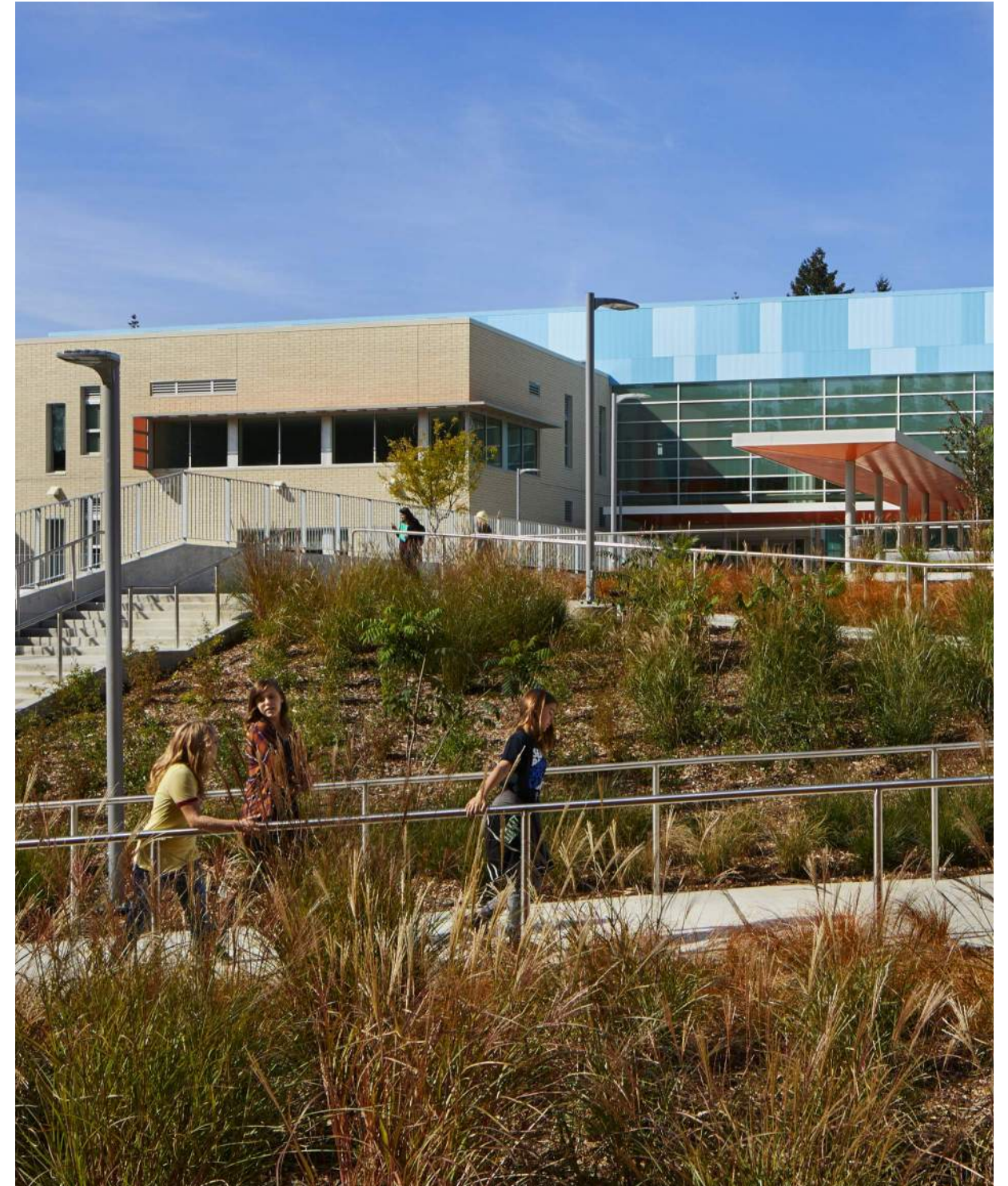
ATHLETIC FIELD VIEW TO TILlicUM MIDDLE SCHOOL

The LA designed athletic fields to the east of the site on flat terrain to reduce earthwork. Here, two covered outdoor classrooms with step seating are visible to student athletes, with the wetland buffer behind us.



STAFF LOUNGE & GREEN ROOF

Green roof plantings including generous sedum plantings surround a deck that serves as an exterior break-room for teachers and staff, and also captures rainwater. Biophilia benefits teachers as well!



Architectural canopy with opening for foundation planting at school entry (left).
Student's take the ADA-accessible ramp though lush accent planting from the baseball field to the school (right).



HILLSIDE TRAIL TO ATHLETIC FIELDS & PLAY

What was a hard grade transition in early design versions became an accessible ramp through a lushly planted slope, with swaths of accent grasses and sumac - connecting to the Lake to Lake trail system.