



---

### **"What Feeds You?"**

Literally writ large over the work yard at the Ballard Food Bank. This is the little project that could, with every element serving multiple functions in service of the food bank's mission of bringing food and hope to their neighbors.

**WHAT FEEDS YOU?**

---

### Setting The Tone

The frontage facing the busy arterial is an interplay between architectural volumes and landscape. The warehouse volume is a backdrop for soft native textures, while the eastern volume gives a hint of the nearby entry with a residential scale treatment.





---

### **A Soft Landing**

This frontage starts its day with a line of patrons, accommodated by seating, amongst raised planters. The curbside area anticipates frequent circulation between vehicle parking and building entry. A narrow back-of-sidewalk planter was to ground the architecture in green.



---

### Welcome All

The planting approach turns the corner onto the neighborhood street, breaking the pattern to announce the building entry. Supporting the entry sequence, a bioretention planter provides a soft foreground from the interior windowfront perch to the streetscape beyond.





**Hardworking Streetscape**

In the right-of-way, the mission is supported both by growing decorative (and harvest-able) herbs as well as plantings that support pollinators that many of the edible plants need to thrive.



---

### **Volunteer-Powered Agriculture**

P-patches to be managed by volunteers to grow food to be added to the food bank store are placed in raised ADA-accessible height planters, taking advantage of proximity to the 8' perimeter fence to train twining vegetables.



---

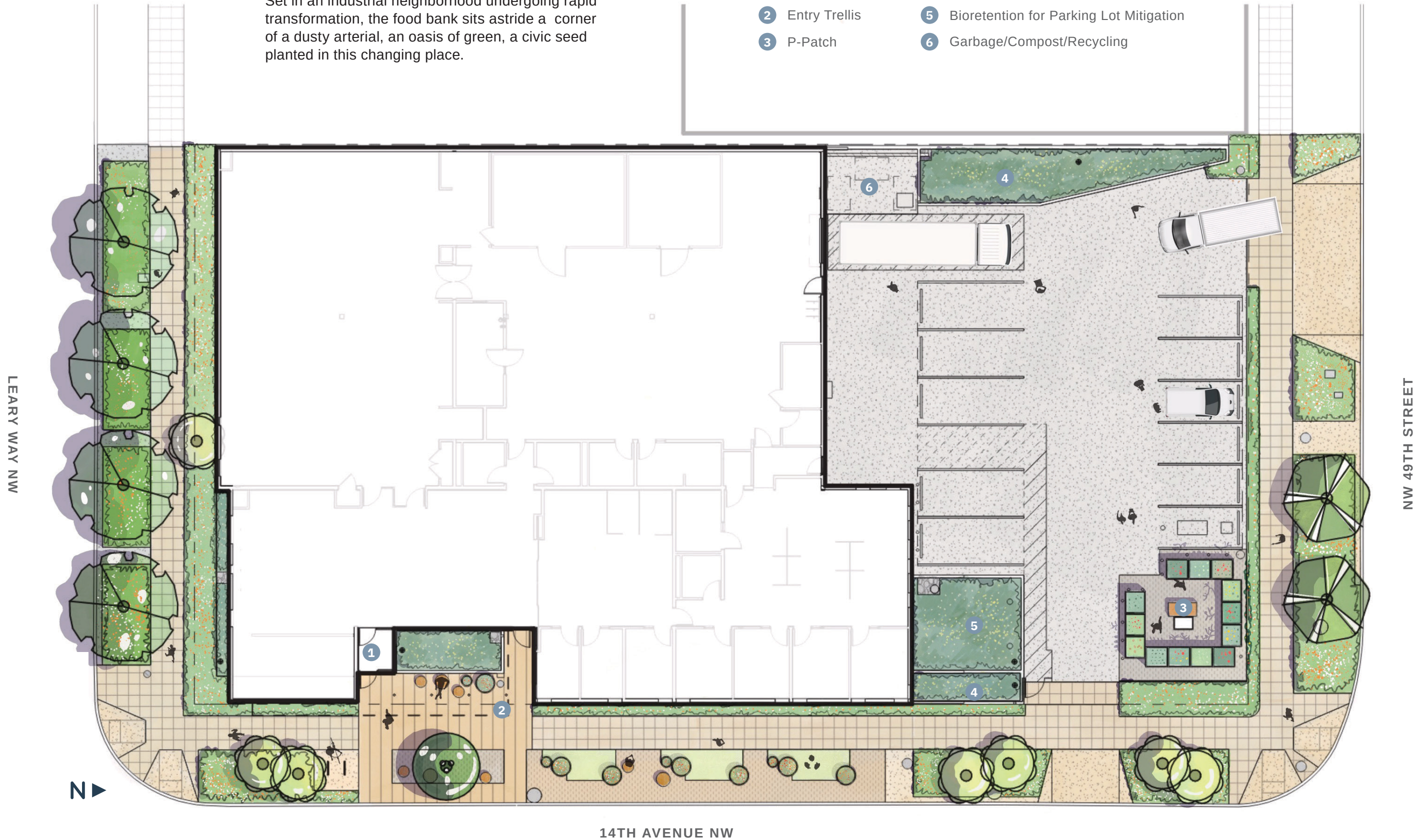
**A Purpose-full Landscape Approach**

The northern back-of-house area is a study in space planning.

### A Small Yet Mighty Space

Set in an industrial neighborhood undergoing rapid transformation, the food bank sits astride a corner of a dusty arterial, an oasis of green, a civic seed planted in this changing place.

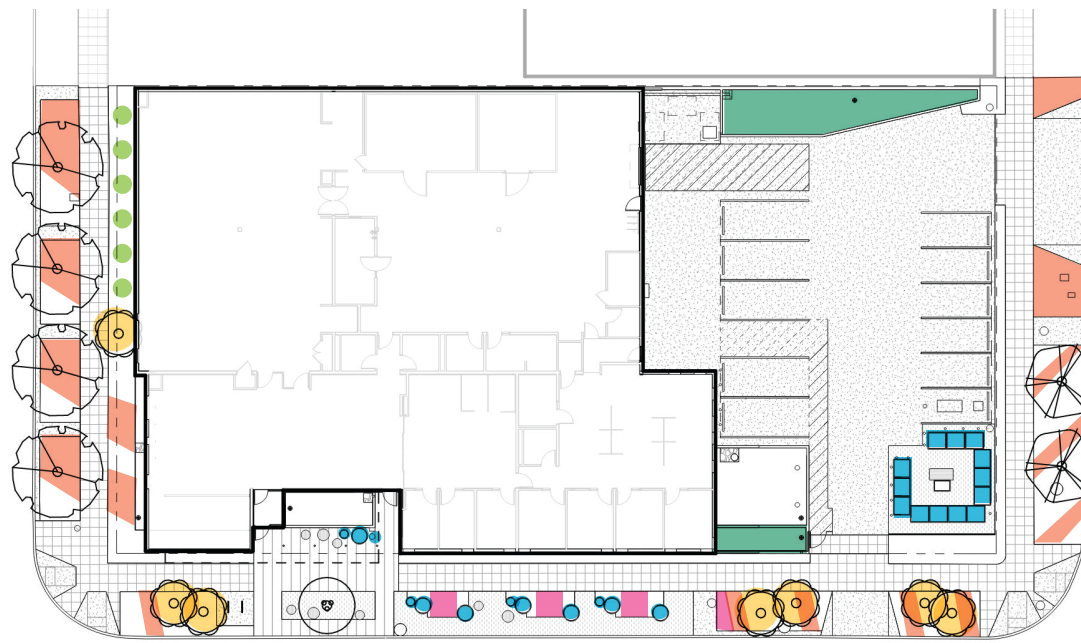
- 1 Public Entry
- 2 Entry Trellis
- 3 P-Patch
- 4 Blueberry and Hazelnut Bioretention
- 5 Bioretention for Parking Lot Mitigation
- 6 Garbage/Compost/Recycling





## Creating a Green Oasis

The planting design is an interweaving of three themes: Habitat, Harvest and Memory.



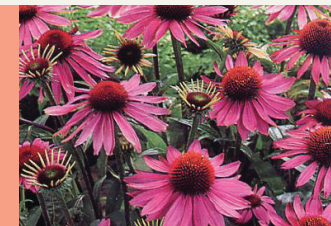
### HABITAT



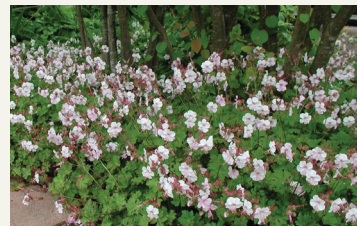
Amelanchier x grandiflora 'Autumn Brilliance'  
Autumn Brilliance Apple Serviceberry



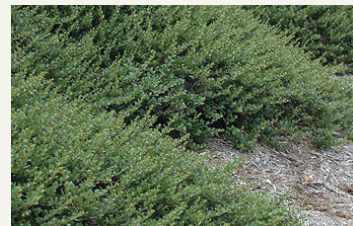
Mahonia x media 'Charity'  
Charity Mahonia



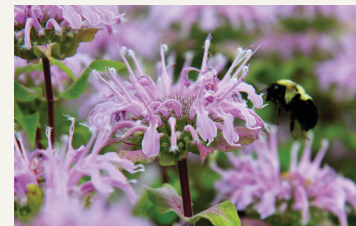
Echinacea purpurea  
'fatal attraction'



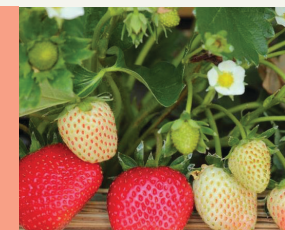
Geranium cantabrigiense 'biokovo'  
Hardy geranium



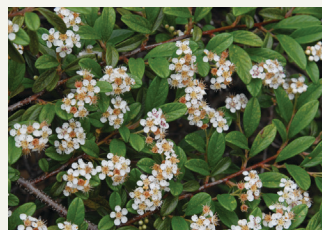
Ceanothus gloriosus  
Point Reyes ceanothus



Monarda fistulosa  
Bee balm



Fragaria chiloensis  
Sand strawberry



Cotoneaster dammeri  
Bearberry



Liatris spicata  
Blazing Star

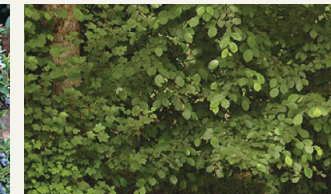


Asclepias incarnata  
Swamp Milkweed 'Cinderella' berry

### HARVEST



Vaccinium x 'sunshine blue'  
Sunshine blue blueberry



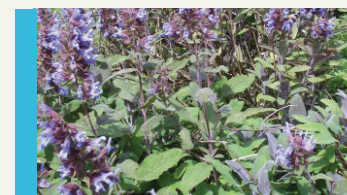
Corylus cornuta:  
Beaked Hazelnut



Thymus vulgaris  
Thyme



Foeniculum vulgare  
Fennel



Salvia officinalis  
Sage



Foeniculum vulgare  
Fennel



Mentha spicata  
Spearmint

### MEMORY



White Flower Carpet Rose

---

### Planting Seeds of Change

The design team worked leadership's idea of a memorial rose garden into a series of shrub roses into the right-of-way plant palette. The sturdy, long-blooming shrubs sharing the same vitality and spirit as the departed volunteers.





# Ballard Food Bank

---

## A Final Note

This project was memorable beyond its size or budget for asking the team to dream big and care! May our profession aspire to nourish the world the way this project feeds its community - with warmth and kindness.