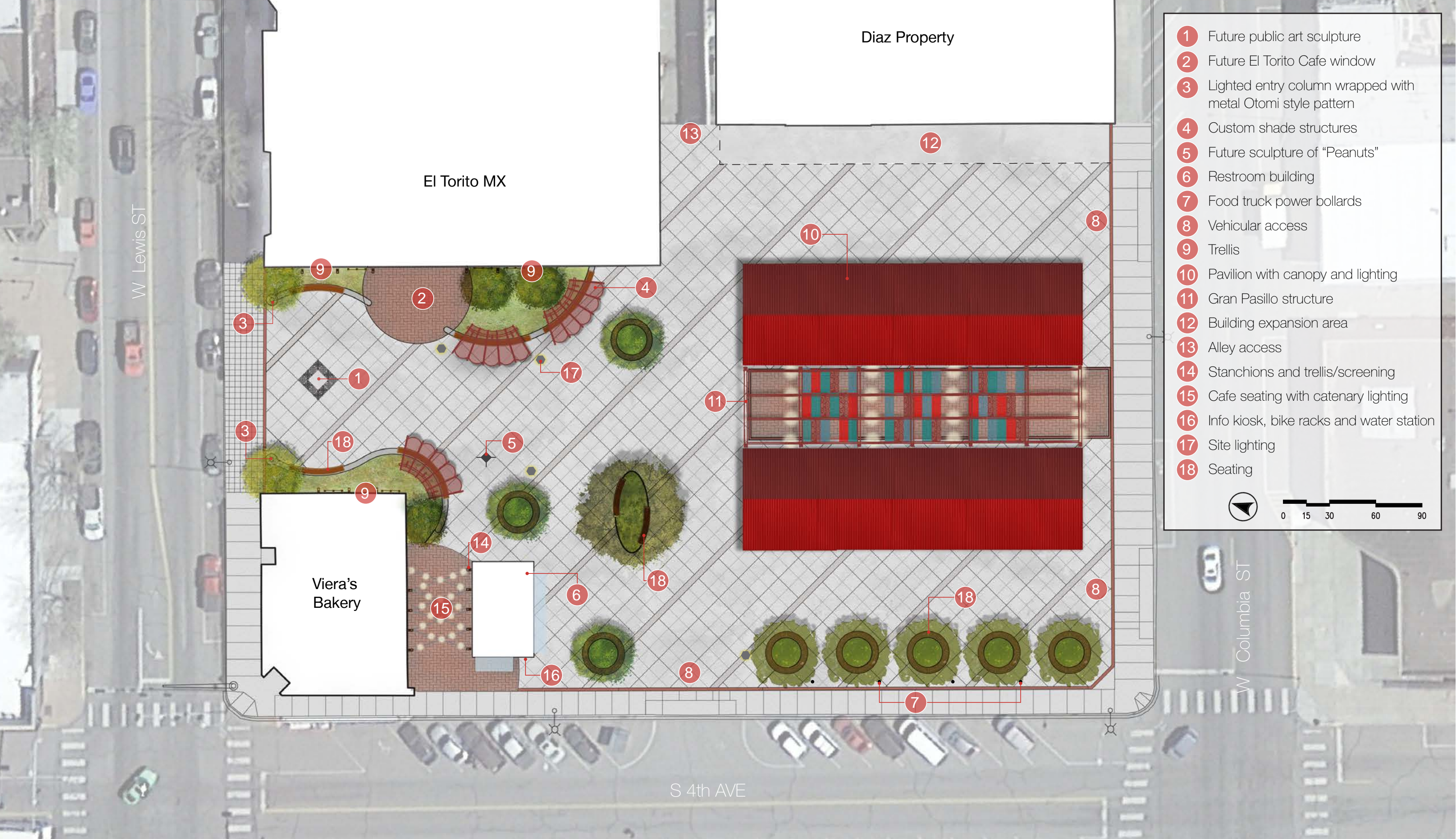




The new center structure “Gran Pasillo”, flanked by the refurbished pavilions house the weekly Farmers Market. These structures anchor the plaza providing a flex-use shelter for community events throughout the year, both large and small.



Diaz Property

El Torito MX

Viera's Bakery

S 4th AVE

W Lewis ST

W Columbia ST

- 1 Future public art sculpture
- 2 Future El Torito Cafe window
- 3 Lighted entry column wrapped with metal Otomi style pattern
- 4 Custom shade structures
- 5 Future sculpture of "Peanuts"
- 6 Restroom building
- 7 Food truck power bollards
- 8 Vehicular access
- 9 Trellis
- 10 Pavilion with canopy and lighting
- 11 Gran Pasillo structure
- 12 Building expansion area
- 13 Alley access
- 14 Stanchions and trellis/screening
- 15 Cafe seating with catenary lighting
- 16 Info kiosk, bike racks and water station
- 17 Site lighting
- 18 Seating



SITE PLAN: In the heart of downtown, the plaza layout allows for flexibility of the space for various programming opportunities, also providing more intimate spaces that are comfortable for daily use.



The project kicked off with a robust public and stakeholder engagement effort that strove to be inclusive with a variety of ways to solicit feedback, including materials prepared in both English and Spanish.



BEFORE: The existing pavilions were used for covered parking when not utilized for the Farmers Market. Although the pavilions provided much needed shade, they felt dated, dark and heavy.



The reinforced concrete pavement allows vendors to drive on-site for easy setup/breakdown. The open layout, with carefully placed seating nodes, allows for a variety of activation opportunities such as live music, food trucks, or even pony rides!



The new benches and planters provide respite areas for hungry food truck customers while they listen to live music and enjoy the sights and sounds of the Farmers Market.



The “Gran Pasillo” connects the space with the overhead structure donning shade panels inspired by papel picado festival flags, keeping a nice open-air feeling. The catenary lights and brick pavers reinforce the celebratory ambiance.



The plaza includes many great details that reflect the community's diverse culture and celebrates the region's history of agriculture which is fueled by 300 sun filled days a year.



The re-imagined pavilions provide shelter for the vendors and shoppers during a hot summer Farmers Market day. The paint colors were inspired by the colors of the produce commonly found at the market.



The new restroom building provides accessible, gender neutral restrooms with locking mechanisms, easy for City staff to manage. On-site storage allows for easy maintenance of the plaza. Solar panels are attached to the canopy to power the building.



The planters provide ample rooting space supporting healthy mature trees with large canopies in the future. The plantings are low maintenance and have low watering needs, while providing year-round interest. Electric bollards provide power for food truck use.



The City and design team worked closely with adjacent property owners to help ease impacts during construction. The team also coordinated with the businesses to provide facade repairs and improvements, including new stucco and paint, signage and screening.



Custom shade structures provide instant shade on site where existing trees weren't able to be retained. The papel picado inspired pattern was used to provide a "leafy" shade canopy.



The property at the southeast corner of the park coordinated future expansion into the plaza space with outdoor seating and deck space, further activating the park. This is a photo-simulation that helped communicate what that relationship could look like.



The park is being enjoyed by the community and visitors alike, and was even been given a “thumbs up” by the local Gaucho!