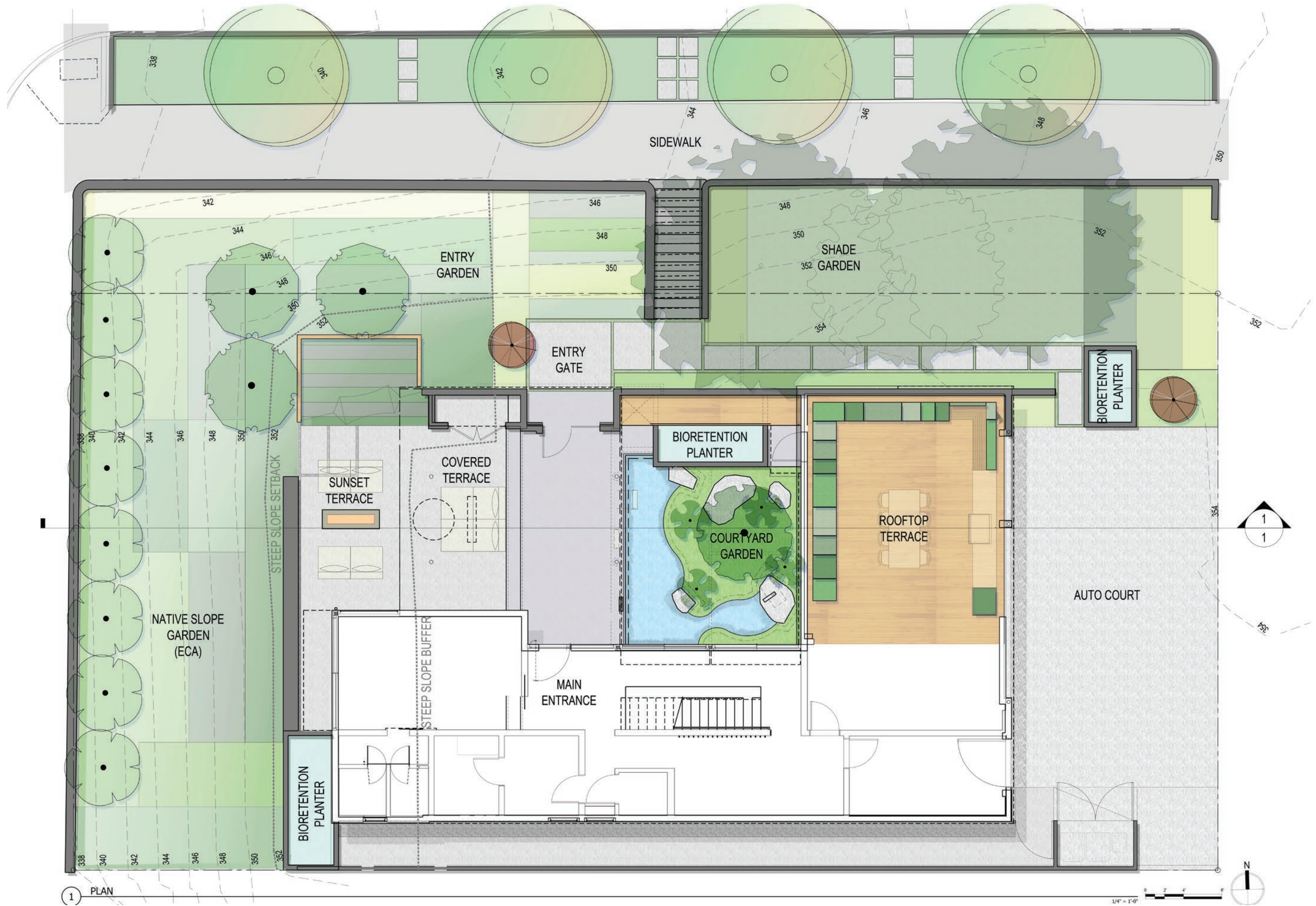




THE PERCH

This Seattle garden features four distinct garden rooms including a hillside garden and critical area slope restored with Pacific Northwest plants. With commanding views westward, garden rooms are designed to take advantage of Puget Sound and Olympic Mountain range views.



THE PERCH PLAN

Four distinct outdoor spaces create opportunities for enjoying views and the outdoors.



THE PERCH SECTION

The section reveals the sloped site, the various garden rooms and the street/sidewalk plantings.



THE PERCH

The net zero home features a deck-top roof dining area accessible from the second floor with planted flower and vegetable beds. The calming entry courtyard includes a water feature with bubbling core-drilled boulder and pool.



QUALITY OF DESIGN

The modern garden suits the architecture of the home. Modest, straightforward materials and high quality finishes, contrasting plantings, and attention to small details result in cohesive garden.



QUALITY OF DESIGN

Plantings in the private courtyard garden feature a lush covering of baby's breath, soft shield ferns, and mayapple. Hand-selected boulders and a specimen maple tree express the designer's intention for a serene space.



QUALITY OF DESIGN

Massings of native and ornamental plants create a graphic effect on the landscape. Contrasting plants create large swaths of color and texture and a modern garden effect.



DESIGN EXECUTION

Elements, materials, and colors create contrast and interest. The simplicity of the composition – together with the palette of refined materials – allows major site elements to transform in intriguing ways: wooden benches become walkways, curbs turn into walls, terraces into islands.



DESIGN CONTEXT

The home and its garden perch on a high corner site. The planting design screens views and safely restores an environmentally critical area in an aesthetically pleasing fashion, appropriate for the modern home.



ENVIRONMENTAL SENSITIVITY

Three bioretention planters treat stormwater. The design embraces the entry courtyard bioretention planter; integrating it into the garden by artfully planting it and treating it as a garden feature with its adjacency to the water feature.



SUSTAINABILITY

Preservation of existing trees and site retaining walls lessened construction impacts. After removal of English ivy, the ECA section of the slope was planted with Pacific Northwest native plants. A mix of ornamental plants completes the block style planting.



ENVIRONMENTAL SUSTAINABILITY

The rooftop deck feature lightweight custom aluminum steel planters with built-in seating. The beds are filled with vegetables and pollinator flowers. Hemlock trees retained on the northern edge create a forest-like effect in the urban environs.



DESIGN VALUE

Custom swings provide fun and whimsy in the private entry courtyard.



DESIGN VALUE

The courtyard garden tells the Puget Sound story, serving as a metaphor for our Northwest geography of green, sea, and mountains. Birds have adopted the garden as a place of refuge and habitat, too.



DESIGN VALUE

A hedge of *Ribes sanguineum* provides privacy screening on the fire terrace. The seating area with its modernistic plantings offers space for enjoying the view.