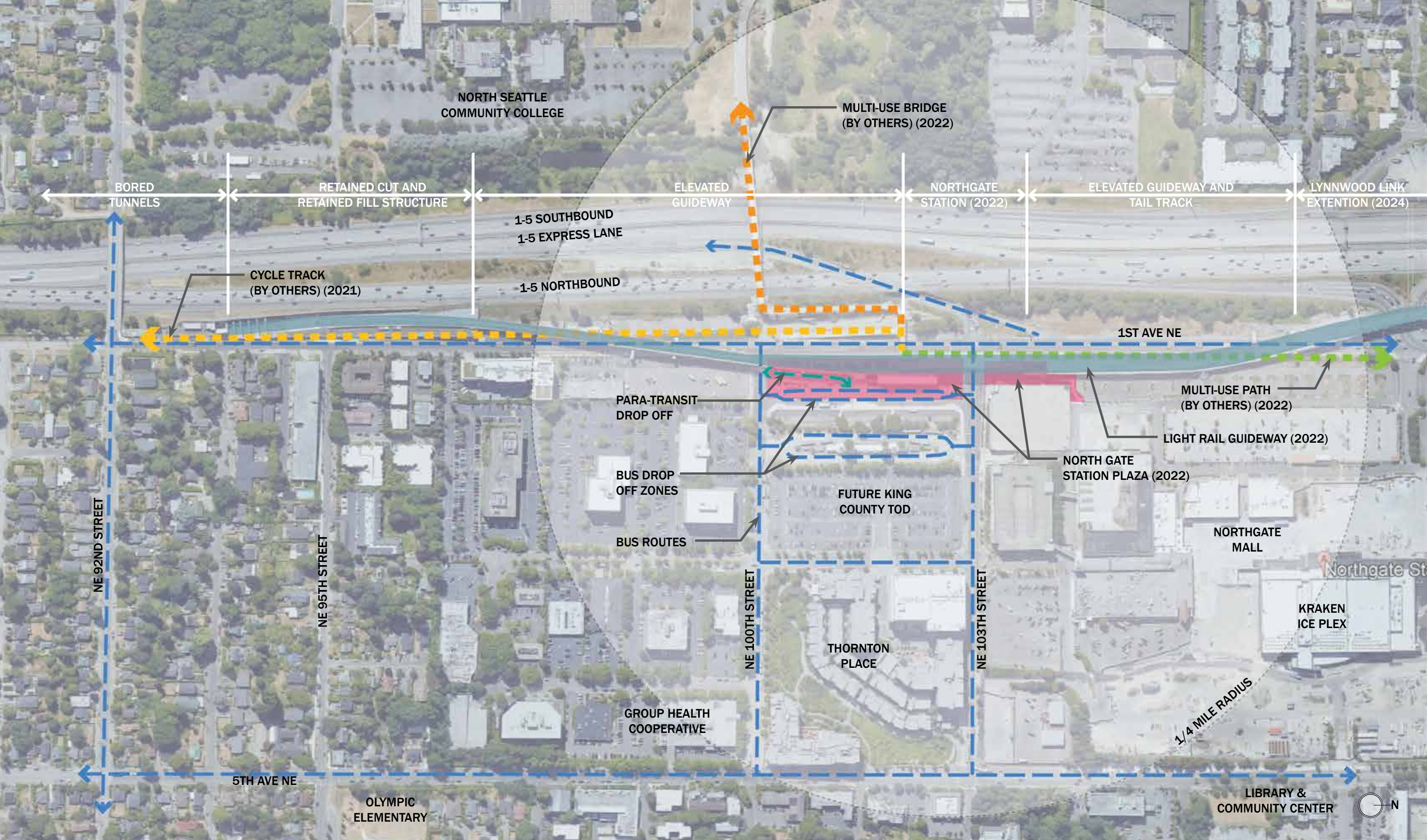




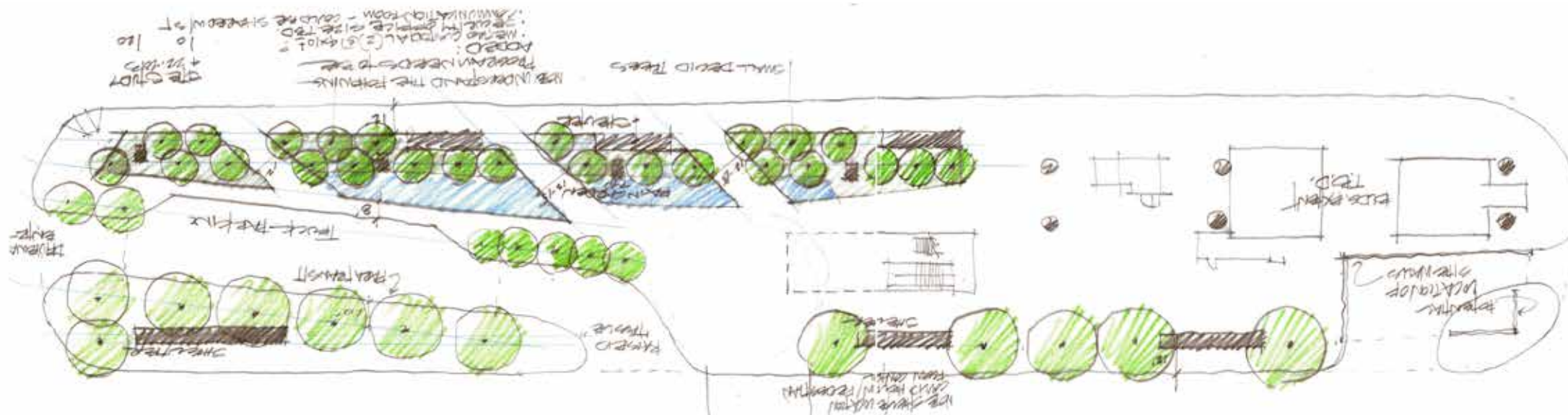
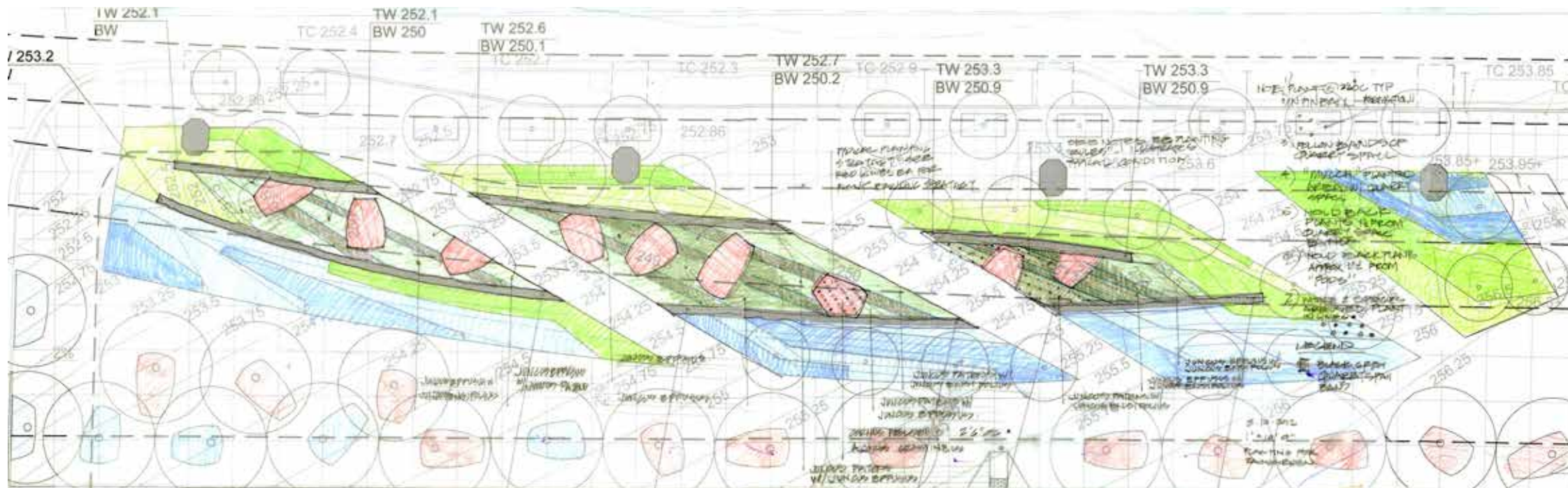
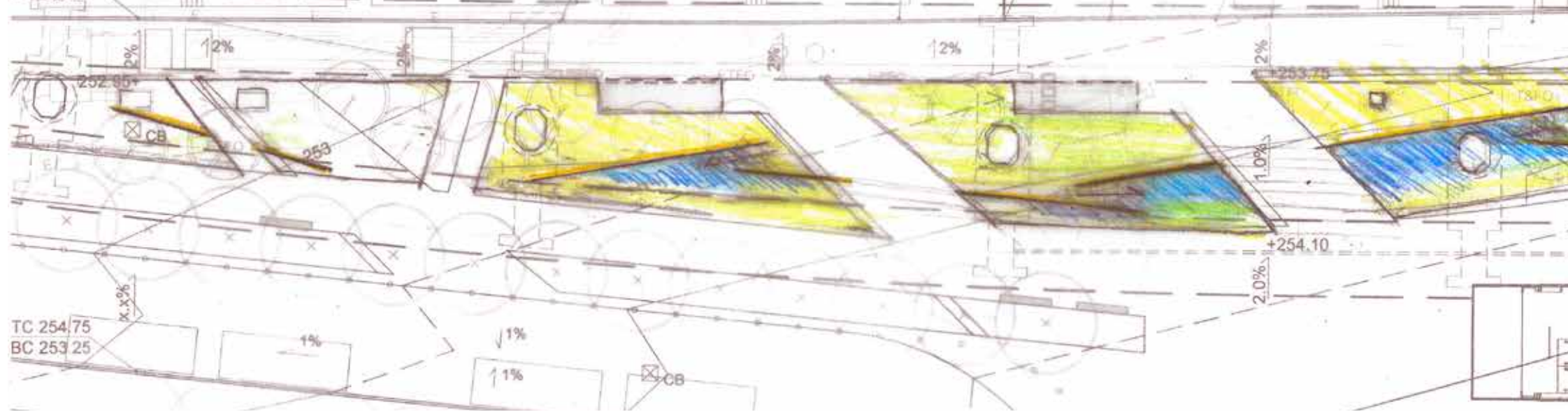
The Northgate Station light rail site is located in a rapidly developing urban village. A district adjacent to the I-5 corridor, along the expanding light rail network that includes the King County Metro bus transit center, and the redeveloping Northgate shopping mall and Kraken Community Iceplex.





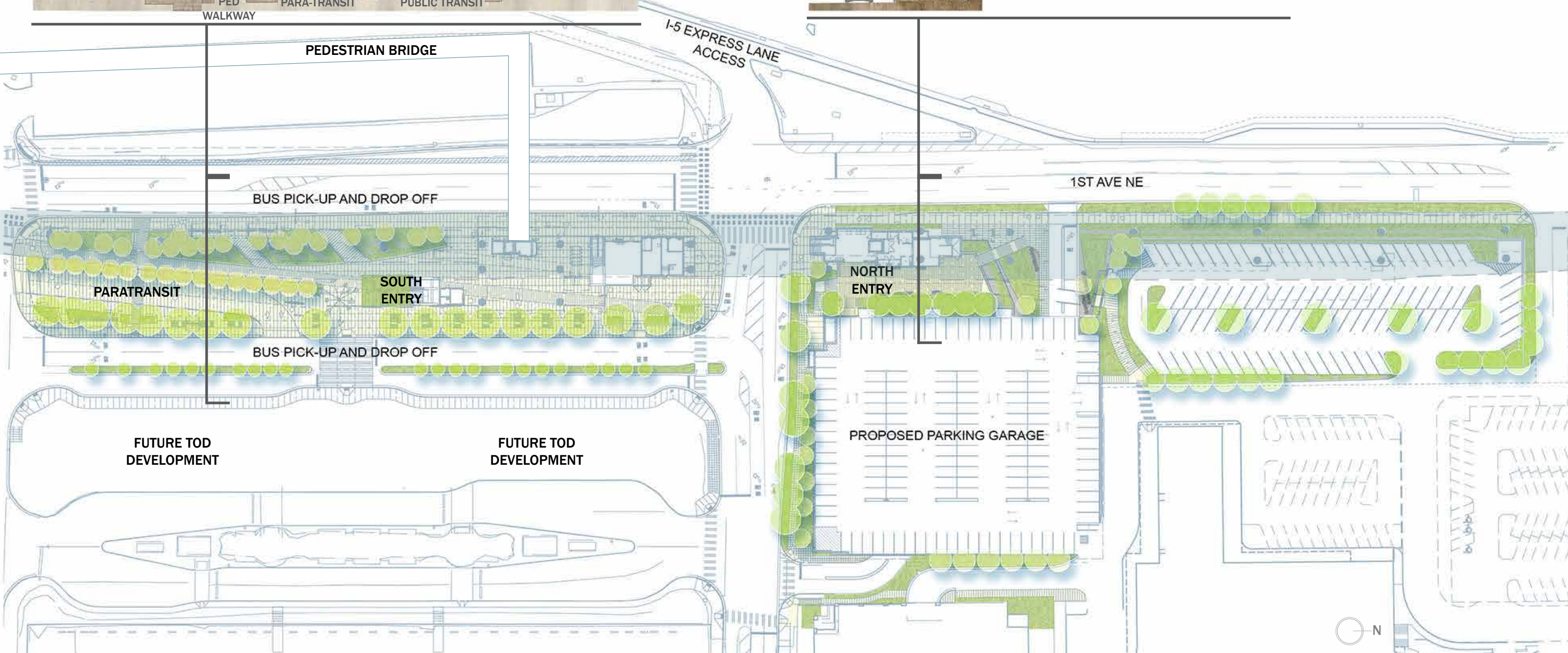
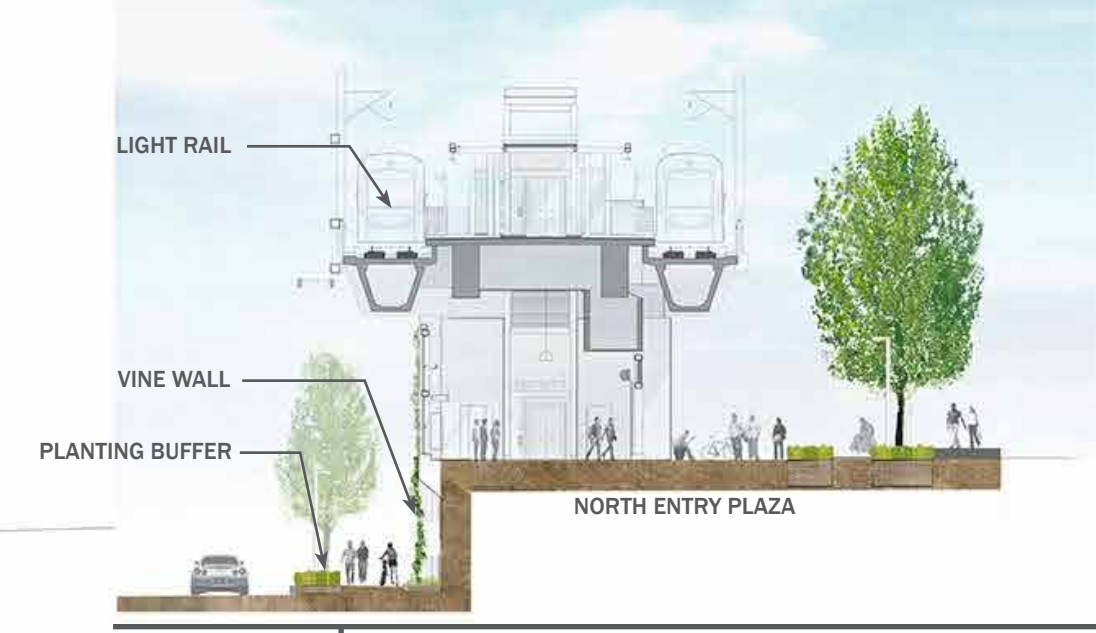
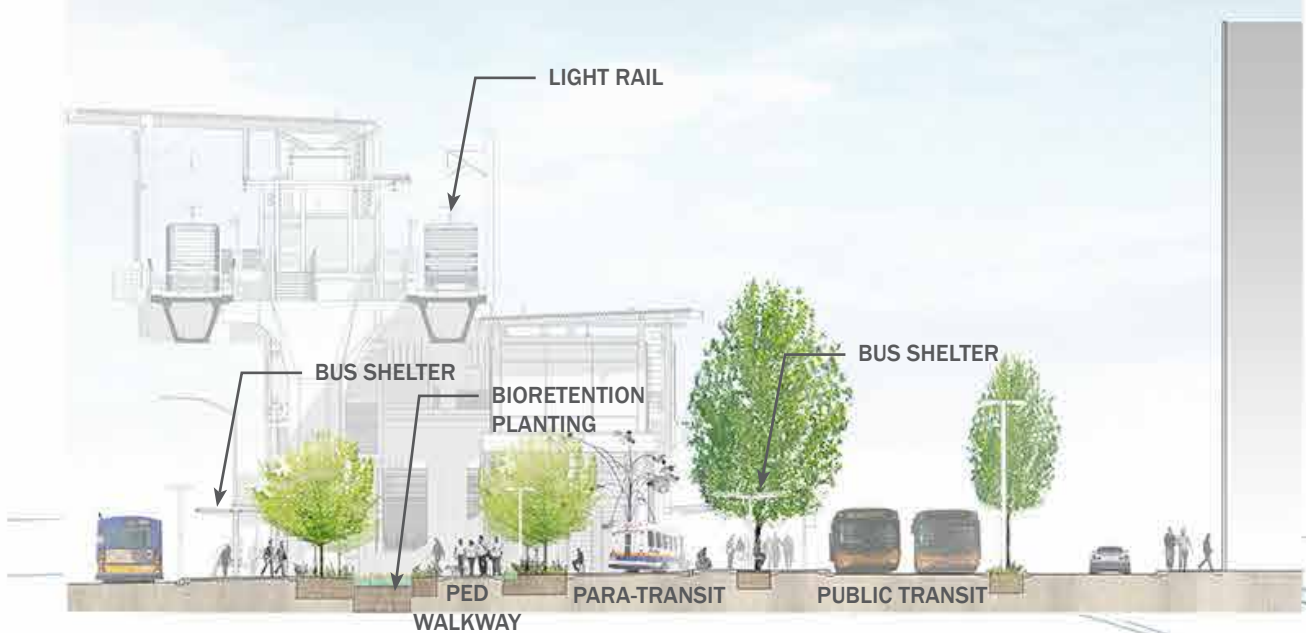
The 2-acre site is an intermodal transit node where pedestrians, cyclists, and bus commuters converge, circulate, and interact along their daily travels. The station is a hub for present and future connections to surrounding neighborhoods.





The elegant station plaza design draws inspiration from the nearby historic Thornton Creek. Stormwater collection and celebration is central to the site morphology. Planting is layered to be lush and visually striking, with trees to bring the plaza spaces to the human scale with the concrete guideway above.





The station plaza design considers multiple levels and connections to on- and off-site programs. Clear, intuitive connections between spaces and station levels is achieved through appropriately scaled planting and pavement areas that accommodate various speeds of pedestrian and bike travel.





The overhead train platform is connected to the bus loops below. The scale of the stormwater and other planting areas matches the scale of the overhead infrastructure, harmonizing the two and balancing the visual weight of the systems. A green roof reduces the urban heat island effect and provides another layer of vegetation between the guideway and the street.





Transit patrons get up close with the changing colors and textures of vegetation through the seasons. This 'shoulder' of vegetation helps to define plaza pathways at the human scale.





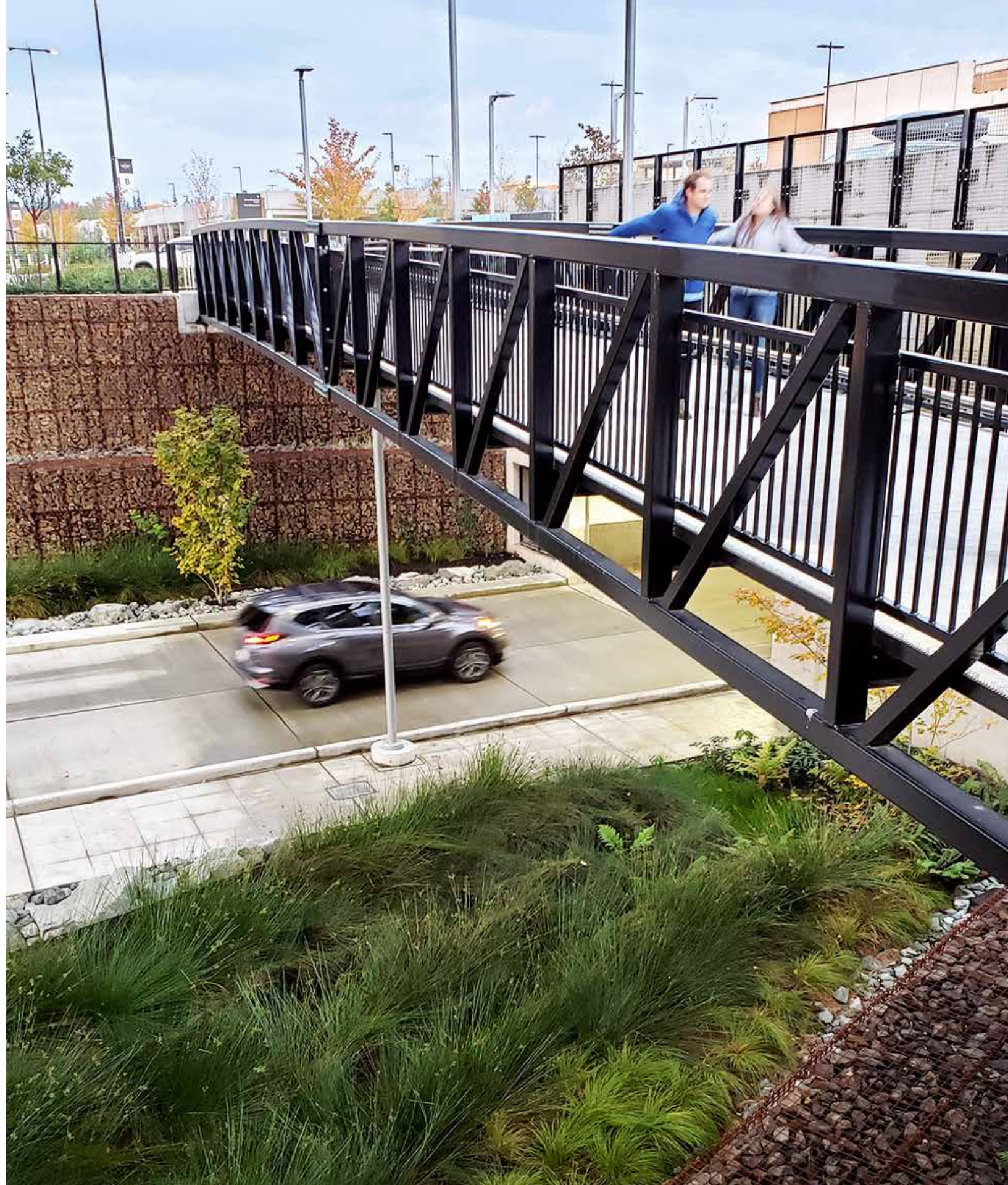
Bridges span the stormwater retention areas that match the scale of the guideway infrastructure. The generous pathways provide ample space for peak traffic, while also feeling protected and allowing people to stop and look over the rain gardens.





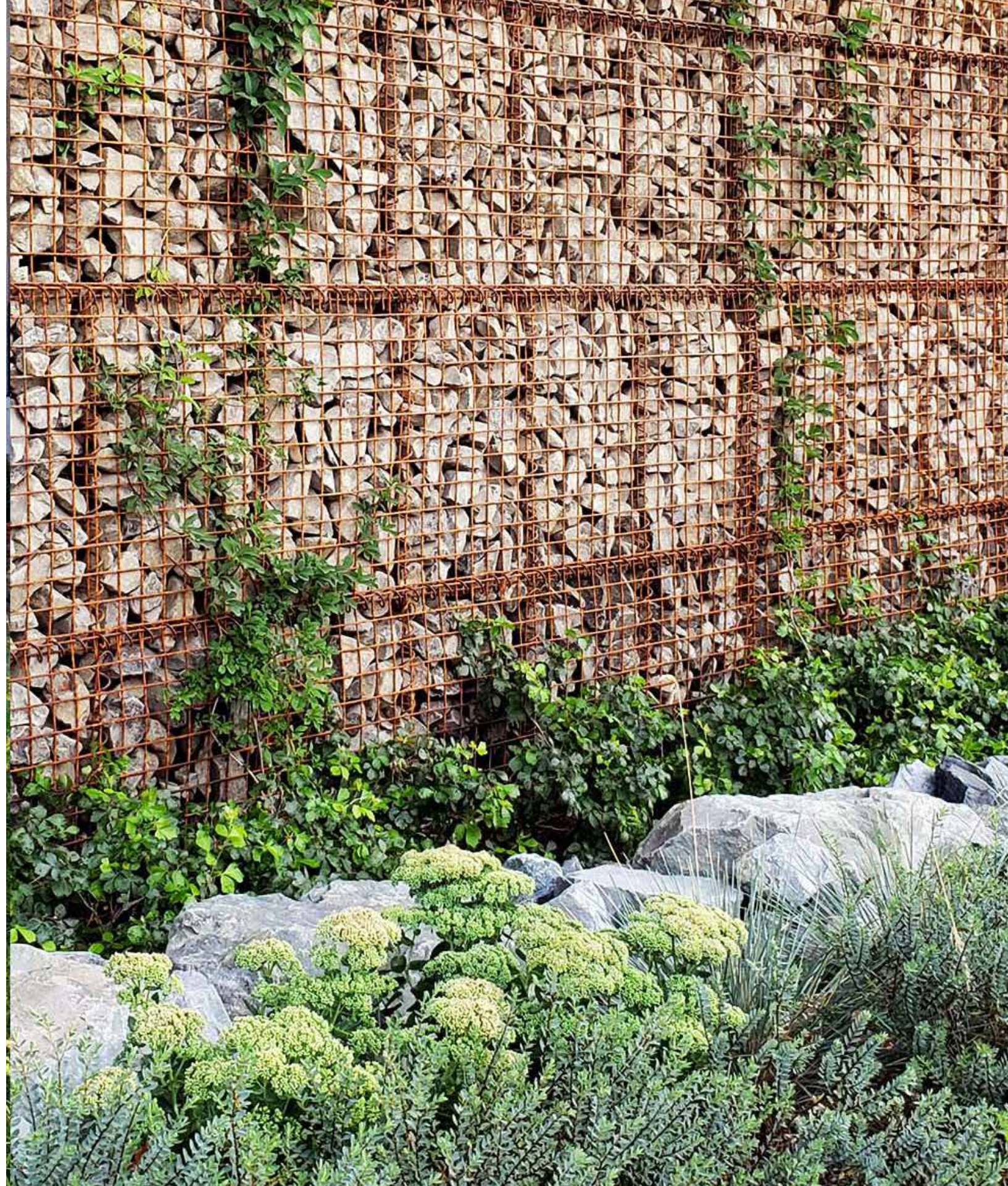
Pavement banding helps scale lengthy corridors and adds interest to the ground plane. Planting is layered to provide a greater sense of depth, while also remaining open for sightlines in and through the spaces.





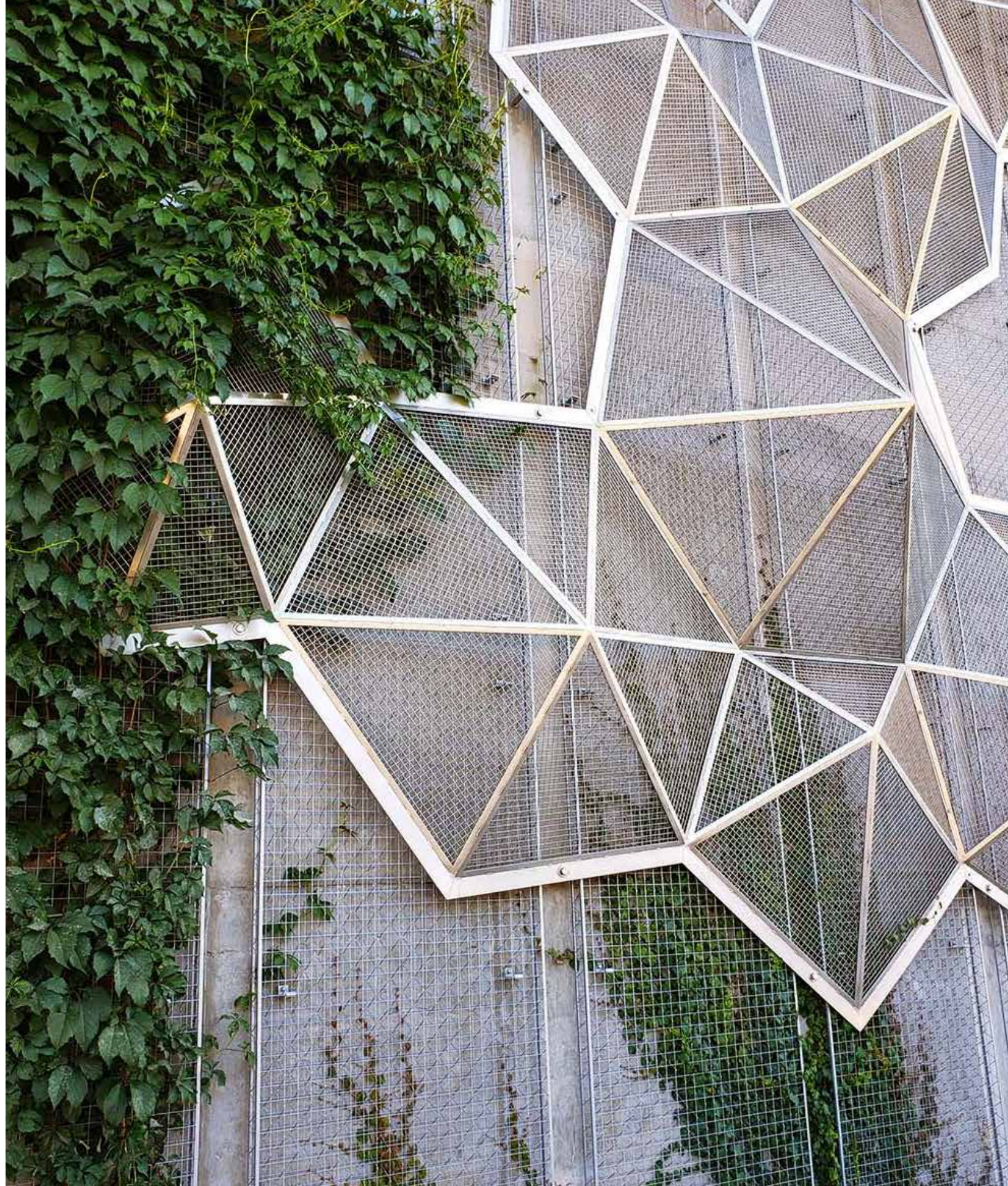
A bridge connects the plaza site north, providing a pleasant pedestrian experience. Below, stormwater is collected in lush areas, framed by strong and textured gabion walls that provide material and visual connection to the larger site features.





The gabions add texture and color to the space, while supporting the growth of vines. Planting is layered in front of the gabions to create a rich collection of textures and colors along the pedestrian and bike corridor.





Public art installed on the walls mingles with the trellis to create unique geometry. Vines fill in the spaces and enliven the surface.





Trees, shrubs, and vines soften the pedestrian experience and place the guideway into context.





The late afternoon light turns the transit guideways above into a sundial, with shadows marking the passing of time as riders come and go. The dense grasses blowing in the breeze gives some life along the central corridor and evergreen vegetation covering the warm colored gabion walls root the station in this place.