

LEGEND

- CITY OWNED PROPERTY
- CENTRAL BUSINESS DISTRICT
- PARKS
 - A RAMALEY PARK
 - B FLINTSTONE PARK
 - C SMITH PARK
 - D CORNER PARK
- ... WATERFRONT TRAIL
- ~ NORH PARK COMMERCIAL REDEVELOPMENT

PARK BY NUMBERS

- 28.5 Acres
- 2,100 Oak Harbor Waterfront Trail
- 2 Playgrounds
- 3 Little League Fields
- 1 Basketball Courts
- 2 Restrooms
- 3 Kitchens



Building Connections

Windjammer Park, sits like a jewel along Oak Harbor's waterfront. It links to surrounding parks and the City's Central Business District, bringing economic vitality to downtown businesses and complementary public amenities with recreational opportunities for all to enjoy.

Windjammer Site Plan

The Park ties together and reflects the local area's natural elements through its numerous interpretive, imaginative, and functional design elements.

PARK BY NUMBERS

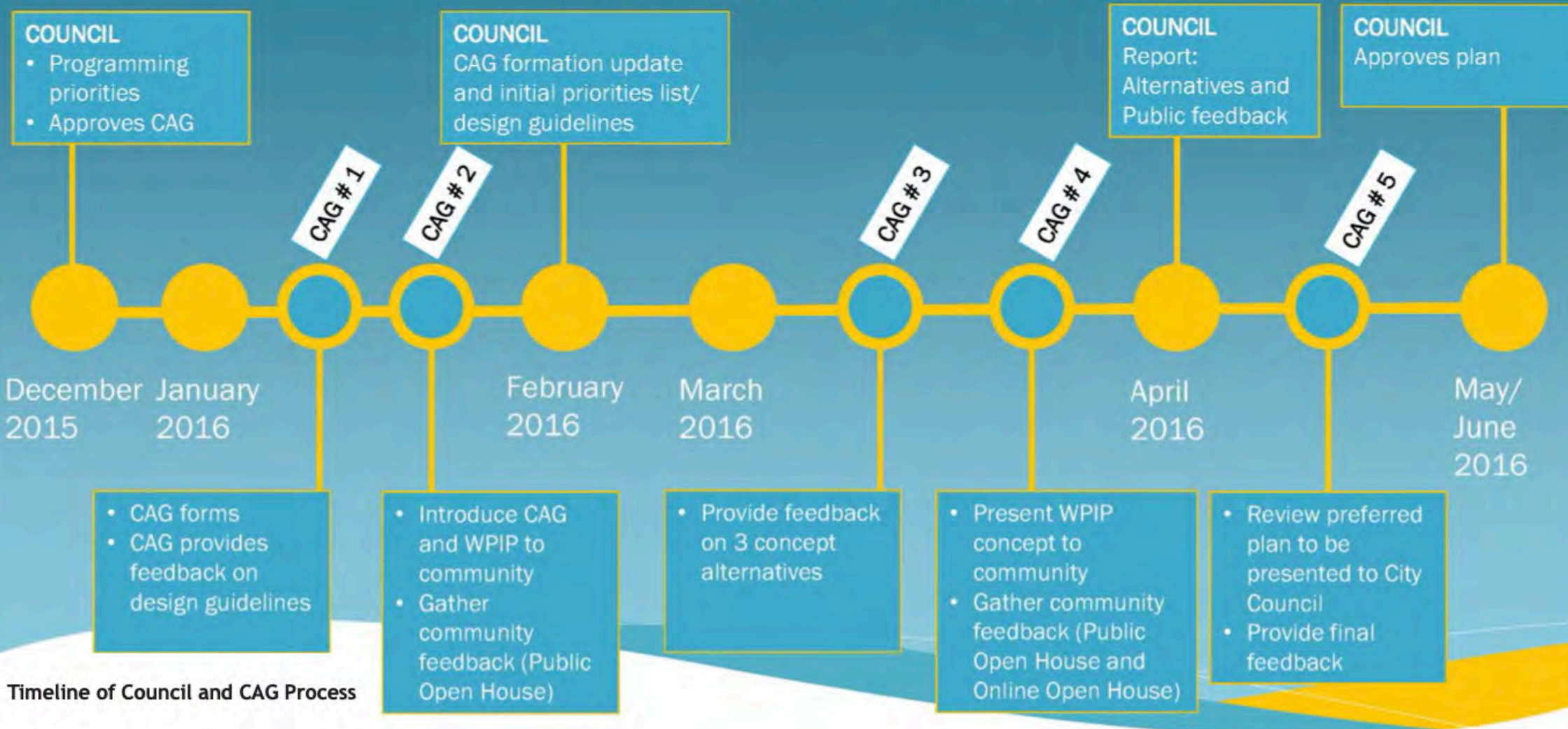
ACRES	~28.5	STAGE	2
WATERFRONT TRAIL	~2,315 feet	KITCHEN	3
PLAYGROUNDS	3	BATHROOM	3
HARD COURTS	2	PARKING SPACES	225
EVENTS SPACE	2	SHELTERS	5
MULTI-USE LAWN	~6.5 acres	WINDSHELTERS	6



PROPOSED PARK ELEMENTS

A SPLASH PARK	G PLAYGROUNDS	M RESTROOM
B RENOVATED LAGOON	H LANDSCAPE AND GARDENS	N WINDSHELTER
C EVENTS PLAZA	I BEACH ACCESS	O NATURE WALK
D STAGE/AMPHITHEATER	J GATEWAY ENTRANCE	P WETLAND ENHANCEMENT
E WATERFRONT TRAIL	K PARKING	Q KAYAK CAMPGROUND
F MULTI-USE LAWN	L KITCHENS	R NON MOTORIZED BOAT LAUNCH

Council and CAG Process



Interactive Feedback Loop

The quality of design was enhanced through a collaborative community-driven process, resulting in a built project with an array of elements that benefit the environment, are sustainable, and provide value to the community and its residents.



INTERPRETIVE CENTER

Coming in
2020

Coming in
2020

Coming in
2020

Coming in
2020

Coming in
2020

Coming in
2020

Coming in
2020

Coming in
2020

Coming in
2020

Coming in
2020

Coming in
2020

Coming in
2020

Coming in
2020

Coming in
2020

Coming in
2020

Coming in
2020

Coming in
2020

Coming in
2020

Coming in
2020

Coming in
2020

Coming in
2020

Coming in
2020

Coming in
2020

CITY OF
Oak Harbor
CLEAN WATER FACILITY

A Library-Quality Clean Water Facility

This \$125 million project showcases how environmentally sustainable and aesthetically pleasing public works projects can be integrated with stunning and effective landscape designs that benefit communities for years to come.



A Contemplative Landscape
Parks serve as our common space where we can equitably gather and recreate. Windjammer Park contains gardens, natural areas, and wetlands. There are two formal gardens in the park that serve as community gardens or contemplative spaces.



An Integrated Site

The CWF includes an events plaza and pavilion. Windjammer Park includes community kitchens, wind screens, restrooms, a state of the art splash park, walking and biking trails, playgrounds, multi-use fields, a boardwalk, a dune-scape oceanfront, and waterfront access.



Window Gazing

The CWF serves as an interpretive center with strategically placed viewing windows along its perimeter allowing children and passersby to see the plant at work. The boardwalk provides a dramatic view of the harbor to the north.



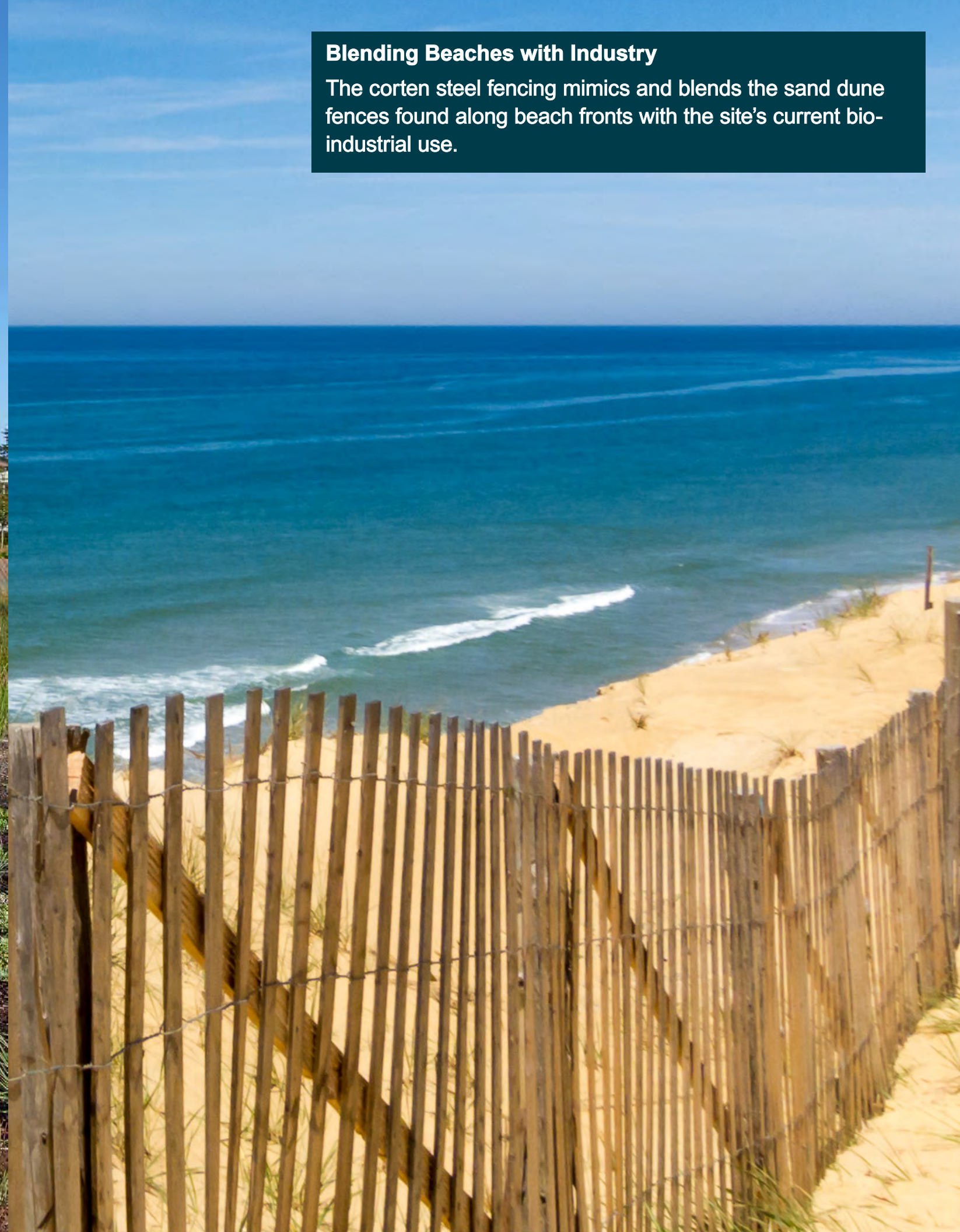
A Boardwalk Connector

The scored concrete Santa-Monica like boardwalk traverses north and south between the CWF and Oak Harbor. This elegant feature provides passersby accessibility to the CWF and connects the harbor with downtown.



Blending Beaches with Industry

The corten steel fencing mimics and blends the sand dune fences found along beach fronts with the site's current bio-industrial use.



Design Elements that Reflect the Project's History

Industrial design and natural landscaping elements connect the site's history and surroundings. Rain gardens serve as a sustainable and pleasing stormwater detention feature.





Interpretive Easter-Egg Elements

The Splash Park incorporates interpretive Easter-egg like impressions, such as starfish and other sea creatures. Children of all ages can find these hidden gems and learn about sea life and their environmental benefits.



Design Elements

Windjammer Park includes two kitchen areas, a performance pavilion, playgrounds and multi-use fields, a swimming lagoon, improved walking and biking trails, a Santa Monica-like boardwalk, wind shelters, a dune-scape oceanfront, and waterfront access.





Children and Families at Play
Climbing and playground features are intermixed with sprawling lawns, views, and open areas that invite families to visit and enjoy.



Performance Pavilion
An aesthetically designed Performance Pavilion is situated around sprawling lawns, wide walkways, recreational courts, and beautiful vistas that invite multi-generational use and enjoyment.



A Beneficial Connection

From clean water to beaches, baseball, and businesses, Windjammer Park creates an environmentally and economically sustainable community connection.