

Vancouver Waterfront Redevelopment Site Plan
As part of the larger Vancouver Redevelopment Project, the Vancouver Landing Project includes plazas, seating areas, boardwalks, stormwater gardens, connecting trails, and interpretive elements that link to the site's history

Downtown
Vancouver

Vancouver Columbia
Riverfront Waterfront
Redevelopment Project
(40 acres)

Vancouver Landing
Redevelopment
Project

Terminal 1 Project
(10.7 acres)

AC
Marriott

Columbia River

I-5 Bridge Connecting
Washington and Oregon





Mixed-Use Development

AC Marriott Vancouver Waterfront Hotel

Future Link to Downtown Vancouver

Future Market Building

Rotary Way

Renaissance Trail

Columbia River

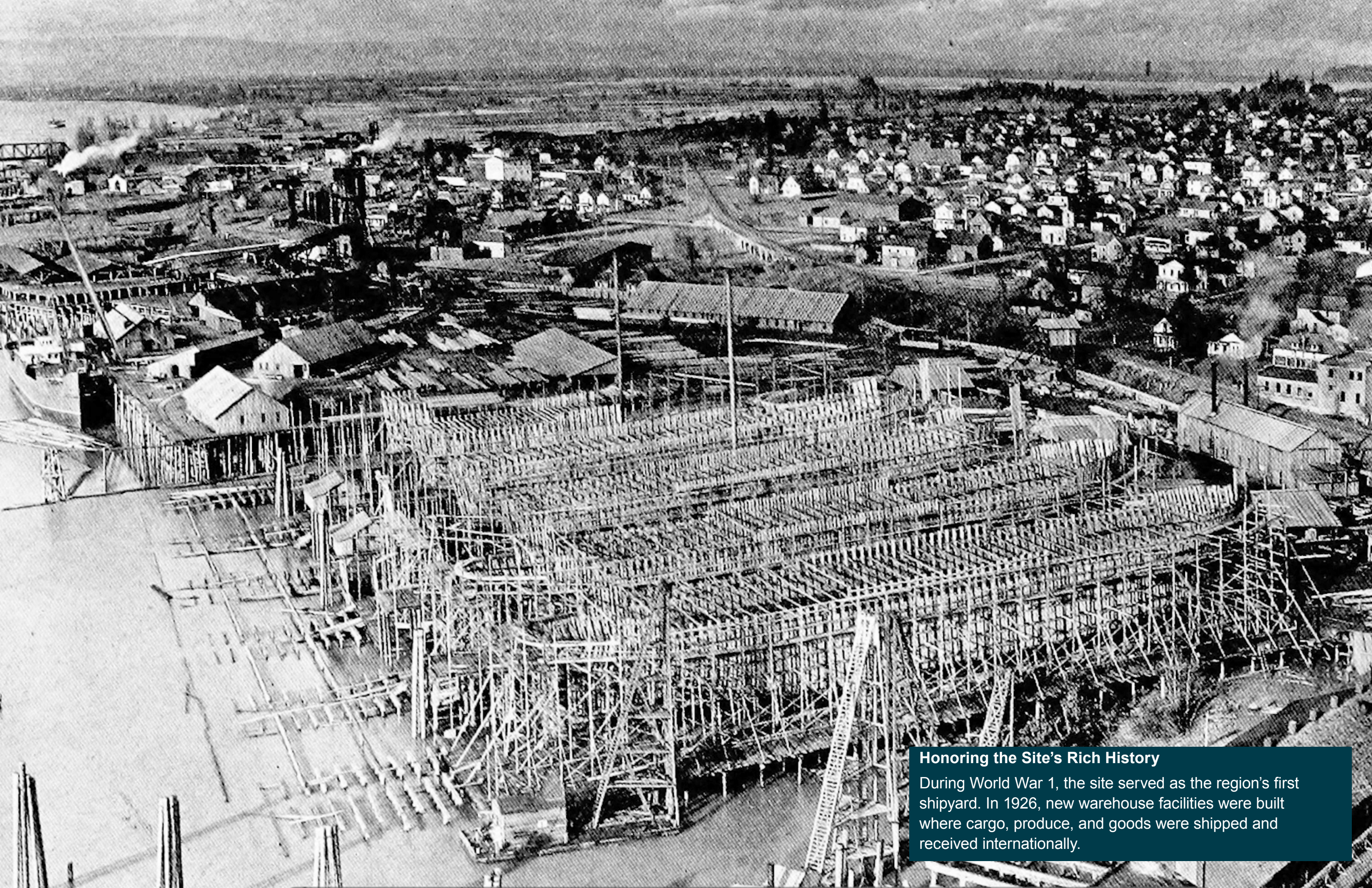
New Amphitheater Area

Water Access Pier



The Vancouver Landing Site Plan

In the midst of Vancouver's Waterfront Redevelopment Project, this site serves as a place to land or disembark. It provides visitors visual and physical access to the river and connects to other amenities and downtown.



Honoring the Site's Rich History

During World War 1, the site served as the region's first shipyard. In 1926, new warehouse facilities were built where cargo, produce, and goods were shipped and received internationally.



An Existing Derelict and Abandoned Site
In the 1970s, a seldom-used, concrete amphitheater for boaters was built. The facility faced southwest, had no protection from the sun, and turned its back on the Vancouver community.



Creating the Vision

Our virtual reality images helped officials and the public imagine what these spaces could someday become. Based on our extensive outreach process, the Washington State Legislature awarded the project significant funding.



Reimagining the Amphitheater

The new amphitheater invites visitors into a lush and flourishing site that provides shade and spaces for gathering, while linking the area with the Columbia River and surrounding amenities.



Renaissance Trail

Vancouver Landing

Connecting the Waterfront with Downtown

The Renaissance Trail serves as a pedestrian and bicycle connector to other amenities along Vancouver's redeveloped waterfront and the city's downtown core.



Virtual Images of the Public Market
Showcasing projects throughout the redevelopment area helps the public envision the entirety of the Vancouver Waterfront Redevelopment Project's potential.



Making The Vision A Reality
The initial phase included seismic and structural pier upgrades, and structure modifications to allow for a new accessible route, a bulkhead, and additional pilings to support the weight of seating, decking, soil, and site amenities.



Complexity at the Core

Given strict weight parameters, designers used large blocks of foam to build volume under areas that were eventually covered with gardens, stairways, and boardwalks.



Renaissance Trail

Rotary Way

Vancouver Landing

Terminal 1
The initial phases of development began with design and permitting in 2019 and the construction of Rotary Way, the site's first connection to the Renaissance Trail along the upper Columbia riverbank.



Evoking History

Rotary Way incorporates boardwalk paths, terraced seating elements, and stacked timbers reminding visitors of the site's history of shipping lumber around the world.

A Visual History In Writing

A regional history timeline etched along the boardwalk reveals itself as people stroll along the walkway in both directions. The timeline celebrates significant cultural and natural historical events.



1926 Terminal 1 port facilities open



Bringing Community Together

The project emphasizes visual and physical connections to the river, and new amenity spaces on the waterfront to support new buildings, streetscape, and pedestrian connections.



Environmental Sensitivity and Sustainability

Our commitment to sustainability resulted in a built project with green roofs and infrastructure, habitat restoration, water harvesting, efficient irrigation, and a LEED Neighborhood Development Gold certification.