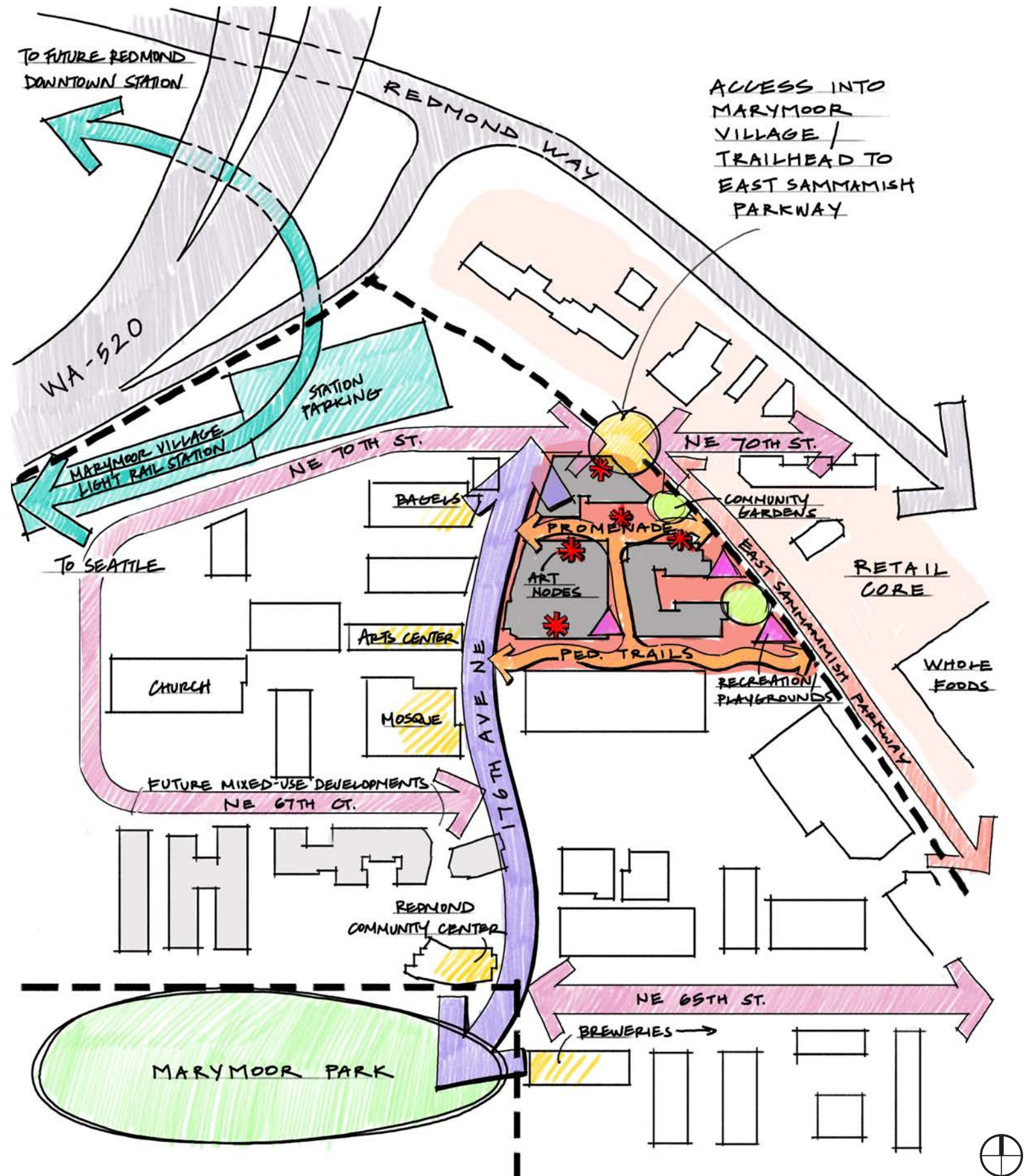


### Context

Spectra serves as a gateway into the emerging Marymoor Village in Redmond, Washington. Directly adjacent to a new light rail station, vibrant retail, and the East Lake Sammamish Parkway, the project sets the tone for a neighborhood in high demand for quality pedestrian spaces and connectivity.





Overall site plan of the Spectra Marymoor development, which included three distinct buildings interwoven with public and private amenities and trail connections.

### Key

- a** central promenade
- b** pedestrian walkway
- c** pool recreation courtyard
- d** community gardens
- e** public art elements
- f** early learning playgrounds
- g** east amenity courtyard
- h** west private courtyard
- i** west roof deck
- j** private patio terraces
- k** live-work entries
- l** pet lawn
- m** retail deck
- n** trail connection
- o** rain gardens





The popular east-west promenade creates a mixing environment for cyclists, pedestrians, residents and gardeners alike.



Drone photography reveals the relationship between the promenade, pool lounge and community garden and shows the variety of use zones packed into the street level.



The area that includes the sculpture “Alignment” by Perri Lynch Howard and Craig Howard and the surrounding wood seating platforms is the jewel of the east-west promenade and lies at the nexus of the promenade and the north-south pedestrian spine.



The west entrance of the promenade has soft grassy plantings and pedestrian lighting that support a multi-modal parkway with a protected bike lane and trail that connects to Marymoor Park. Hand-painted murals by Addison Karl affirm Spectra as an Arts District hub.

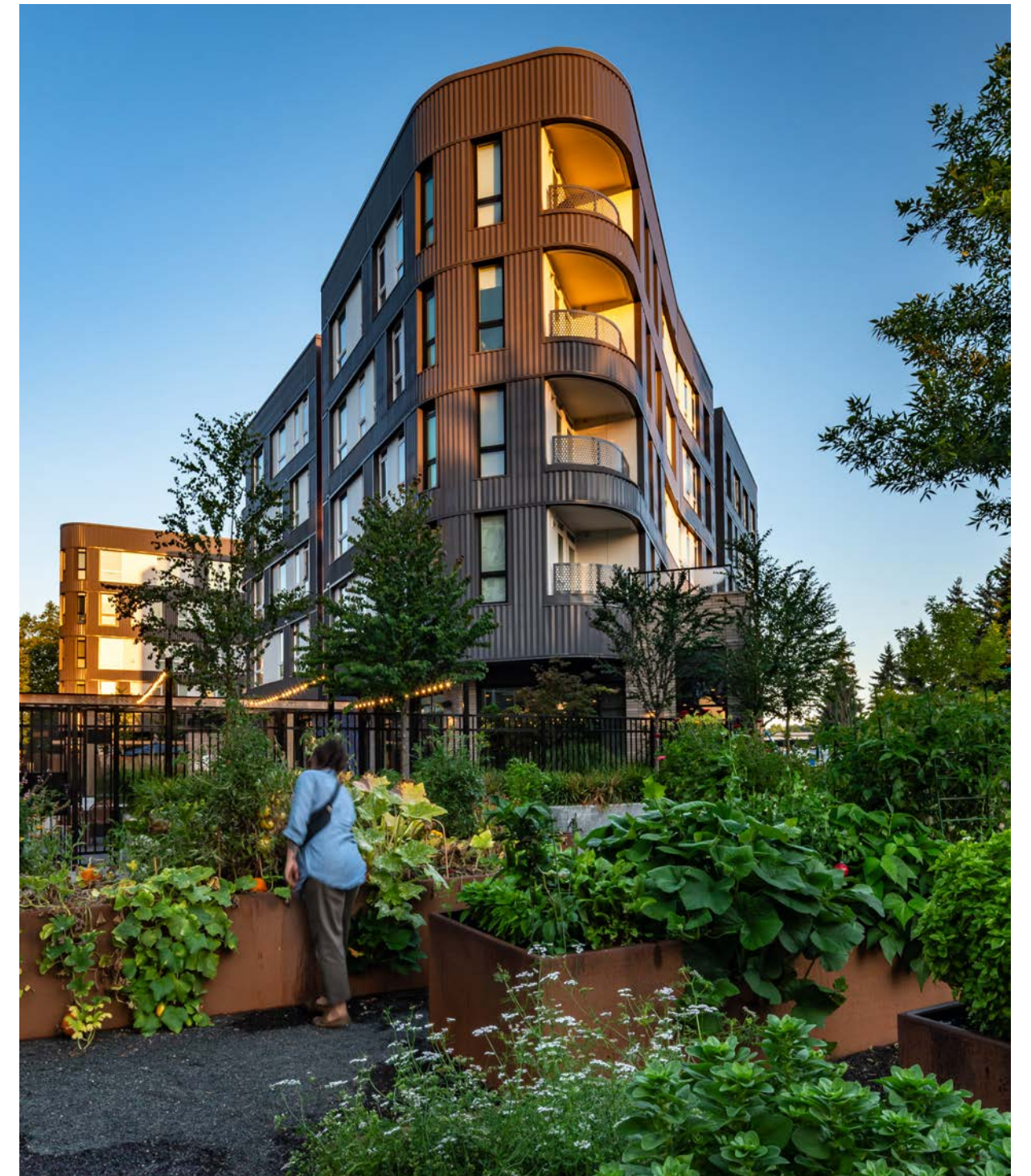


The southeast building amenity courtyard opens up to the east, interfacing with a second community garden, an early learning play area, and the neighboring East Lake Sammamish Parkway Trail and a vibrant retail core area in Redmond.

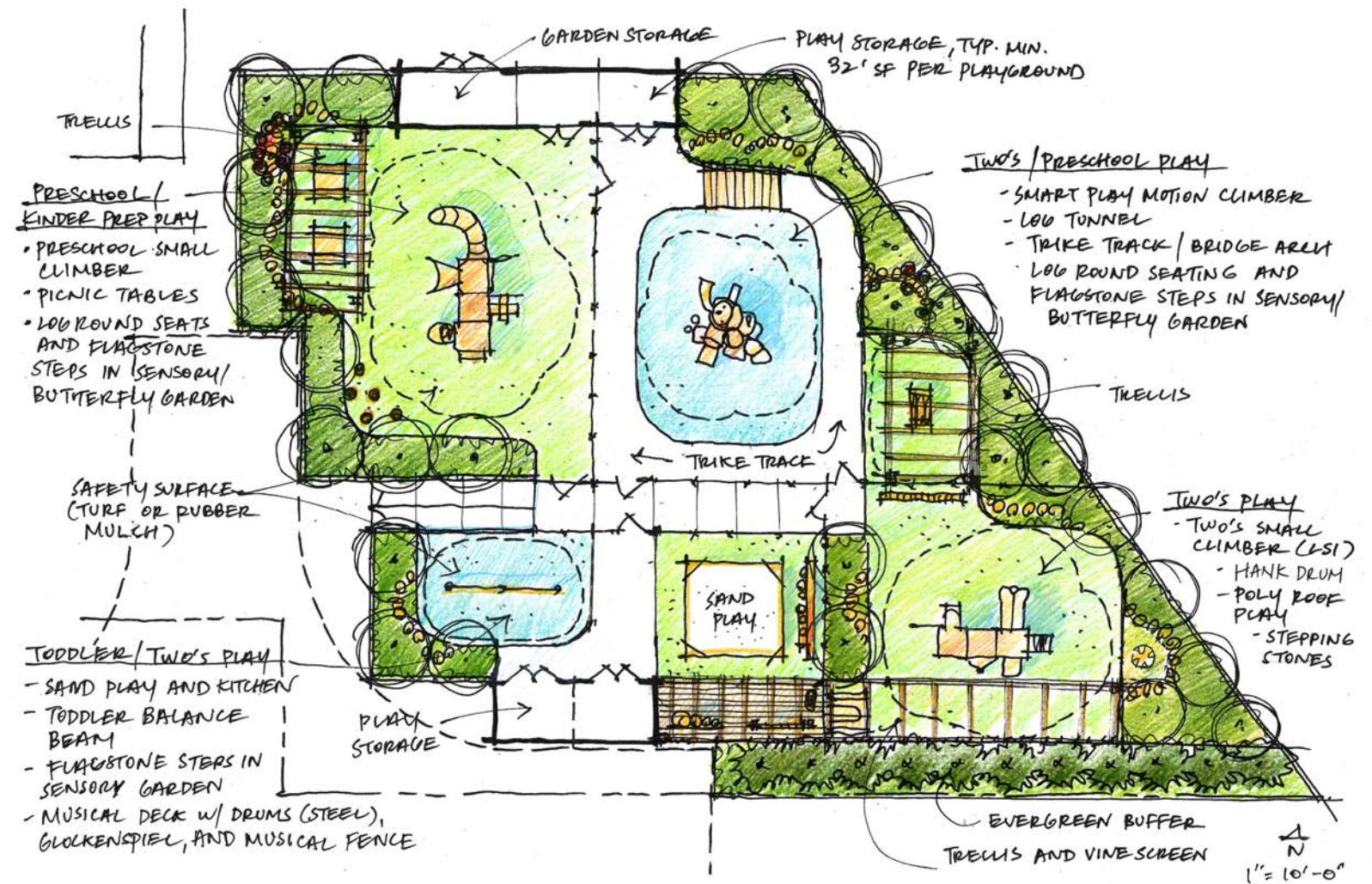


The community garden areas are popular with residents and members of the surrounding neighborhoods that can access the gardens from the East Lake Sammamish Parkway Trail - raised planters overflow with produce!





Wood cube seating, custom-built tool sheds, composting and raised planters draw residents and community members to the multiple on-site community garden spaces. Participation is high!



The larger of two outdoor early learning playgrounds, the southeast playground is designed as a sensory play garden separated for four distinct age groups, with all-weather synthetic turf, sensory and butterfly friendly flowering gardens, musical instruments, trike tracks, sand play and multiple play climbers.



The north-south pedestrian spine culminates at the central art and seating node, and includes raised planters with lush evergreen plantings, catenary lighting, and live/work entrances to activate the trail.



With privacy sited only where necessary, the pool lounge area has decorative wood screening that brings warmth to the space while also allowing activation and view exchanges between the pool lounge area and the promenade.



The central pool courtyard also includes a large dining lounge with a pergola strung with festive catenary lighting, barbeque grill islands, lounge seating rooms for multiple groups of people, fire pits and a turf game lawn.



A second-story courtyard consists of private patios organized around mounds of grasses and native trees - a valuable amenity to residents that live above as well! Custom designed balconies by David Franklin reflect sunset colors and are inspired by rippling water.



The undulating planting design of grasses, native trees and decorative cobble is revealed in the view of the second-story courtyard from the roof deck and units above.