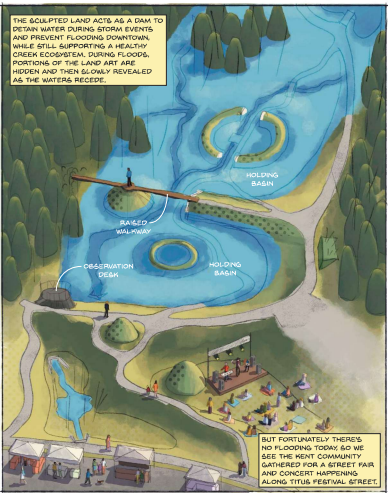
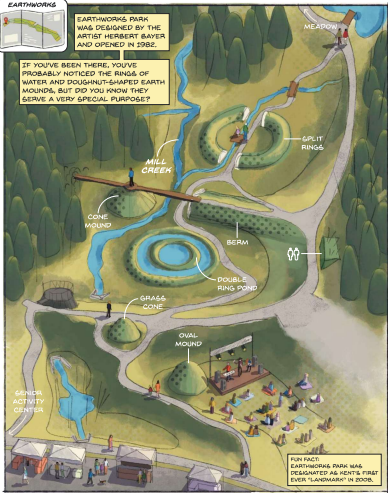
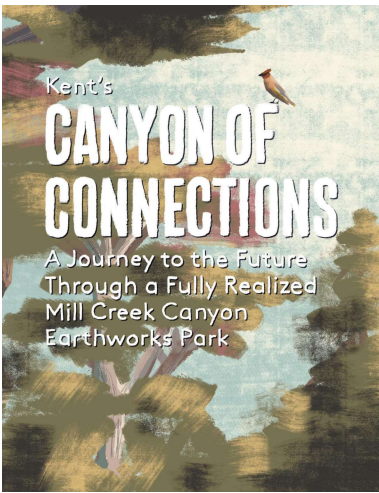
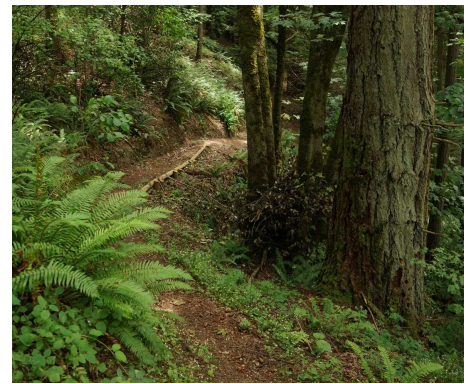
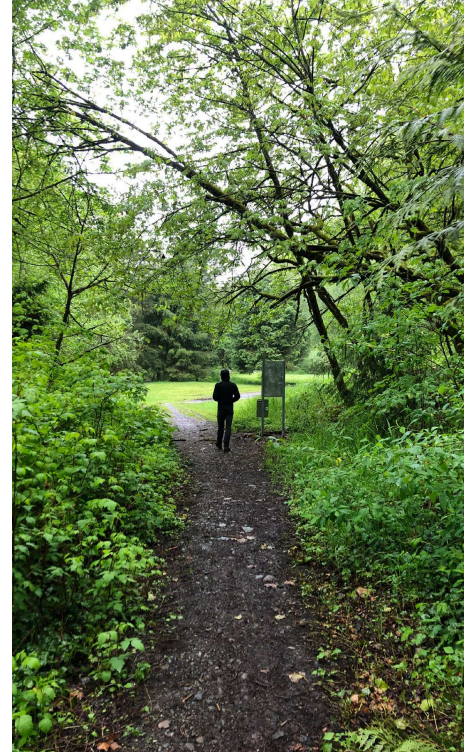


ICONIC LAND ART CONTINUES TO INSPIRE



AN IMMERSIVE, DYNAMIC NATURE BASED EXPERIENCE



SITE PLAN AS GRAPHIC NOVEL



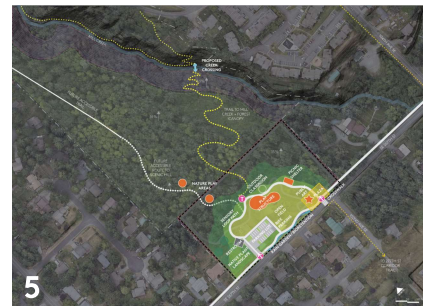
INFORMATION EXCHANGE TO BUILD SHARED UNDERSTANDING



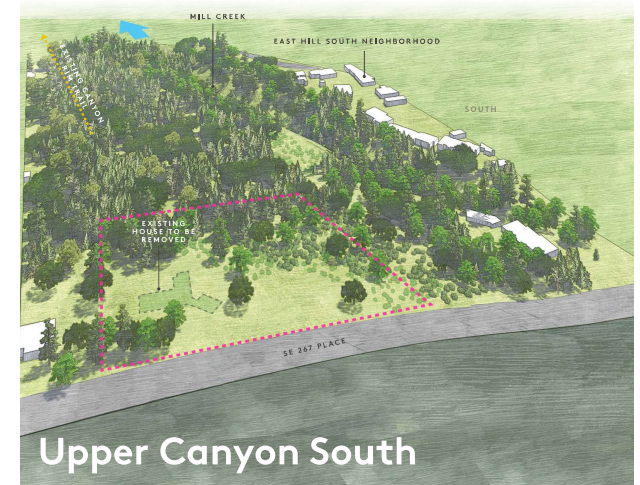
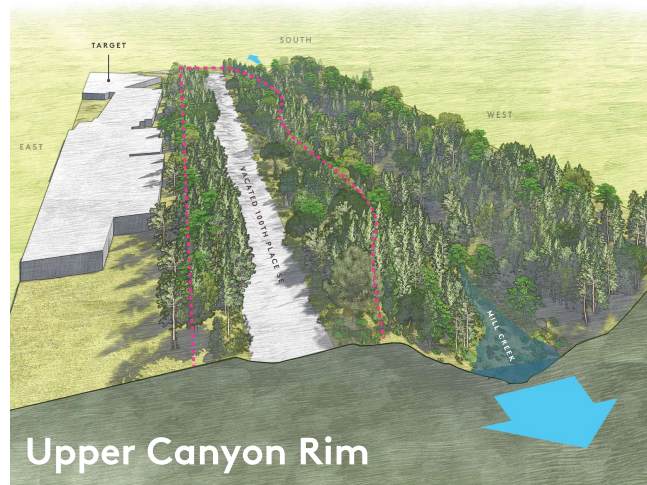
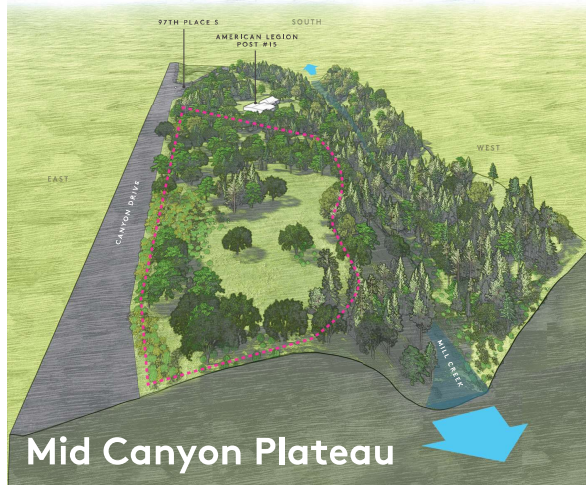
VISUALIZATIONS TO PROMPT DISCUSSIONS ABOUT ACTIVATING EXISTING SPACES



PROGRAMMING EXISTING AND NEW PARK ACQUISITIONS



MOBILE KIOSKS SUPPORT FEEDBACK FROM PUBLIC MEETINGS AND LIBRARY EXHIBIT



TRI-FOLD KIOSK PANELS



KIOSKS FOLDED

I'm most excited about ...

"The nature play and the swings. Since I love playing and relaxing, if I could relax outdoors, even better!"

"Nature play, pedestrian bridge, and canyon overlook"

"All of [the improvements], the more features, the more people around. It's a great place but feels unsafe, so improvements will bring more people and therefore feel safer."

WAYFINDING AS AN INVITATION TO WELCOMING EXPERIENCES



EASY URBAN PATH

SIDEWALKS SURROUNDING THE CANYON AND PARK

Sidewalks surrounding the canyon with paved surfaces, minimal elevation gain and short mileage.

Accessible Meadow Loop
0.25 miles, paved

Accessible Bridge Loop
1.5 miles, gravel, paved

PARK TRAIL

TRAILS ALONG THE TOP OF THE CANYON AND PARK AND ACCESSIBLE LOOP TRAILS

Trails along the top of the canyon and park and accessible loop trails with gravel or sidewalk surface and low to medium elevation gain.

Downtown Rim Route
2 miles one way, paved, gravel path

Water Trail
2 miles, gravel

HIKING TRAIL

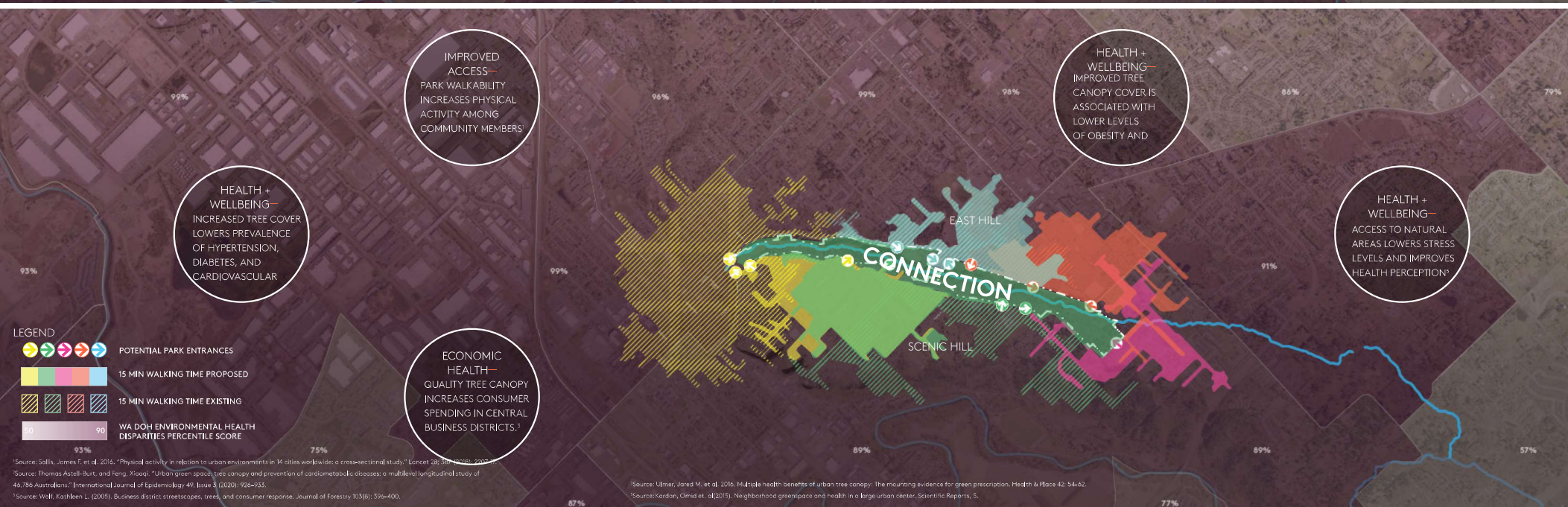
TRAILS INTO AND THROUGH THE CANYON

Trails into and through the canyon with uneven packed earth surfaces, higher elevation gain and at times trail obstacles to navigate.

Adventure Loop
1.5 miles, trail

Hike to Downtown
1.5 miles, trail

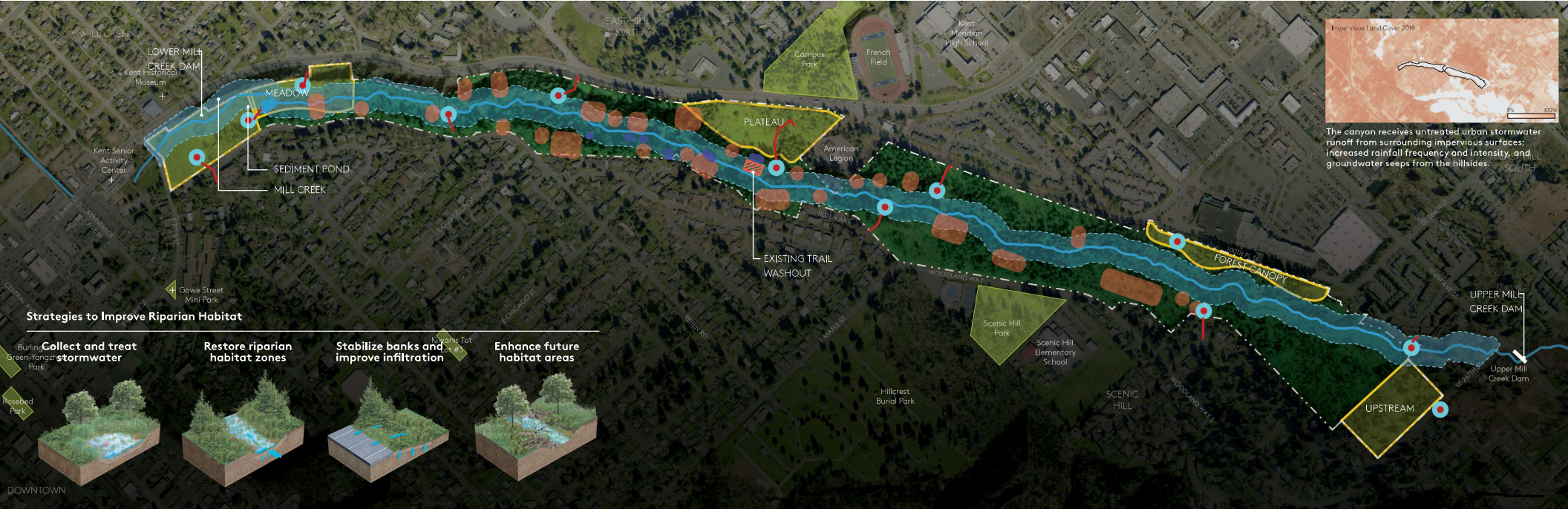
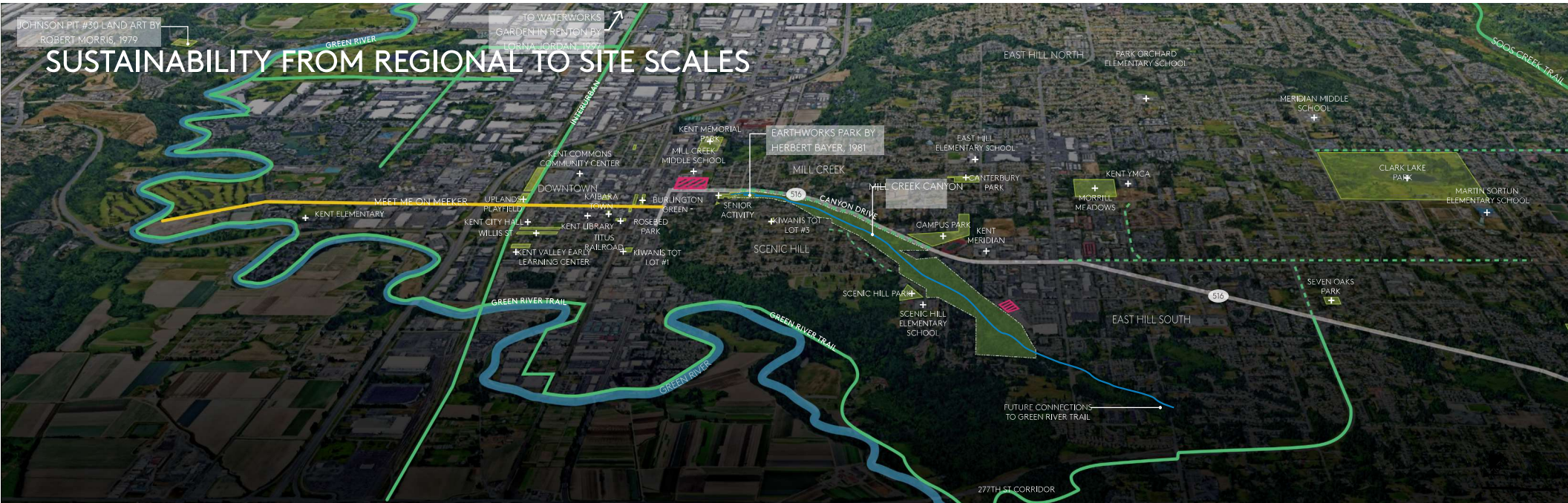
INCREASING EQUITABLE ACCESS WITH STRATEGIC TRAILHEAD LOCATIONS



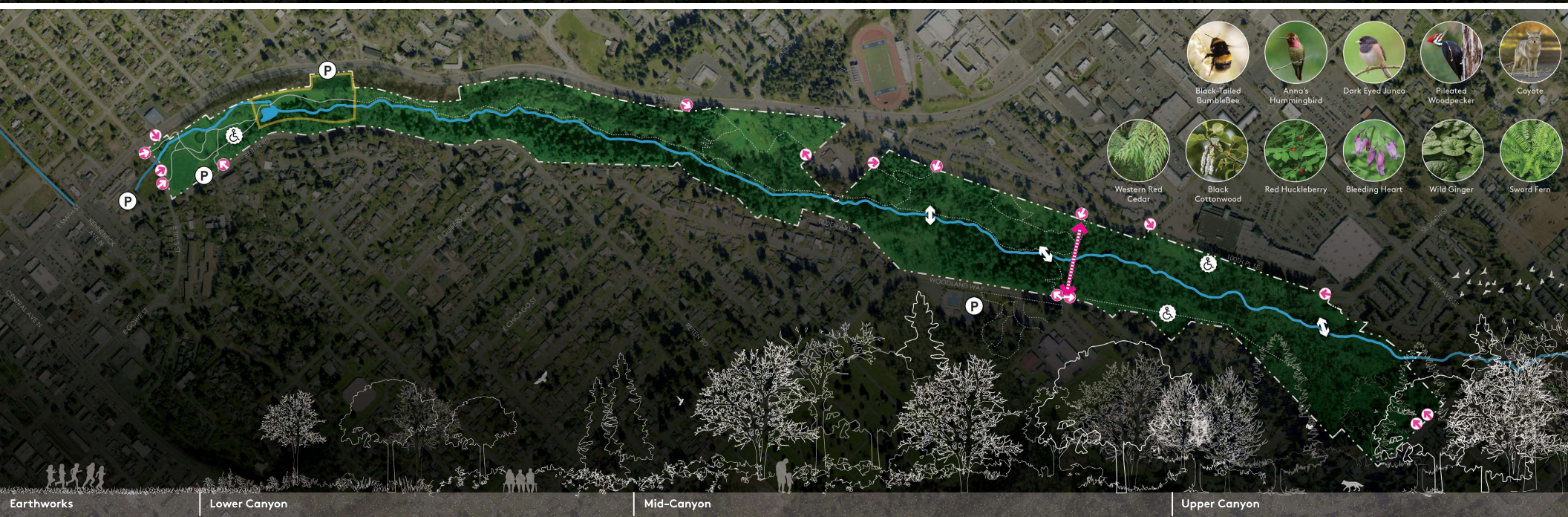
JOHNSON PIT #30 LAND ART BY ROBERT MORRIS, 1979

TO WATERWORKS
GARDEN IN RENTON BY
LORNA JORDAN, 1995

SUSTAINABILITY FROM REGIONAL TO SITE SCALES



INCREASED NATURAL RESOURCE MANAGEMENT SUPPORTS THE CANYON EXPERIENCE

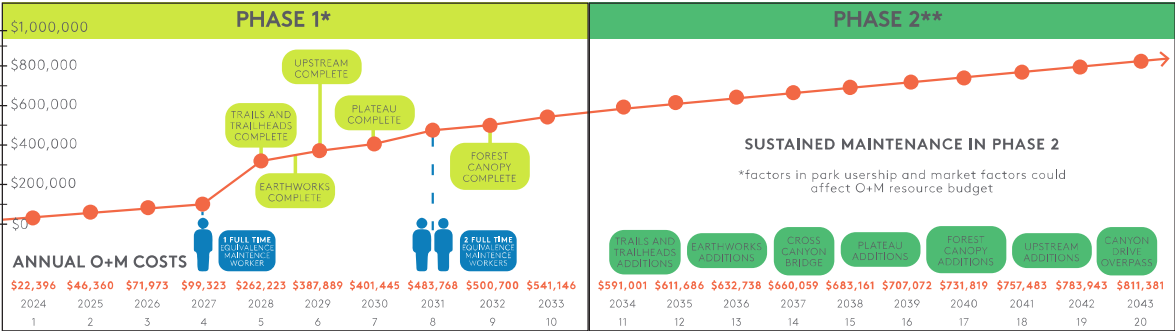


PLANNING FOR O+M STAFFING TO MATCH CAPITAL PARK GROWTH

0-10 YEAR PLAN	
TRAILS AND TRAILHEADS	\$5.5M
EARTHWORKS	\$2.4M
UPSTREAM	\$2M
MEADOW	\$1M
PLATEAU	\$2M
FOREST CANOPY	\$1M
CROSS CANYON BRIDGE	\$2.1M
\$16M CAPITAL INVESTMENT	

10-20 YEAR PLAN	
UPSTREAM	\$5M
MEADOW	\$1M
PLATEAU	\$6M
FOREST CANOPY	\$4M
TITUS FESTIVAL STREET	\$ TBD
CANYON DRIVE OVERPASS	\$ TBD
\$16M+ CAPITAL INVESTMENT	

*THE ABOVE NUMBERS ARE PLANNING LEVEL COST ESTIMATES AND INCLUDE ESCALATION THROUGH JANUARY 2024. ESTIMATES FOR WORK WITHIN THE RIGHT-OF-WAY REQUIRES FURTHER ENGINEERING.

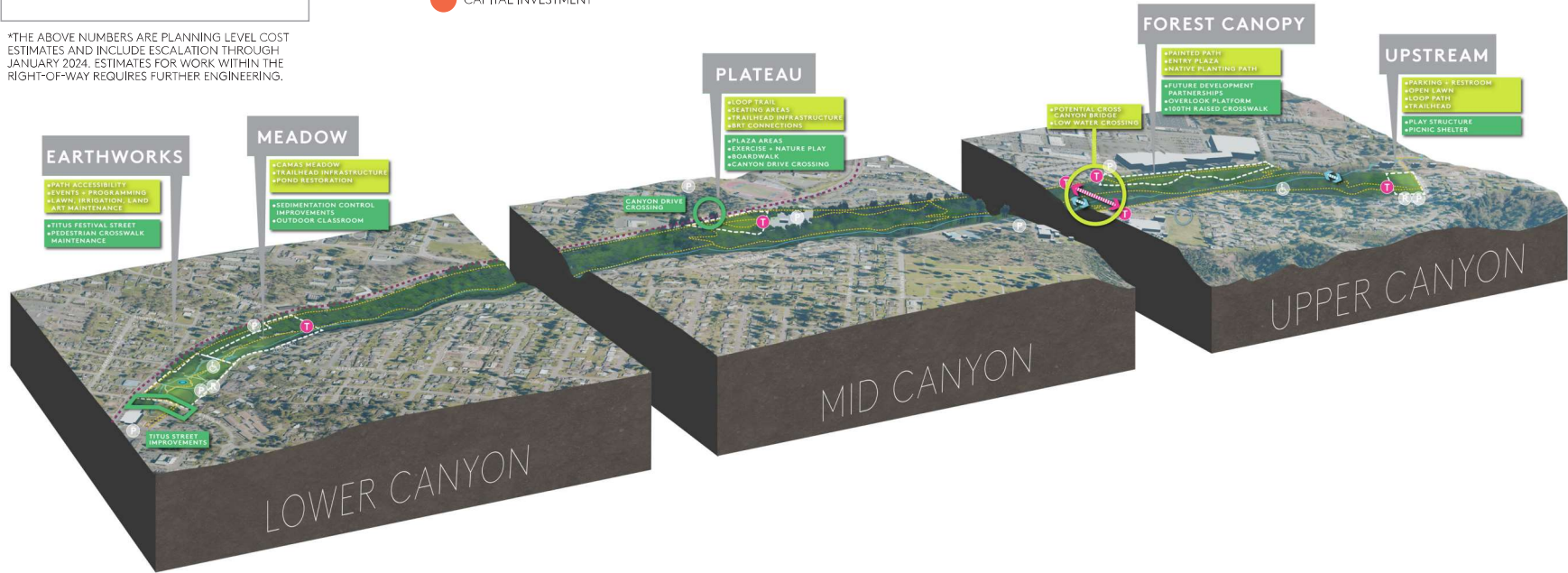


ASSUMPTIONS: 3.5% ANNUAL ESCALATION

*Phase 1 is prioritized


**Phase 2 in no particular order

- PHASE 1 INVESTMENTS
- PHASE 2 INVESTMENTS
- CAPITAL INVESTMENT



APPROACHABLE GRAPHIC NOVEL FOR KIDS TO SHARE WITH PARENTS

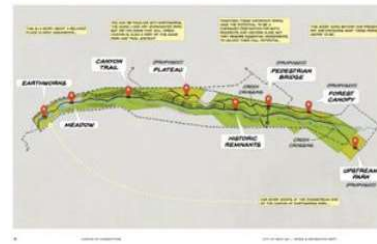




Parade

CANYON OF CONNECTIONS

*A Journey to the Future
Through a Fully Realized
Wild Grass Canyon
in Northwest Park*



By the Director of State, we hope you understand that this state should go on record stating it fully supports the established law.

If you would like to learn more about the project, please visit the [PR](#) site below.

