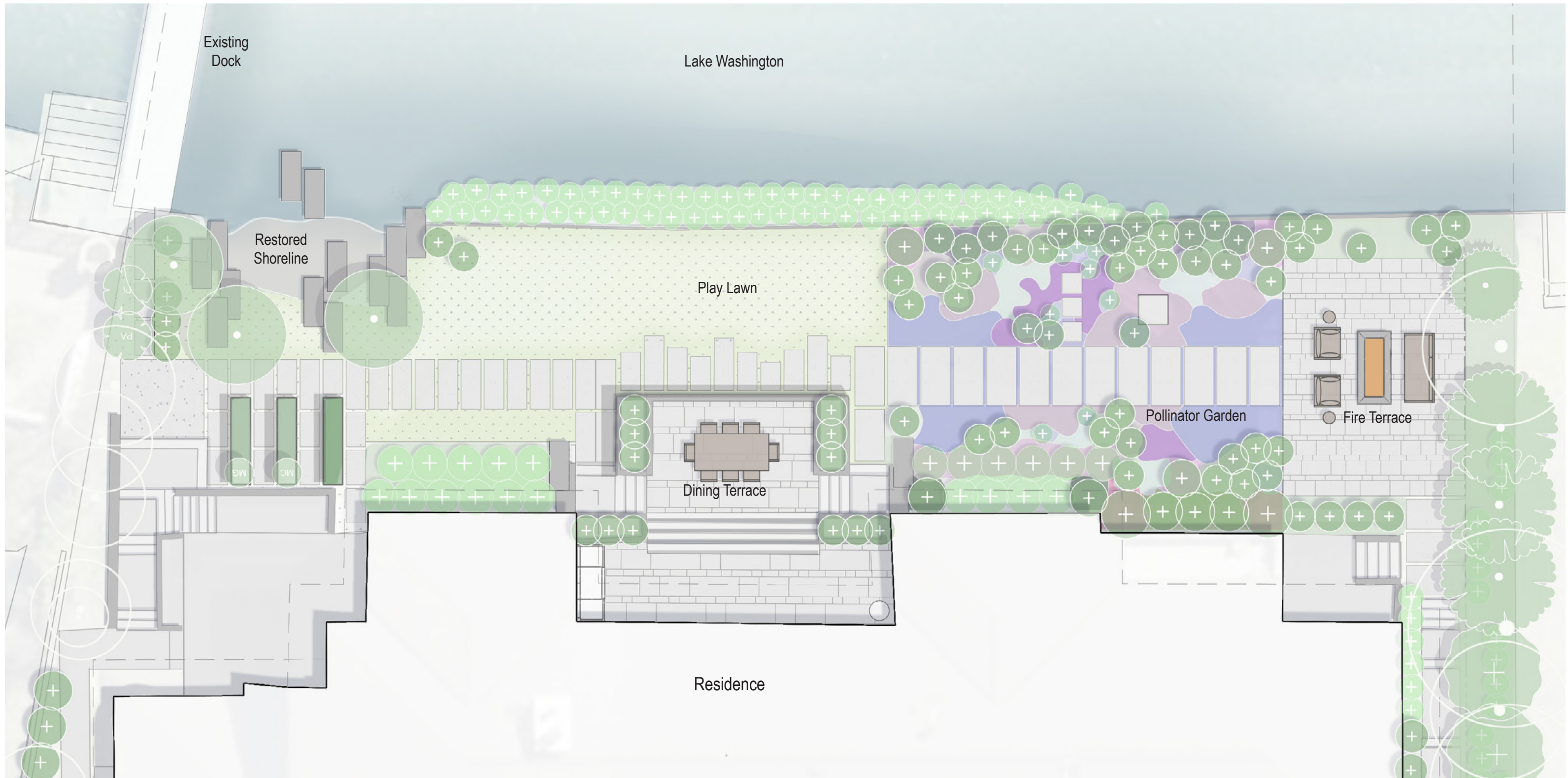


SHORE BLOCKS



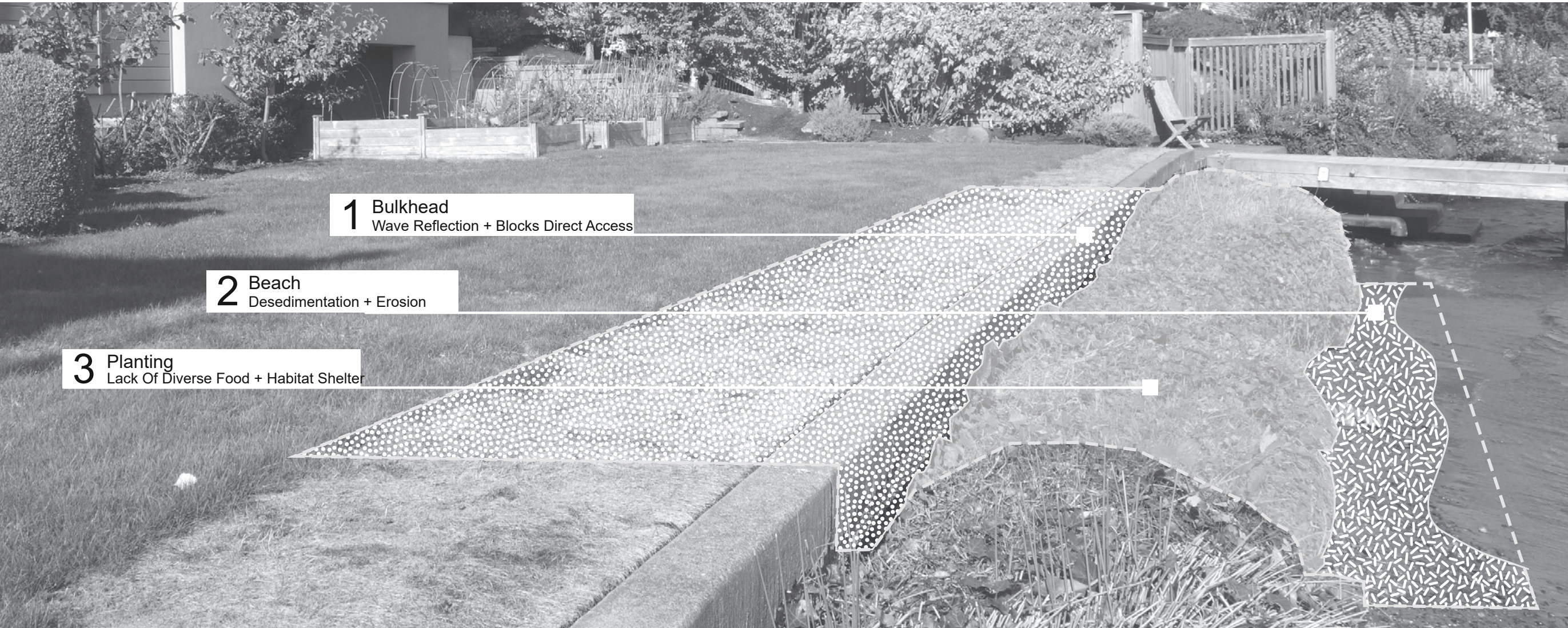
REIMAGINING CONNECTIONS

Shore Blocks restores the site's relation to Lake Washington by replacing a concrete bulkhead with modern shoreline armoring and a pebble beach. The redesigned cove improves shoreline access for owners while enhancing critical habitat for endangered fish.

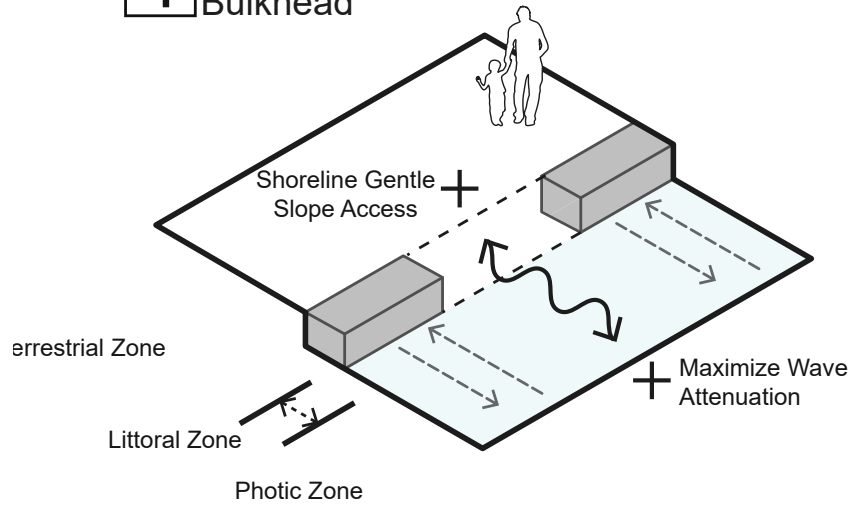


SHORE BLOCKS PLAN

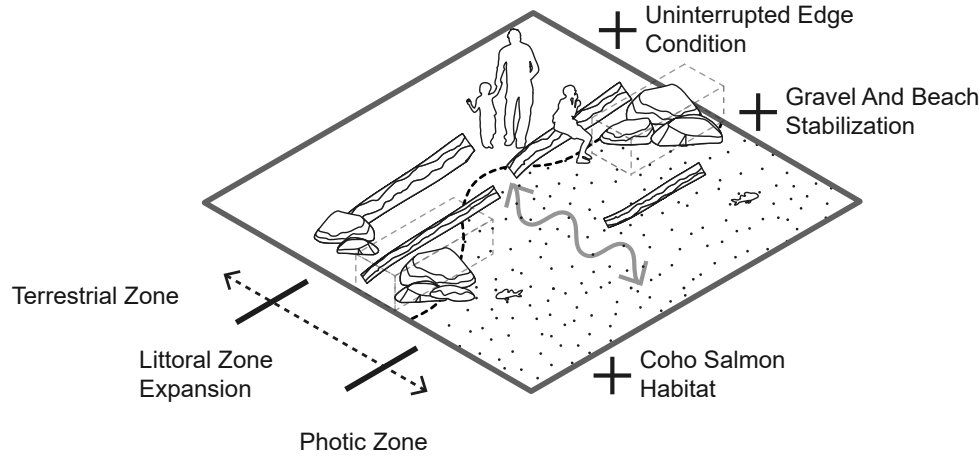
The design creates over 20 feet of shoreline habitat, a pollinator garden, and spaces for enjoying views and gathering.



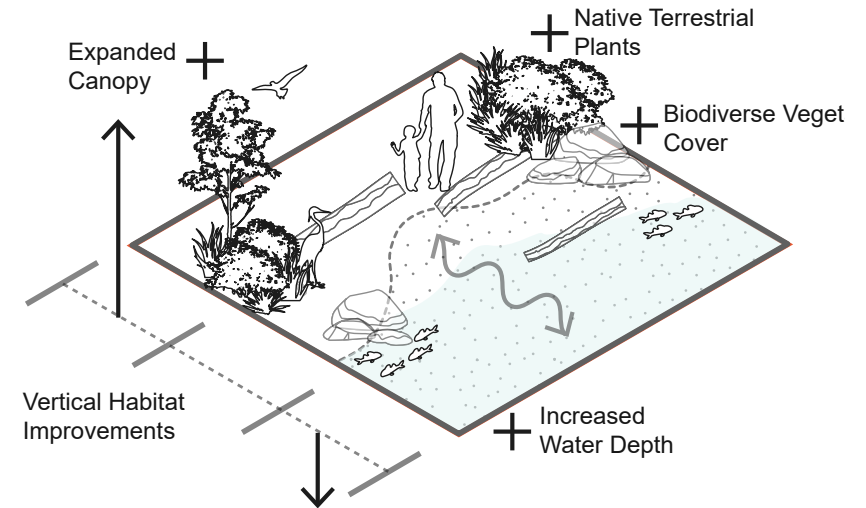
1 De-Armoring Bulkhead



2 Beach Reestablishment

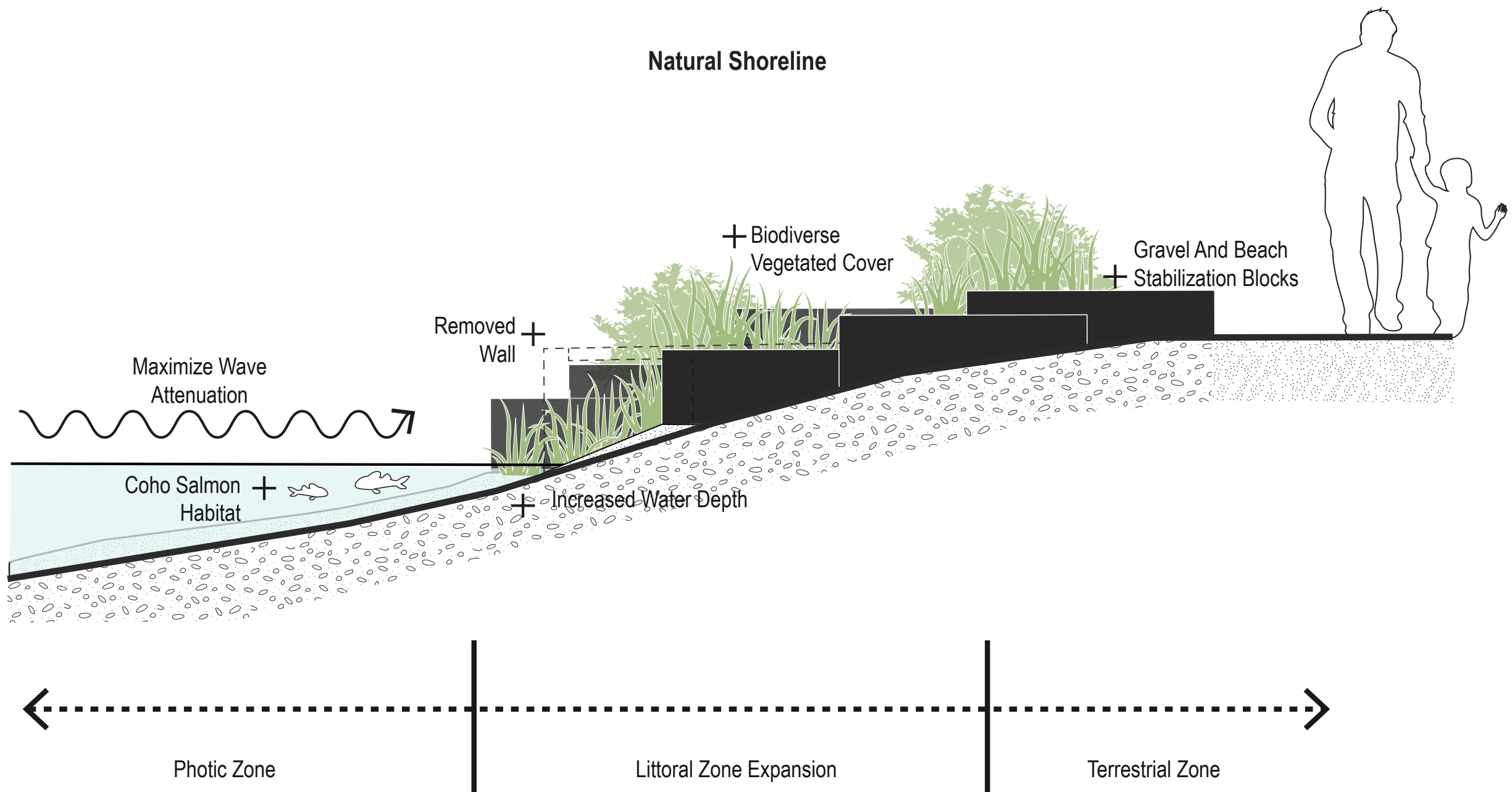


3 Shoreline Planting



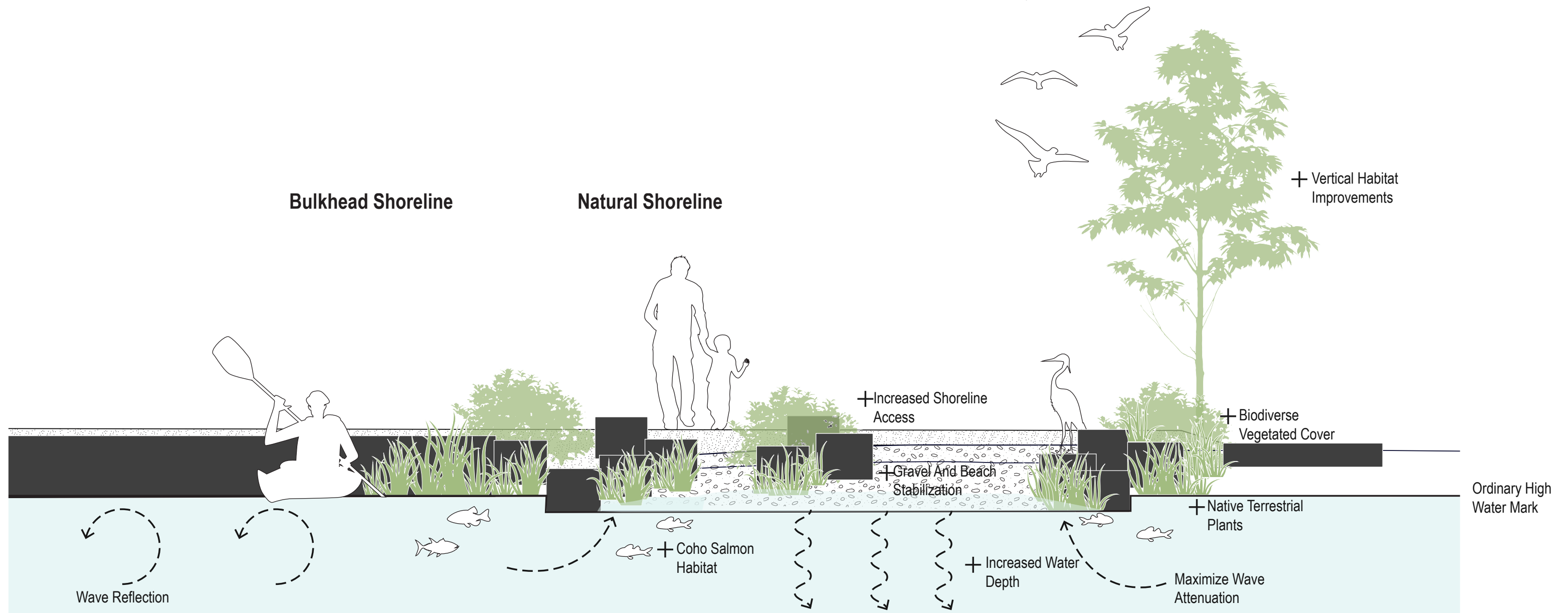
SHORE RESTORATION

The project creates new coho salmon habitat in an imaginative way.



SHORE BLOCKS SECTION

The section reveals the expansion of the littoral zone created by removing over 20 feet of bulkhead.



SHORE BLOCKS ELEVATION

The elevation conveys the improved habitat for salmon and other wildlife, as well as improved human access to the shore.



CONTEXT

The outdoor dining area perches above the garden and provides a serene view of Lake Washington and Mount Rainier. Extremely durable materials such as regionally sourced stone are used to minimize future maintenance needs.



WELL-CRAFTED MATERIAL

Locally quarried solid Valdes sandstone blocks echo the home's rectangular motifs. Cut and honed for a smooth finish, they complement native plants that will grow to provide shade along the shoreline.



ECOLOGICALLY SENSITIVE

Biodiversity is expressed with the pollinator garden. Paving and lawn are minimized. Plants were selected with the intent of providing habitat throughout the year.



CELEBRATING THE SEASONS

The design team incorporated a thriving four season pollinator garden, replacing lawn with biodiverse, ecologically rich plantings. Chosen for year-round interest, these plants enhance beauty and experience while creating a dynamic habitat for insects and birds.



INSIDE / OUTSIDE CONNECTIONS

Accessible from the home's interior and garden stairways, the terrace features a dining and grilling area. A welded steel railing matches the fence and the home's trim. The terrace offers stunning views of the lake and mountain.



RECREATIONAL ACCESS

The redesigned cove enhances shoreline access with sculptural Shore Blocks for seating and water activities. The improved beach supports swimming and hand-carry boat launching, creating a functional, inviting space that deepens the owners' connection to the waterfront.



GATHERING

The outdoor living space features a custom steel fire feature. The patio is paved in a running bond ashlar pattern to match the dining terrace. Individual pavers crossing the lawn are sized in proportion to the shore blocks.



FINE MATERIALS

High quality finishes include the steel-framed fence. Overlapping cedar slats allow light, sound, and breezes to pass through while maintaining privacy. The fire feature uses a variation of the fence slat motif to define the vertical cladding.



DYNAMIC SHOREFRONT

Creating the cove involved removing part of the bulkhead, regrading the slope, and using minimalist shore protection. The new pebble beach enhances the natural aesthetic while providing essential, fish-friendly habitat for endangered Chinook salmon.