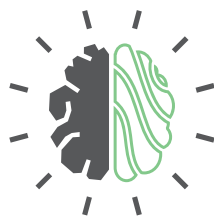


IMAGINE  
**TOMORROW**  
WASLA CONFERENCE 2016



AMERICAN SOCIETY OF  
LANDSCAPE ARCHITECTS

Washington Chapter



IMAGINE  
**TOMORROW**  
 WASLA CONFERENCE 2016

**FRIDAY, APRIL 1**

The Lynnwood Convention Center  
 7:00am – 7:30pm

**TABLE OF CONTENTS**

Sponsors	3-4, 7, 28
Schedule	6
Keynote Plenary Session	8-9
Message from the President, PDH & Info, Tradeshow, Reception	10
Chair Introduction	11
Breakout Session 1	12-15
Breakout Session 2	16-19
Breakout Session 3	20-23
Breakout Session 4	24-27
Exhibitors	29
Map	30

Educational sessions run from 8:15 AM to 5:30 PM and will be immediately followed by an evening reception on the upper concourse outside of rooms 2D and 2E.

Session materials (presentations, supplements) and presenter bios are available online at the 2016

WASLA Conference website:

[www.wasla.org/2016-wasla-conference](http://www.wasla.org/2016-wasla-conference)



Sage Receptacle: Patents pending.  
Freesia Bench: US Patents D710,624 S;  
D710,626 S; D711,175 S; D726,473 S;  
D726,474 S; D727,669 S.  
Canada © 152499; 153910; 153911.

## *Keeping up appearances since 1962.*

*For over 50 years, Victor Stanley has designed, engineered, and manufactured timeless site furnishings so you can bring communities to life. The Sage side-door litter receptacle joins contemporary and functional design with enduring strength. We engineered Sage to withstand flexing and distortion inherent in perforated sheet metal while keeping the design serviceable, long lasting, and attractive. Sage features two unique side-deposits, a full interior steel frame, strong exterior panels formed from 11-gauge steel nested in solid-steel frames, and our signature friction-eliminating hinges.*

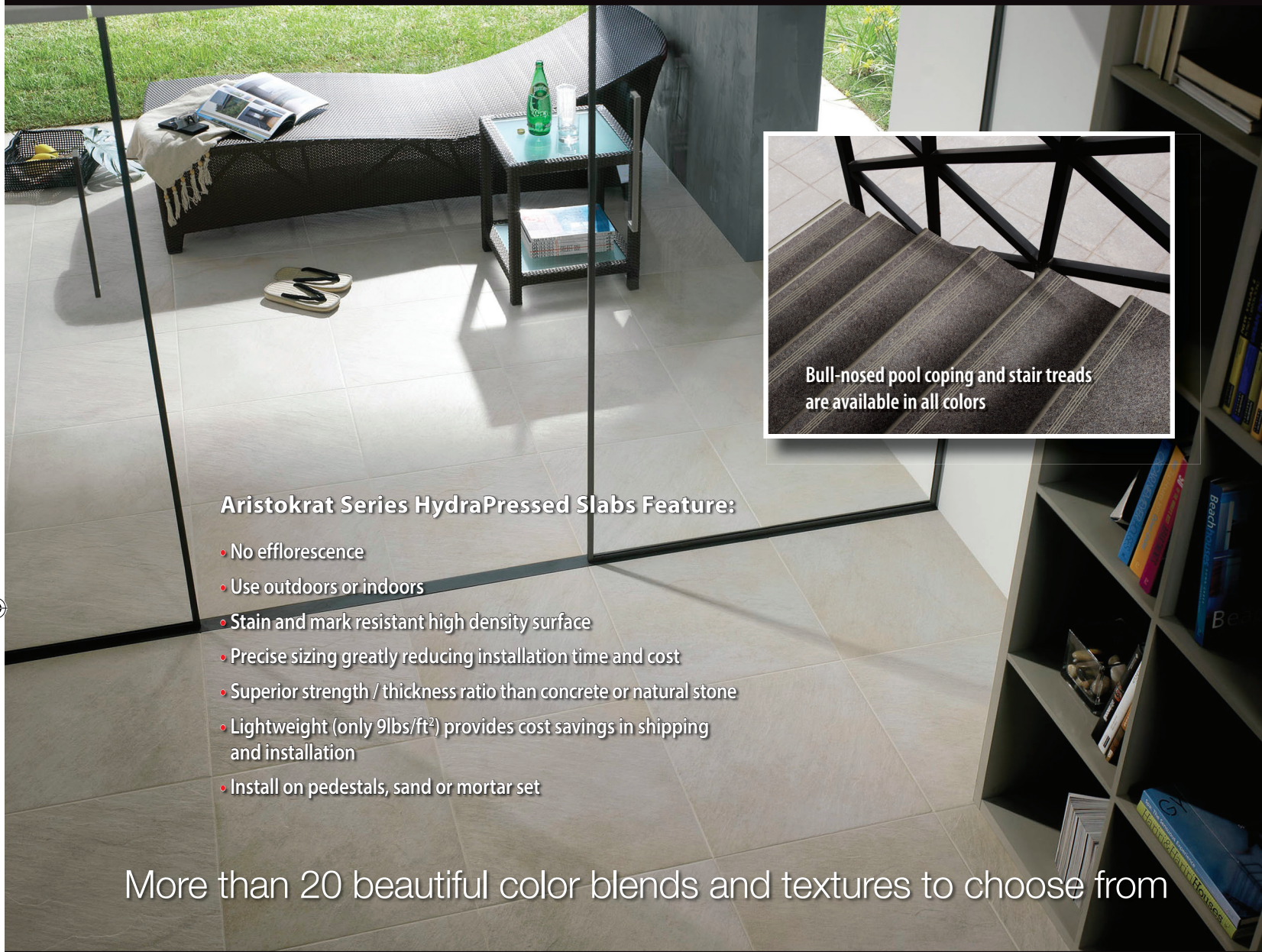
*Contact Sarah Kwon at [sarahk@victorstanley.com](mailto:sarahk@victorstanley.com)*



*Create a timeless moment.®*

VICTORSTANLEY.COM

# Aristokrat Series 2cm HydraPressed Porcelain Slabs



Bull-nosed pool coping and stair treads are available in all colors

## Aristokrat Series HydraPressed Slabs Feature:

- No efflorescence
- Use outdoors or indoors
- Stain and mark resistant high density surface
- Precise sizing greatly reducing installation time and cost
- Superior strength / thickness ratio than concrete or natural stone
- Lightweight (only 9lbs/ft<sup>2</sup>) provides cost savings in shipping and installation
- Install on pedestals, sand or mortar set

More than 20 beautiful color blends and textures to choose from



**ABBOTSFORD**  
CONCRETE PRODUCTS

- Interlocking Pavers
- HydraPressed Slabs
- Retaining Wall Systems

**Call us at 1-800-663-4091 or 1-206-499-5414**

Or for more information and to download our Aristokrat Series brochure visit:

**[www.pavingstones.com](http://www.pavingstones.com)**

*imagine...*

WHAT IF

all your  
PROJECTS RAN SMOOTHLY  
and all your  
LANDSCAPES WERE BUILT  
to meet your  
high expectations?

COME FIND OUT MORE ABOUT  
**the nussbaum way**

**nussbaum** *group*  
landscape construction | organic maintenance services

# SCHEDULE

7-8:15am	<b>Registration and Breakfast</b>   Room 2E			
8:15-10am	<b>Welcome and Keynote Speakers:</b> David Rubin and Steve Austin   Room 2E			
10-11am	<b>Tradeshow Break with Coffee/Tea and Light Snack</b>   Room 2D			
	<b>PEOPLE</b>	<b>EARTH</b>	<b>ACTION</b>	<b>PLACE</b>
11am-12pm <b>Breakout Session 1</b> 1 PDH Each	Making Resilience Building Integral to the Design Process Room 2A Bob Scarfo, Ph.D., RLA	How New Construction Can Reduce the Spread of Noxious Weeds Room 1A Sasha Shaw; Nicole Price, ASLA	The Anthropocene: What Will it Mean for Practice Room 1BC Steve Austin, JD, ASLA	Tag Team at Seattle Center: Collaboration and the Design of a Rich and "Risky" Playground Room 2BC Clayton Beaudoin; Peter Tammetta; Eric Higbee, Judith Caldwell
12-12:10pm	<b>Transition Break</b>			
12:10-1:10pm <b>Breakout Session 2</b> 1 PDH Each	Introduction to Rooftop Agriculture in the Pacific Northwest Room 1BC Michael Sanchez	Pollinators in Landscape Architecture Today Room 2BC Tim Slazinik, PLA, ASLA, LEED GA; Leann Andrews; Sarah Bergmann; Leslie Batten, PLA, ASLA, LEED GA	Planning the Great American Landscape Room 2A Christopher L. Overdorf, ASLA	(Re)discovering the Slow(er) City in Sneakers: Running as Tool for Guiding Design in the Virtual Sonic Age Room 1A Elizabeth Umbanhowar, PLA, ASLA, LEED AP; Noelle Higgins, PLA, ASLA, LEED GA
1:10-2:45pm	<b>Lunch and Tradeshow Break</b>   Room 2D			
2:45-3:45pm <b>Breakout Session 3</b> 1 PDH Each	Equity in the Design of Public Space Room 1BC Mark Brands, ASLA; Shannon Loew; Lynne C. Manzo, PhD	Designing for Climate Resiliency: An Overview of Coastal Design Strategies and Applications in Bellingham Birch Bay Trail Room 1A Paul Agrimis, RLA, PE, PWS; Grace Li Bergman, PLA, GISP	Third Avenue Transit Corridor Room 2A Matthew Porteous, ASLA; Nancy Chan, ASLA; Rob Kish	Stormwater, Identity, and Social Purpose: Working with Stormwater to Create Place Room 2BC David Rubin, ASLA, FAAR
3:45-4:30 pm	<b>Final Tradeshow Break with soda and light snacks</b>   Room 2D			
4:30-5:30 pm <b>Breakout Session 4</b> 1 PDH Each	Accessible Design: Capitalizing on the Benefits of Nature Room 1BC Audrey West, PLA, ASLA; Ann Dinthongsai	Landscape Materials - Sustainable Sources and Systems Room 1A Philip "P.J." Benenati, LEED GA; Bron Heintz, LEED AP BC+C	Design Practice in Flux: Building a Dynamic Practice with "Next Generation" Designers Room 2A Christian Runge; Chuck McDowell; Caitlin Squier-Roper; Martha Cox; Susanna Burrows	A Healthy Tomorrow: Active Design Strategies for Buildings, Open Spaces and Neighborhoods Room 2BC Marieke Lacasse, ASLA, LEED BD+C; Alicia Daniels Uhlig, NCARB, LEED Fellow
5:30-7:30 pm	<b>Post-Conference Reception</b>   Lynnwood Convention Center   Upper Concourse			



## OGDEN

Ogden offers flexible curved or circular bench options to configure a style that you visualize. Available in a variety of radii, various seat materials and leg options for you to design your individual creation.

1 800 716 5506 | [maglin.com](http://maglin.com)



**MAGLIN**<sup>TM</sup>  
Site Furniture

**Certified Green Roof Installer**  
**Commercial & Residential**  
**Bondable for Larger Projects**



**pacific  
earth works inc.**

*"Award Winning Landscape Construction Since 1979"*

CALL US TODAY WITH YOUR

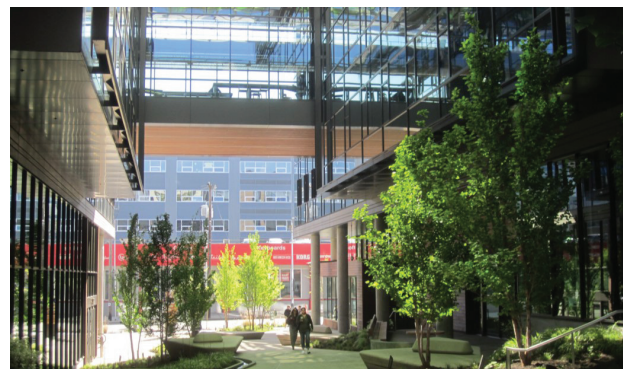
SELECT PROJECTS

206-625-1749

[WWW.PACICEARTHWORKS.COM](http://WWW.PACICEARTHWORKS.COM)

### LANDSCAPE CONSTRUCTION

- ◆ 36 Years in Business
- ◆ 39 State Awards
- ◆ 168 Years of Management Experience



# KEYNOTE PLENARY SESSION

🕒 8:45-10:00am

## Bridge: A Keynote in Two Movements

- 📍 Room 2E
- + 1 PDH, HSW-Yes

In music, the bridge provides a transitional pause within the whole of a composition in which to reflect upon earlier portions and prepare for the climax to come. Today's Keynote Address, presented in two movements, serves as a bridge within the whole of our profession - a transitional opportunity to reflect upon our collective past, to contemplate the "path we are on" as a global society, and to prepare for the climax to come for the landscape architecture profession in the 21st Century.

### A KEYNOTE IN TWO MOVEMENTS

#### Welcome to the Anthropocene: Our Reality and the Implications for Landscape Architecture

**Steve Austin, JD, ASLA**  
Instructor, Landscape Architecture, School of Design and Construction, Washington State University



The Anthropocene - the human era - refers to the profound, but perhaps not unexpected, realization that humans are now the single most dominant force on the planet. In this era, we face both the consequences of, as well as the limits to, our actions. Past and present considered, we confront the stark, demanding, and unavoidable reality we face as both global citizens and landscape architects.

#### On Light and Gravity: The Space Between

**David Rubin, ASLA, FAAR**  
Principal, LAND COLLECTIVE



Taking a long view of 21st century society, we explore the potential of landscape architecture as a profession and "the space between". Looking through the lens of art, quantum physics, and social science filtered through design, we will focus on this most impactful profession - one that can "save the world."





**Steve Austin** teaches landscape architecture, design theory, urban planning, and construction law at **Washington State University**. Steve's professional experience spans over 25 years as an award-winning land planner and designer, town and regional planner, land use attorney, community organizer and teacher. Steve owns a design and planning consulting business, and has led a planning commission in one of the fastest growing communities in the USA, been CEO of a regional planning organization in a 700,000 population metropolitan area, and helmed community-focused non-profits. Steve is committed to utilizing landscape architecture to increase environmental and community resilience as well as social justice.

**David A. Rubin** is the founding principal of **LAND COLLECTIVE**, a landscape architecture and urban design studio committed to practicing with an emphasis on socially-purposeful design strategies. Educated at Connecticut College and Harvard University, he has taught and lectured at a number of institutions, including Harvard University's Graduate School of Design, University of Pennsylvania School of Design, and Southern California Institute of Architecture. David is the 2011-12 recipient of the Rome Prize in Landscape Architecture from the American Academy in Rome. His projects have received awards and honors from the American Institute of Architects and the American Society of Landscape Architects, among others.

David founded **LAND COLLECTIVE** after 21 years in practice to devote himself to crafting landscapes which affect positive social change through empathy-driven design. His current commissions include the new plaza and streetscape afront the New York Stock Exchange in New York City, a 10.5-acre public park in Westfield, Indiana, and the University of Pennsylvania's new South Bank Innovation Campus in Philadelphia, Pennsylvania. His key built works include: the creation of a new campus and commons for Eskenazi Health Services Hospital, Indianapolis; the landscape at the California Memorial Stadium at the University of California in Berkeley, CA; the 3-star Sustainable Sites certified Canal Park in Washington, D.C.; and the establishment of Lenfest Plaza at the historic Pennsylvania Academy of the Fine Arts in Philadelphia, PA. His studio's work includes a diversity of typologies, in locations as diverse as California, Rome, New York City, Washington, D.C., the Cayman Islands, Indianapolis, Saint Louis, and Philadelphia.



**LEARNING OBJECTIVES:**

- Understand the reality and the impacts of the Anthropocene
- Question what the Anthropocene means to the practice and profession of Landscape Architecture
- Understand the breadth of our constituency and the potential for impactful design
- Appreciate the full potential of landscape architecture as a profession
- Know why Stephen Hawking aspires to be a landscape architect



## MESSAGE FROM THE PRESIDENT

Landscape Architects are playing an increasingly important role in how the human race engages with the planet. Our role is an important one when considering how our communities plan for the future on a changing planet. The 2016 WASLA conference is your opportunity to engage in dialogue with fellow landscape architects, designers and students; allied professionals; and contractors on the challenges and opportunities we face as design professionals in an increasingly dynamic climate. What do you imagine for tomorrow? How can we as a profession help humankind tackle the challenges we all face in the future? These are far reaching questions, but big thinking will be required to tackle the big challenges we all face in the future. Welcome to the conversation, enjoy the company, the surroundings and the thought provoking education sessions.

**David Stipe, PLA, ASLA**  
WASLA President

## TRADE SHOW

You have been given a vendor passport. Collect 10 signatures from 10 different vendors and you'll be eligible for raffle prizes! Drawings will be held during the last tradeshow break and during the post-conference reception.

## RECEPTION

Why fight traffic when you can hang out and have one on us? Join us at the upper concourse for heavy appetizers and drinks immediately following the last breakout session. See you there!

## EARN PROFESSIONAL DEVELOPMENT HOURS

This conference meets the continuing education requirements of the Washington State Practice Act and the standards of the national Landscape Architecture Continuing Education System (LA CES). Attendance at the conference can offer 5 Professional development hours. Professional development hours (PDHs) is the term that WASLA, LA CES and the Washington State Board of Licensure for Landscape Architects use to describe how much continuing-education credit a course provides toward the maintenance of your landscape-architecture license. Other continuing education systems may use different criteria for determining continuing education credit hours. PDHs are listed for each session that qualifies and whether it is Health Safety and Welfare (HSW) compliant content.

Choose appropriate continuing education to serve your professional needs and keep records of your attendance according to the Board guidelines. WASLA makes every effort to structure educational opportunities that adhere to the most widely acknowledged guidelines of registration boards requiring continuing education. Please direct specific questions to your state licensing boards.

## ATTENDANCE VERIFICATION AND CERTIFICATES (NEW INFORMATION FOR 2016!)

This year, participants will receive a link to be able to select the courses you attended and print out your continuing education certificates. Look for this link to come in an email shortly after the conference.



## CHAIR INTRODUCTION

### Welcome to the 2016 WASLA Annual Conference: Imagine Tomorrow

This year's conference theme, Imagine Tomorrow, presents a classic tale of good versus evil. Will landscape architects emerge as the heroes of tomorrow, poised in position to influence and change the future for the better or like so many dystopian novels, is world destruction inevitable and landscape architects will be left to pick up the pieces?

We present to you a series of educational sessions that debate this year's theme with topics ranging from sustainable materials, to equity, to the Anthropocene. To guide your selection of courses, we have created track themes: People, Earth, Action and Place. Pick one from each, if you like!

Last, I encourage you to visit this year's sponsors and exhibitors. We have designed our day to allow you more time to explore their great products and services, to augment the educational sessions with tools to aid your practice and of course, without their generous support this conference would not be possible. Welcome and we hope you enjoy the day!

**Courtney Landoll, PLA, ASLA**  
2016 Conference Committee Chair

## CONFERENCE COMMITTEE

**Courtney Landoll, ASLA**  
Conference Chair  
The Trust for Public Land

**Linda Ashby, ASLA**  
Linda Ashby Design

**Shannon Glass, ASLA**  
Seattle Department of  
Transportation

**Derrick Eberle, ASLA**  
Bruce Dees and Associates

**Jillian Reiner, ASLA**  
Project Groundwork

**Kate Richards, ASLA**  
Project Groundwork

**Grace Bergman, ASLA**  
Environmental Science Associates  
(ESA)

**Malda Takieddine, ASLA**  
HDR

# BREAKOUT SESSION 1: PEOPLE

🕒 11:00-12:00pm

## Making Resilience-Building Integral to the Design Process



📍 Room 2A

+ 1 PDH, HSW-No

**Bob Scarfo, PhD, RLA**  
Land and Life, LLC

The Anthropocene Era evokes two primary reactions among individuals, businesses, and government agencies: Active exploration and innovation that benefits community and society; or, Denial that reinforces a business-as-usual approach to the future. By enlisting the involvement of previously under-utilized human and organizational resources in design and planning processes, landscape architects can inspire more engaging, innovative and empowering community-forward projects. Community resilience is being built into projects from the start and “new owners” are organizing to change local policies and regulations by fostering social networks and the basic building blocks of community resilience – people talking with and working with each other. Through discussion and case studies, this session will introduce successful rationales and methods.



### LEARNING OBJECTIVES:

- Learn how to identify and employ under-utilized human and organizational resources local to a project in planning and design processes
- Know how to gain the political clout needed to radically change policies and regulations in ways that enable the community to better prepare for shifts in climate, society, food security, and more
- Understand how to express a rationale that argues for resilience first and sustainability second

# BREAKOUT SESSION 1: EARTH

🕒 11:00-12:00pm

## How New Construction Can Reduce the Spread of Noxious Weeds

📍 Room 1A

+ 1 PDH, HSW-Yes



**Sasha Shaw**  
King County Noxious Weed Control Program

**Nicole Price, ASLA**  
N. Price Associates, LLC

The spread of noxious weeds onto public lands and private property is on the rise. They are spreading beyond roadsides and disturbed sites into native plant communities. Some noxious weeds persist or even spread during construction projects and can cause significant maintenance costs post-construction. This session will discuss how new construction can reduce the spread of noxious weeds and remove them from the landscape, explain how noxious weeds are defined and regulated in Washington State, show how to identify noxious weeds and where to find information about the removal of existing plants, identify resources available through King County, highlight a few common weeds, and propose ways to incorporate information about noxious weeds into pertinent specification sections. Removing noxious weeds from job sites using proper techniques will reduce their spread, decrease maintenance post occupancy, and preserve the health of surrounding native plant communities.



### LEARNING OBJECTIVES:

- Acquire an understanding of the definitions and regulations for the different noxious weed classes as defined by Washington State.
- Learn where to find information about how to remove noxious weeds without spreading seeds, roots, and stems that can produce new plants.
- Learn ways to incorporate noxious weed identification and removal into specification sections.
- Understand how the presence of noxious weeds on a job site impacts the client.

## BREAKOUT SESSION 1: ACTION

🕒 11:00-12:00pm

### The Anthropocene: What Will it Mean for Practice?

📍 Room 1BC

+ 1 PDH, HSW-Yes

**Steve Austin, JD, ASLA**

Instructor, Landscape Architecture, School of Design  
and Construction, **Washington State University**



The goal of this session is to understand and document our reactions to the Anthropocene as well to illuminate the ideas that can be developed through collaborative means to help WASLA lead the profession forward. There is no predetermined outcome for this session - the idea is exploration. I anticipate that this will result in transformative dialogues - moving past defending points of view and opening up to what could be possible.



#### LEARNING OBJECTIVES:

- Consider the impacts that the Anthropocene will have on the practice of Landscape Architecture
- Become active participants in framing the future of the practice of Landscape Architecture

# BREAKOUT SESSION 1: PLACE

🕒 11:00-12:00pm

## Tag Team at Seattle Center: Collaboration and the Design of a Rich and “Risky” Playground

📍 Room 2BC

+ 1 PDH, HSW-Yes

Clayton Beaudoin  
Site Workshop, Principal

Judith Caldwell  
Caldwell Sculpture Studio

Peter Tammetta  
Highwire

Eric Higbee  
Pomegranate Center



In recent years, playground design has come under fire. Many complain that pressure from safety advocates and cautious, cash-strapped municipalities have created dull playgrounds lacking the qualities critical to children’s development. Things like risk taking and nature are designed away, beauty and comfort are discounted, and the play environment is contained to a sea of woodchips. Designers find themselves caught in the middle of these pressures and are seeking new ways to create rich, meaningful and safe places for children of all ages to play. This panel will discuss how the collaboration between landscape architect, artist, playground equipment providers and end-users resulted in a successful playground at Seattle Center, and will explore the benefits and challenges of early, sincere collaboration.



### LEARNING OBJECTIVES:

- Acquire a basic understanding of the opportunities and challenges associated with designing a playground in very public, high-use spaces.
- Gain an understanding of how the design team’s unique approach to collaboration - with each other, the public and the contractors - affected the project outcomes.
- Compare and contrast collaboration amongst design team “experts” and collaboration with users.

## BREAKOUT SESSION 2: PEOPLE

🕒 12:10-1:10pm

### Introduction to Rooftop Agriculture in the Pacific Northwest



📍 Room 1BC

+ 1 PDH, HSW-Yes



**Michael Sánchez**

Assistant Professor of Landscape Architecture,  
**Washington State University**

Urban agriculture in the 21st century is rapidly changing the face of food security and production, through backyard planters, community gardens and rooftop farms. While urban farming alone can not replace the volume of produce needed by a growing population of city dwellers, it can begin to educate everyone who eats where food comes from and empower them to have more control over what they eat and how they access their food.

Many cities in the East and Midwest (New York, Toronto, Chicago) are leading the charge in rooftop farming. What is happening in the Pacific Northwest? This session offers a broad overview of urban agriculture in the Northwest, with a special focus on rooftop farming, providing an array of resources, types of technologies available and case studies informing attendees of the complexities involved with this swiftly growing area of urban design.



#### LEARNING OBJECTIVES:

- Understand the social, cultural, ecological/biophilic, economic and health benefits of urban agriculture.
- Discover common challenges in the Pacific Northwest associated with introducing agricultural projects into urban environments and the necessities that lead to fruitful projects.
- Identify ways of integrating food production into existing green roofs and roofs that were not originally designed as green roofs.



## BREAKOUT SESSION 2: EARTH

🕒 12:10-1:10pm

### Pollinators in Landscape Architecture Today

A realistic look at accommodating the pollinators of our landscapes and agriculture in the years to come

📍 Room 2BC

+ 1 PDH, HSW-Yes



**Tim Slazinik, PLA, ASLA**  
LEED Green Associate GGLO

**Leann Andrews, PLA, ASLA**  
PhD Candidate, University of Washington

**Sarah Bergmann**  
Director, Pollinator Pathway

**Leslie Batten, PLA, ASLA**  
LEED Green Associate GGLO

Growing interest in urban agriculture and resilience within our urban communities has revealed a delicate relationship between pollinators and cities. Many pollinators are seen as pests and warded away with chemicals and traps. As these diverse species decline in our communities the plants in our gardens, parks, and pea patches also decline. How can Landscape Architects improve the precarious relationship and invite pollinators into the city for the benefit of our landscapes and agriculture in the years to come? Several projects will be discussed that demonstrate how planning for pollinators can be easily accommodated in project scope and how the results may surpass expectations.



#### LEARNING OBJECTIVES:

- Learn about the important role of diverse pollinator species for plant pollination and food propagation
- Gain tools for developing landscape plans that accommodate pollinators
- How designing for pollinators can also improve health and welfare

## BREAKOUT SESSION 2: ACTION

🕒 12:10-1:10pm

### Planning the Great American Landscape

📍 Room 2A

+ 1 PDH, HSW-Yes

**Christopher L. Overdorf, ASLA**

Principal Planner, Landscape Architect & Geospatial Analyst, **elm environments**



ESRI, the developer of the ArcGIS platform, has recently been developing the “Great American Landscape Plan”, a cooperative program to reconnect Americans with their natural heritage and engage them in the future of the American landscape. This session will provide an overview of how landscape architects are leading the plan development including: 1) applying a vision for a multi-sector landscape opportunity assessment at nested scales using a variety of geospatial information content and tools, 2) envisioning how the results are to be communicated to American leaders and the public in an understandable and compelling form that will educate, inform and inspire further involvement, and 3) establishing a set of systematic, evidence-based methods and tools for effective landscape planning and sustainable, resilient resource management.



#### LEARNING OBJECTIVES:

- Understand why multi-sector landscape opportunity assessments at nested scales are needed.
- Become familiar with the new tools being developed to support the Great American Landscape Plan.
- Discover ways landscape architects can engage and inform the plan.
- Learn about new geospatial datasets and how they can be applied to a variety of projects.

## BREAKOUT SESSION 2: PLACE

🕒 12:10-1:10pm

### (Re)discovering the Slow(er) City in Sneakers

Running as a tool for guiding design in the virtual sonic age

📍 Room 1A

+ 1 PDH, HSW-Yes

Elizabeth A. Umbanhowar, PLA, ASLA  
LEED AP Parametrix

Noelle Higgins, PLA, ASLA  
LEED Green Associate Communita-Atelier PS

The story of running is the story of human evolution. Some scholars have argued that the development of the hominid brain and human intelligence resulted from our capacity to run long distances. But you don't have to be a marathoner to appreciate the value of running (or to get smarter). As landscape architects, we have a tremendous opportunity to appreciate, communicate and design for human health, safety and welfare and this includes running. Aside from the obvious physical and psychological health benefits moving space provides, running offers a simple yet profound mechanism by which to cultivate place attachment and reinvigorate our engagement with the world. Running simultaneously elates us (endorphins) and grounds us by making palpable our local geographies and topographies through which we move. Running enhances our sense of achievement and discovery, fostering positive associations with healthy habits, cultivating creative thinking, and building community connection and awareness. (Re)discovering the Slow(er) City in Sneakers will examine opportunities, through slides, video and humor, for designing for movement, health and joy.



#### LEARNING OBJECTIVES:

- Peruse the history of running and human development and health
- Examine research on running, health, community, and the built environment
- Gain insights on opportunities and successful elements in design for running
- Explore communicating experiential qualities and conveying movement in landscapes

# BREAKOUT SESSION 3: PEOPLE

🕒 2:45-3:45pm

## Equity in the Design of Public Space

📍 Room 1BC

+ 1 PDH, HSW-Yes

**Mark Brands, ASLA**

Co-founder, Managing Principal, **Site Workshop**

**Shannon Loew**

**FIX (Form In Context)**

**Lynne C. Manzo, PhD - Environmental**

**Psychologist** • Associate Professor, Dept. of Landscape Architecture, UW

Seattle's rapid growth rate is increasing pressures on the more needful populations of the city. To remain a vibrant diverse city, we must quickly become sensitive to and adept at designing for all demographics, including marginalized, underserved populations and sub-market demographics. This session will focus on the issues surrounding equitable design of public spaces. It will leverage a December 2015 workshop hosted by the Seattle Design Commission to study the issue of equity in the design and operation of public space. During the session, the presenters will evaluate the design of two projects in Seattle- Capital Improvement Program (CIP) projects and Privately Owned Public Open Spaces (POPOS)- and use these completed projects to define the value of equity in the public realm for both public and private projects as well as explore strategies for how to incorporate equity into project design.



### LEARNING OBJECTIVES:

- Introduce the concept and active conversation of equitable design and why it matters
- Summarize the learning of the Dec 2015 Equity in Design Workshop hosted by the Seattle Design Commission (SDC)
- Understand resources and tools developed available for the evaluation of projects related to equitable design
- Enhance design skills related to equitable design

# BREAKOUT SESSION 3: EARTH

🕒 2:45-3:45pm

## Designing for Climate Resiliency

An overview of coastal design strategies and applications in Birch Bay trail

📍 Room 1A

+ 1 PDH, HSW-Yes



Paul Agrimis RLA, PE, PWS  
ESA, Portland Office

Grace Li Bergman PLA, GISP  
ESA, Seattle Office

This presentation provides an overview of new design strategies for coastal infrastructure/communities that are vulnerable to sea level rise and coastal surge risk. Presenters will introduce a soft shore engineering approach for managing coastal erosion and providing applications in landscape architectural design. The Birch Bay project will provide a case study in examining challenges and opportunities landscape architects faced designing trail improvements along Birch Bay.



### LEARNING OBJECTIVES:

- Review basic coastal geomorphology and engineering terms and design criteria
- Learn how to engage agencies and communities throughout the design process
- Discover challenges behind site implementation and lessons learned

## BREAKOUT SESSION 3: ACTION

🕒 2:45-3:45pm

### Moving Forward: the Role of Landscape Architects in Transit Third Avenue Transit Corridor

📍 Room 2A

+ 1 PDH, HSW-Yes

**Matthew Porteous,**  
ASLA • Principal,  
HEWITT

**Nancy Chan, ASLA**  
Landscape Designer,  
HEWITT

**Rob Kish**  
Landscape Architect,  
HEWITT

The landscape of the Seattle is rapidly changing and will continue to evolve as 60,000 more residents and 50,000 additional jobs are projected over the 10 years to come. The Downtown Seattle Association, the Seattle Mayor's office and regional transit agencies agree that transit improvements are a priority for sustainable urban growth.

Transit presents a unique opportunity to create a more humane urban experience. It is increasingly important that transit systems are multi-functional as the City densifies; they influence neighborhood identity and connect communities, and so must be democratic in nature. With more than 42,000 transit riders each day, Seattle's Third Avenue is one of the busiest transit corridors in the country.

In this session, we will discuss the role of landscape architects in transit projects throughout history. Using the context of Third Avenue, we will explore and discuss strategies and challenges to increase transit functions, improve pedestrian safety, and elevate the quality of the streetscape and pedestrian experience while creating a stronger identity downtown.

The focus will be on the evolving role of the Landscape Architect as the primary player in defining, humanizing and balancing the demands of social responsibility, safety, mobility, CPTED, and environmental obligations.



#### LEARNING OBJECTIVES:

- Explore evolving role of Landscape Architects in Urban Transit Projects
- Explore challenges and opportunities with multi-agency projects with federal funding
- Discuss the impacts of changes to the Downtown Seattle Transit Tunnel

## BREAKOUT SESSION 3: PLACE

🕒 2:45-3:45pm

### Stormwater, Identity, and Social Purpose

Working with Stormwater to Create Place



📍 Room 2BC

+ 1 PDH, HSW-Yes

David A. Rubin, ASLA, FAAR  
Principal, LAND COLLECTIVE

Stormwater management is no longer an onerous agency-driven requirement for development, but is becoming an asset-driving, integrated design element that can be a positive factor in socially-purposeful landscapes and identity. In this session, three case studies are presented that utilize stormwater management as an inclusive and integrated design element: Washington Canal Park, Potomac Park Levee – both in Washington, D.C. – and Westfield’s Grand Junction Plaza in Indiana. Embracing the challenges and prospects of significant flooding, all three projects demonstrate that stormwater conditions can be lead to extraordinary, socially-purposeful landscapes.



#### LEARNING OBJECTIVES:

- Explore creative and integrative stormwater strategies as elements of design.
- Appreciate the varied approaches and collaborative processes between landscape architects and agencies that comply with regulations while fostering social engagement.
- Learn about trends in stormwater management that may inform the design of public spaces, facilitating landscapes that encourage human interaction.
- Understand by example of built work how strategies for stormwater management can reinforce identity and foster pedagogy.

# BREAKOUT SESSION 4: PEOPLE

🕒 4:30-5:30pm

## Accessible Design Capitalizing on the Benefits of Nature

📍 Room 1BC

+ 1 PDH, HSW-Yes



**Audrey West, PLA, ASLA**  
Principal, **The West Studio**

**Ann Dinthongsai**  
Landscape Designer, **The West Studio**

From an accessibility standpoint, how can we ensure that people with diverse accessibility needs, including people with visual, hearing, mobility, and cognitive impairments, have a quality user experience that maximizes their benefits from nature? This session will address this important question through discussion of our role as landscape architects in providing quality experiences that maximize the benefits of nature, and making sure that the experiences we design are inclusive of everyone, regardless of age, cognitive or physical ability, state of health, etc. We will also conduct an Ability Box exercise with the group to help us think outside our own box, and provide examples of design for inclusive experiences that promote a sense of control, independence, inclusion, safety, and respect.



### LEARNING OBJECTIVES:

- Clarify the difference between ADA compliance, Universal Design and Inclusive Design.
- Learn why it's important to go beyond the minimum requires of the ADA Act.
- Review the benefits of nature within various environments.
- Understand what constitutes an inclusive experience.
- Gain tips on how to approach design for inclusiveness.



# BREAKOUT SESSION 4: EARTH

🕒 4:30-5:30pm

## Landscape Materials Sustainable Sources and Systems

📍 Room 1A

+ 1 PDH, HSW-Yes

Philip "P.J." Benenati, LEED GA  
GGLO

Bron Heintz, LEED AP BC+C  
GGLO

How do we know we're choosing the best materials for a project? Appearance, texture, durability are important, but we must also consider health, energy and lifecycle. Design professionals are looking more closely at the materials we use and are developing tools for making better decisions about the products we specify. Join us to take a deeper look into material transparency, lifecycle analysis, and how we can begin to work with suppliers and clients to better understand materials and make better, more sustainable decision.



### LEARNING OBJECTIVES:

- Review basic coastal geomorphology and engineering terms and design criteria
- Learn how to engage agencies and communities throughout the design process
- Discover challenges behind site implementation and lessons learned

# BREAKOUT SESSION 4: ACTION

🕒 4:30-5:30pm

## Design Practice in Flux

Building a dynamic practice with 'next generation' designers

📍 Room 2A

+ 1 PDH, HSW-No

**Christian Runge**  
Associate, Mithun

**Chuck McDowell**  
Mithun

**Caitlin Squier-Roper**  
Mithun

**Martha Cox**  
Mithun

**Susanna Burrows**  
Mithun

As technology shifts the knowledge base from traditional hierarchical firm structures and mentorship to distributed models, how do firms redesign their practices, processes and organization to respond to this rapid change? New practitioners will share their observations and the organization of their firm's new leadership. Using a range of project examples, these 'next generation' landscape designers will discuss how office and team culture influence interdisciplinary work, the challenges and opportunities to bring research into design practice, share their transitions from academia to the profession and how their fresh perspectives have influenced projects and the firm.



### LEARNING OBJECTIVES:

- Participate in a discussion about the changing roles of the 'next generation' of designers.
- Learn how rapidly changing technology is impacting design process and roles of young professionals
- Consider how office/team culture and structure influence interdisciplinary creative process
- Discuss the challenges and future opportunities for bringing science + research into design practice



## BREAKOUT SESSION 4: PLACE

🕒 4:30-5:30pm

### A Healthy Tomorrow Active Design Strategies for Buildings, Open Spaces and Neighborhoods

📍 Room 2BC

+ 1 PDH, HSW-Yes



**Marieke Lacasse, ASLA, LEED BD+C**  
Principal, Senior Landscape Architect **GGLO**

**Alicia Daniels Uhlig NCARB, LEED Fellow**  
Principal, Director of Sustainability, **GGLO**

Tomorrow's health starts with Active Design today. Active Design is an evidence-based approach to design that aims to transform the fabric of our communities to promote health. It involves designing buildings, streets, and neighborhoods to provide increased opportunities for daily physical activity and access to healthy foods. This session will address specific implementation concerns for creating more sustainable communities and neighborhoods using Active Design. The presentation will:

- provide a brief overview of the Active Design Guidelines;
- offer detailed case studies demonstrating effective implementation of Active Design strategies;
- provide suggestions to close the gap between design and measured performance by discussing a post-occupancy evaluation; and
- encourage participants to identify new ways to integrate the concepts of Active Design into projects, programs, and policies at their own organizations.

#### LEARNING OBJECTIVES:

- Become familiar with NYC's Active Design Guidelines and available resources and tools to utilize in practice and research
- Understand Active Design's synergistic relationship with universal and sustainable design
- Recognize successfully implemented Active Design strategies in a range of planning, building, and open space projects
- Learn specific urban and building design strategies to promote health of users through physical activity while reducing environmental impacts





## CONFERENCE SPONSORS



## KEYNOTE SPONSOR



## THURSDAY RECEPTION SPONSOR





## EXHIBITORS

**Toro**

**LandscapeForms**

**Pacific Earth Works,  
Inc.**

**Basalite Concrete  
Products**

**Ironsmith**

**Northwest  
Playground  
Equipment**

**Quick Crete Products**

**Columbia Cascade  
Company**

**Highwire, Inc.**

**Contech Engineered  
Solutions**

**Allplay Systems**

**PlayCreation**

**SiteLines Park and  
Playground Products**

**Ennis-Flint**

**EnviroTech Soil  
Solutions, Inc.**

**Cedar Grove**

**Frank J. Martin  
Company**

**Play & Park Structures**

**Carter Evans Wood  
Concepts**

**Old Town Fiberglass  
Planters**

**Hilfiker Retaining  
Walls**

**Tournesol Siteworks**

**Rain Bird**

**RTB Company**

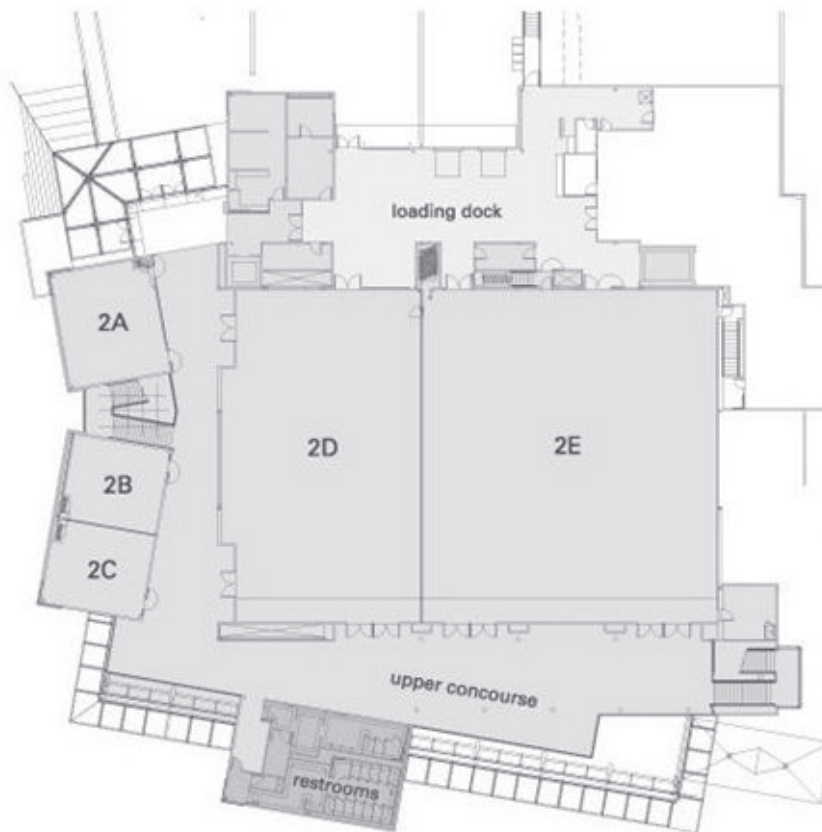
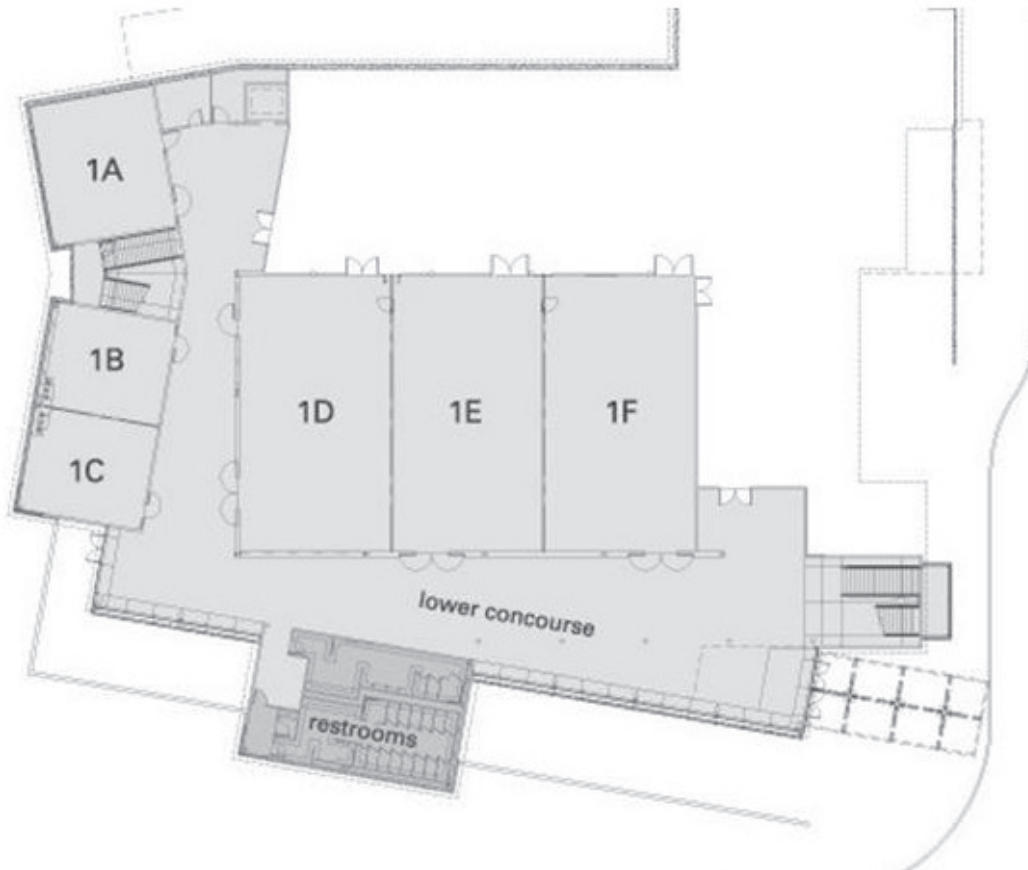
**Trexiana**

**ATS International  
Flooring**

**Avalon Aquatics, Inc.**

**SimTek Fence**

**DeepRoot**





Three horizontal lines are positioned to the right of the logo. Below these, the page contains a series of approximately 25 horizontal lines, providing a template for text entry.





Three horizontal lines for a header section, followed by 25 horizontal lines for the main body of the page, providing a template for text or notes.







Lined writing area with 24 horizontal lines.





Three horizontal lines are positioned to the right of the brain logo. Below these, the page contains 25 additional horizontal lines, providing a large area for text or notes.



Three horizontal lines for a header, followed by 25 horizontal lines for the main body of the page, providing a template for writing.





AMERICAN SOCIETY OF  
LANDSCAPE ARCHITECTS

Washington Chapter

2150 N 107th St Suite 205  
Seattle, WA 98133  
[www.wasla.org](http://www.wasla.org)

