

Trail Town Design Workshop



Sultan Design Team



Sultan Access sites – Sportsmans Park, Sultan River Park, Steelhead County Park



Desired products:

Town to Trail Connection:

TOWN-TO-TRAIL
CONNECTIONS

- PATHWAY CONNECTING SULTAN TO RIVER
- CAMPGROUND LOOP (RV, TENT) -50-60 PEOPLE
- CONNECTION TO AMENITIES IN TOWN
- SIGNAGE PLAN
- VIEWPOINTS
- SIGNAGE FOR PARKS
- PICNIC AREAS
- CONSISTENT SIGNAGE THROUGHOUT TRAIL W/ RESPECT FOR RESOURCE
- CONNECT TO SCHOOLS, SENIORS, OUTDOOR CLASSROOMS

- SAFE WALKING ROUTES
- INTERPRETATION TRAILS ON RESTORATION SITE
- TRIBAL, CULTURAL, TRAIN HISTORY & STORIES
- FESTIVAL/ EVENT SPACE
- CONNECT TO REGIONAL TRAIL
- PLAN FOR PARKING GROWTH
- PLAY ELEMENTS FOR KIDS
- BOAT RENTALS NEAR SKATE PARK + LAUNCH
- WILDERNESS COLLEGE
- CONNECT TO NATIVE PLANT MUSEUM @ HIGH SCHOOL

- TROUT FARM
- BICYCLING CORRIDOR THRU KYKOMIGH - BIKE RENTALS
- BOAT HOUSE → SEE THE BOATS
- BEER, COFFEE, ICE CREAM
- BATHROOMS
- VOLUNTEER-DRIVEN/ SCHOOLS
- WILDLIFE - LOOKOUT SHELTER
- COMMUNITY ART @ BIRD CAM
- HABITAT RESTORATION
- BEAVERS!
- CONNECT TO SIDE CHANNELS
- ON AGO, NUROE LOGS

Desired products:

River access:

RIVER ACCESS SITES + FACILITIES

WATER TRAIL ACCESS PEDESTRIAN

- ☐ REMOVE INV. SPP. - STEELHEAD PARK
- ☐ CAR CAMPING - CAMPING - WATER ACCESS ONLY TAKEOUT
- ☐ LOOP - RESTORED SLOUGH + SIDE CHANNELS + FOREST
- ☐ SEASONAL USE
- ☐ USE BRIDGES FOR SIGNS "STEELHEAD PARK 0.5 MI"
- ☐ USE APP FOR LATEST RIVER HAZARDS & CONDITIONS
- ☐ MILE MARKERS

RM 112.0 TOWN AHEAD

RIVER ACCESS CTD...

STEELHEAD PARK TRAIL & INTERPRETIVE FEATURES

CULTURE, HISTORY, NATURAL PROCESSES, DIRECTIONS, ORIENTATION

- NEW PKG.
 - 30-40 (w/room) @ STEEL-HEAD
- SULTAN RIVER PARK
 - BOAT RENTAL (NEXT TO SKATE PARK)
 - OUTDOOR CLASSROOM
 - NATIVE PLANT / MEDICINAL CULTURAL GARDEN
- TRAIL TO OSPREY PK.
- TRAIL TO BOAT LAUNCH

RIVER ACCESS

- 40'x40' ROLLING/CANOE DUMPING TRAINING SITE.
- SALMON SPAWNING INTERPRETIVE SITE.
- INV. SPP. REMOVAL VOLUNTEER PROGRAM - KIDS AS STEWARDS
- OSPREY PARK INV. SPP. REM.
- LEAVE BEAVER DAMS ALONE
- HABITAT ENGINEERS
- SHINGLE BOLT SLOUGH (SIDE CHAN.)
- SOUTH SLOUGH (SIDE CHAN.)
- LARGE WOOD + INTERP.

Desired products:

Trail town as hub:

RAIL TOWN CONCEPT
□ HUB FOR INFO + CONNECT

- RIVER ACCESS CAMPING

- ACCESS TO FRESH WATER

- SANICAN

- 'NEAR' VEHICLE ACCESS

- WAY FINDING KIOSK

- EX. LOCATION BEST?

- LIST OF WHERE TO GET FOOD

- RIVER ~~IS~~ SIGNAGE

- SIGNAGE ON UPSTREAM SIDE OF BRIDGE

- SIGNAGE FOR RIVER TRAVELERS

- AP W/ RIVER INFO
"POST HAZARDS"

- ACCESS POINTS W/ RIVER INFO

- WARNING SIGNAGE ON RIVER

- SIGNAGE FOR 'RESPECT OF RESOURCE

- MILE MARKERS

- EDUCATIONAL SIGNAGE

EDUCATIONAL - SAFETY
INTERPRETIVE - HABITAT/ RIVER CHARACTERISTICS
CULTURAL - NATIVE
SAFETY - EARLY SETTLEMENT

- OUTDOOR CLASSROOM

- UTILIZE EXISTING

- ADD NEW ON STEELHEAD OR?

- INTERPRETIVE SIGNAGE

- NATIVE HISTORY

- RESTORATION

- CULTURE OF EARLY SETTLEMENT

- ROCK FESTIVAL SPACE

- CONCESSIONARE -
- BOAT RENTAL

- ENGAGE SCHOOLS

- GATEWAY - WAYFINDING

- BOAT MUSEUM/ BOAT HOUSE
COMMUNITY CENTER

- BEER

- COFFEE

- ICE CREAM

- BATHROOM

- TRAINING TANK
OR POND

(COMBINE FOR HABITAT)

- CAPITALIZE ON VIEWS

Sultan program:

SULTAN PROGRAM

GENERAL

- PATHWAY CONNECTING TRAIL TO RIVER + V3/V5
- BIKE CORRIDOR THROUGHOUT
- COMMUNITY ART
- HABITAT RESTORATION
- SAFE WALKING ROUTES
- CONNECT TO REGIONAL TRAILS (EXISTING + FUTURE)
- PICNICK AREAS
- HIGHLIGHT VIEWPOINTS
- PED. BRIDGE OVER RIVERS

SULTAN
CYKONISH

GENERAL

SIGNAGE

- WAYFINDING
- LIST OF AMENITIES
- INFO FOR RIVER USERS
- EDUCATIONAL
 - SAFETY
 - RIVER CHARACTERISTICS
- INTERPRETIVE
 - HABITAT
- CULTURAL
 - NATIVE
 - EARLY SETTLEMENT

Sultan program:

RIVER PARK

- BOAT HOUSE / CONCESSIONAR
- FESTIVAL / EVENT SPACE
- TRAIL TO OSPREY PARK
- TRAINING POOL FOR BOAT HOUSE
- ENHANCE CULTURAL CONNECTION
- CONNECT TO CITY OWNED PARKS
- "GREEN-STREET" BETWEEN PARK AND SKATE PARK

SPORTSMANS

- BIKE RACK
- SWIMMING BEACH
- PADDLE TAKE OUT
- FISH MONITOR (EDUCATIONAL)
- IMPROVE VEHICLE CIRCULATION
" PARKING
- RAIN GARDEN
- IMPROVE BOAT LAUNCH
- ENHANCE GAZEBO (ADA)

STEELHEAD

- CAMPING
 - CAR / RV
 - RIVER ACCESS
- WILDLIFE VIEWING AREAS
- ENHANCE SIDE CHANNELS
- FESTIVAL / EVENT SPACE
- PARKING
- REMOVE INVASIVE SPECIES
- TRAILS
- HABITAT / REG. POND

Context



Connections



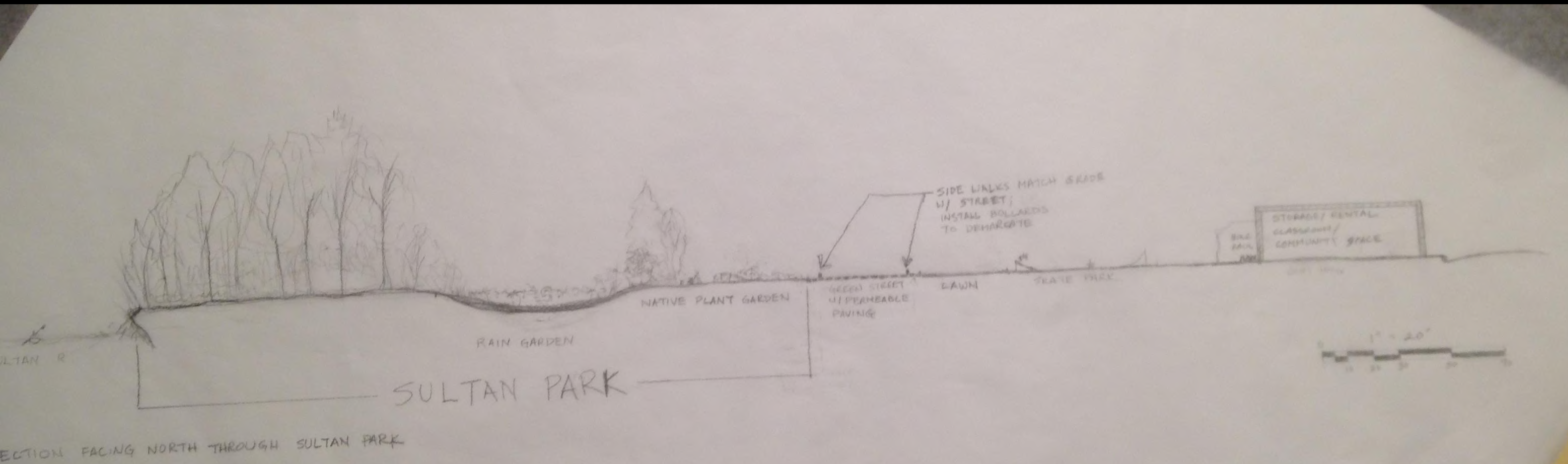
Sportsman's and Sultan River Park



Sportsman's and Sultan River Park



Sportsman's and Sultan River Park



Steelhead County Park – Scheme #1



STEELHEAD PARK

SEPARATED BOAT LAUNCH AND CAMPING
1" = 100'



Steelhead County Park – Scheme #2

The map illustrates a proposed development for Steelhead County Park, focusing on a combined boat launch and camping area. Key features and labels include:

- Waterways:** Sultan River (top left), Skykomish River (bottom), and Mann Road (top right).
- Infrastructure:** Sultan River Bridge, Mann Road, and Sultan River Park.
- Park Features:**
 - Load/Unload area near the Sultan River.
 - Practice Pond.
 - Group Camping (Boat In) area.
 - Invasive Control zones.
 - Hand Carry Boat Launch area.
 - View Point.
 - Overlook area.
- Scale:** 1" = 100'.

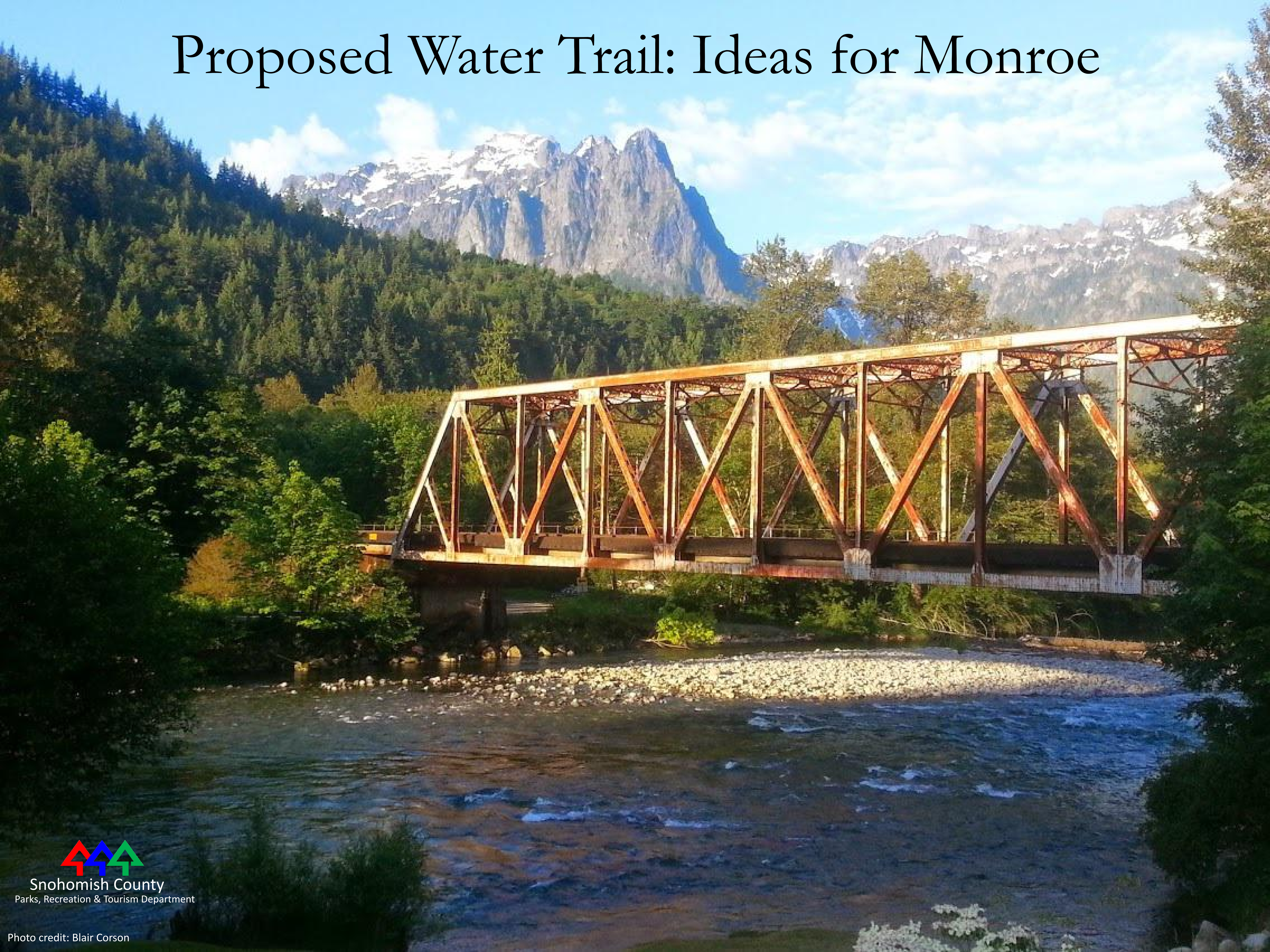
STEELHEAD PARK
BOAT LAUNCH COMBINED W/ CAMPING
1" = 100'

Sultan



Sultan and Skykomish Rivers by Diana Fairbanks, Ed.D.

Proposed Water Trail: Ideas for Monroe

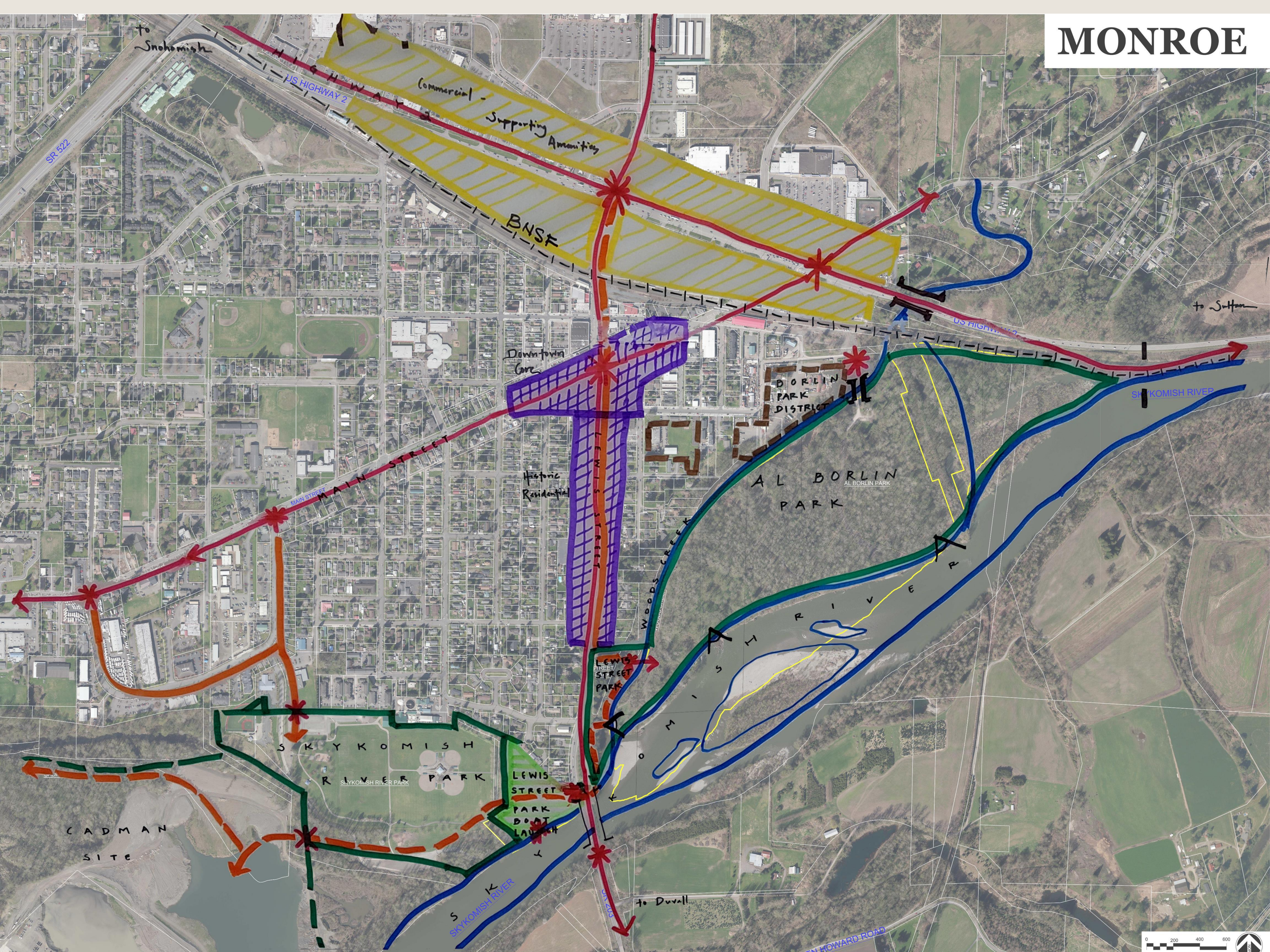


Snohomish County
Parks, Recreation & Tourism Department

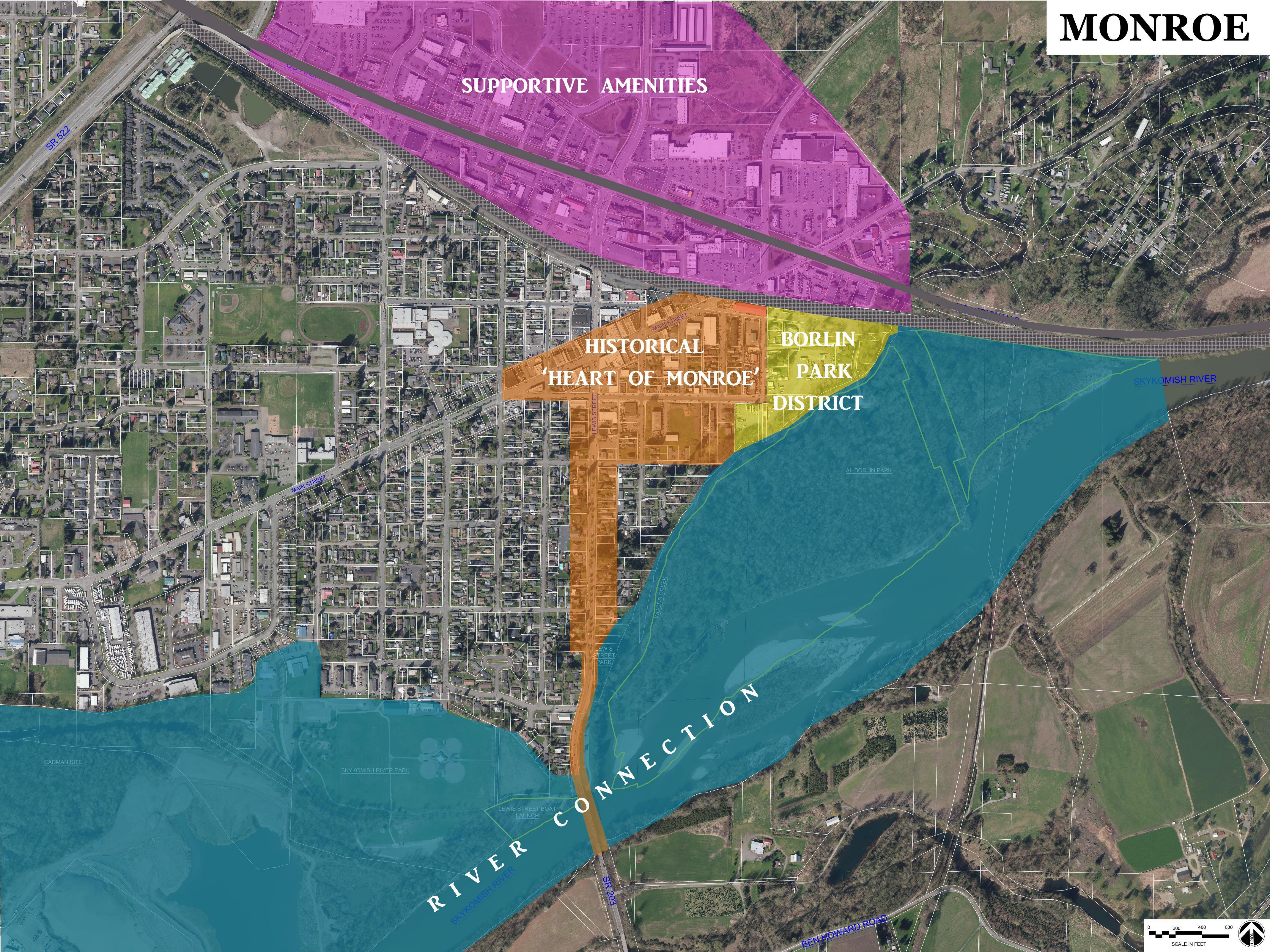
Town to Trail Connections

Downtown Monroe

MONROE



MONROE



SUPPORTIVE AMENITIES

HISTORICAL
‘HEART OF MONROE’

BORLIN
PARK
DISTRICT

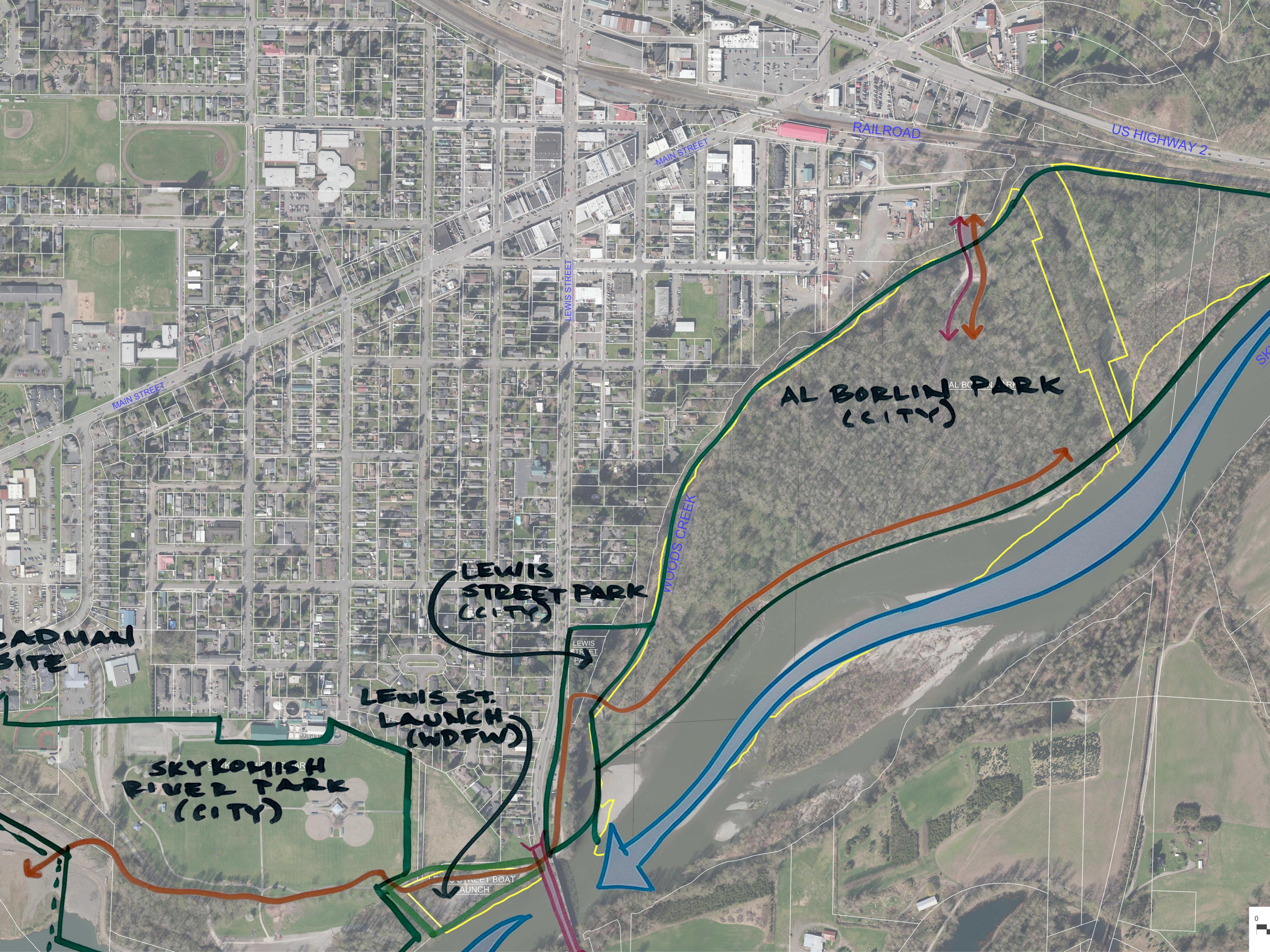
RIVER
CONNECTION

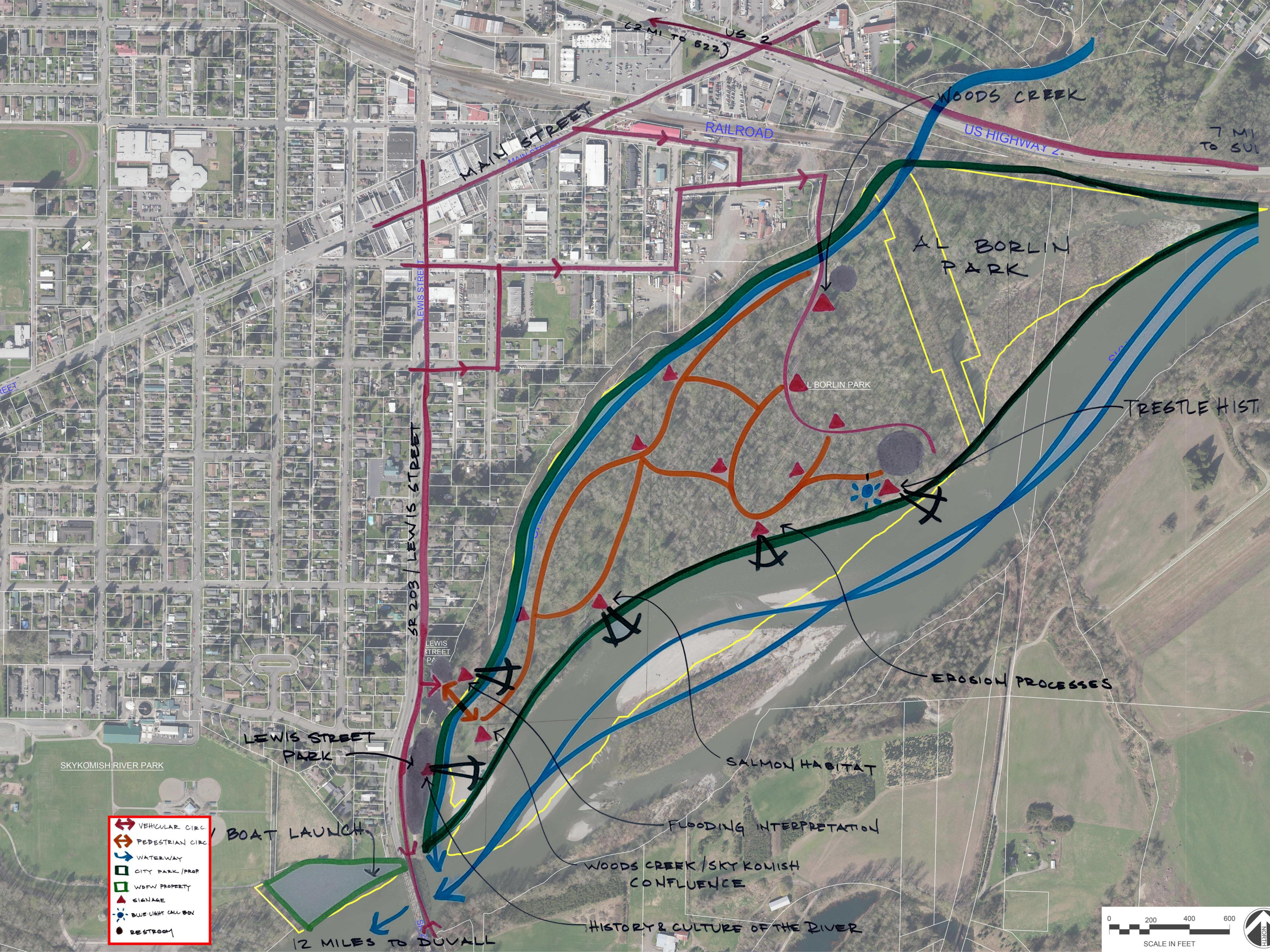


River Access Sites and Facilities

Al Borlin Park

Lewis Street Park

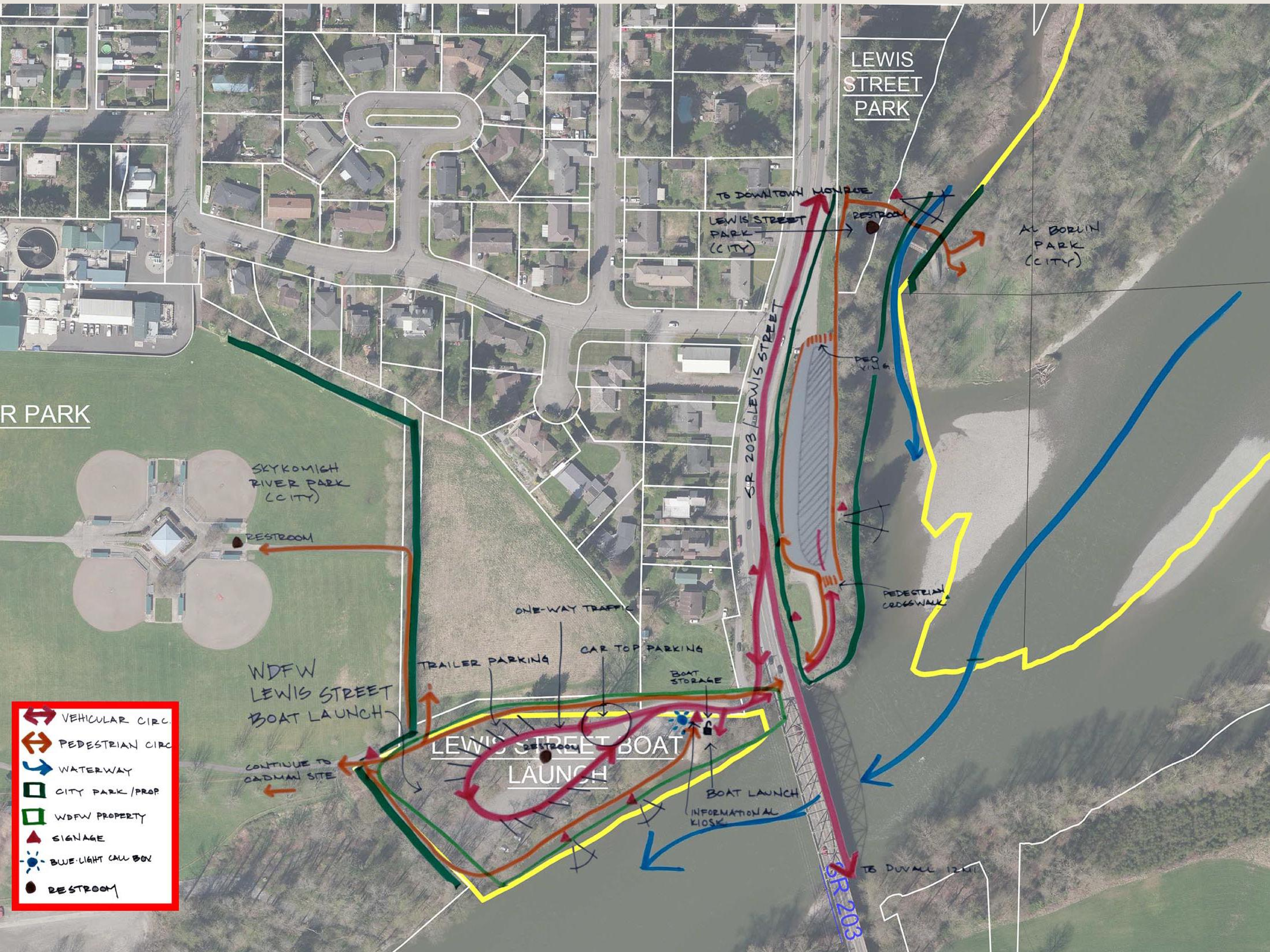




- VEHICULAR CIRC.
- PEDESTRIAN CIRC.
- WATERWAY
- CITY PARK/PROP
- WDFW PROPERTY
- SIGNAGE
- BUE-LIGHT CALL BOX
- RESTROOM



AL BORLIN PARK



LEWIS STREET PARK

TO DOWNTOWN MONROE

LEWIS STREET PARK (CITY)

RESTROOM

AL BORLIN PARK (CITY)

R PARK

SKYKOMISH RIVER PARK (CITY)

RESTROOM

ONE-WAY TRAFFIC

CAR TOP PARKING

TRAILER PARKING

BOAT STORAGE

WDFW LEWIS STREET BOAT LAUNCH

LEWIS STREET BOAT LAUNCH

CONTINUE TO CADMAN SITE

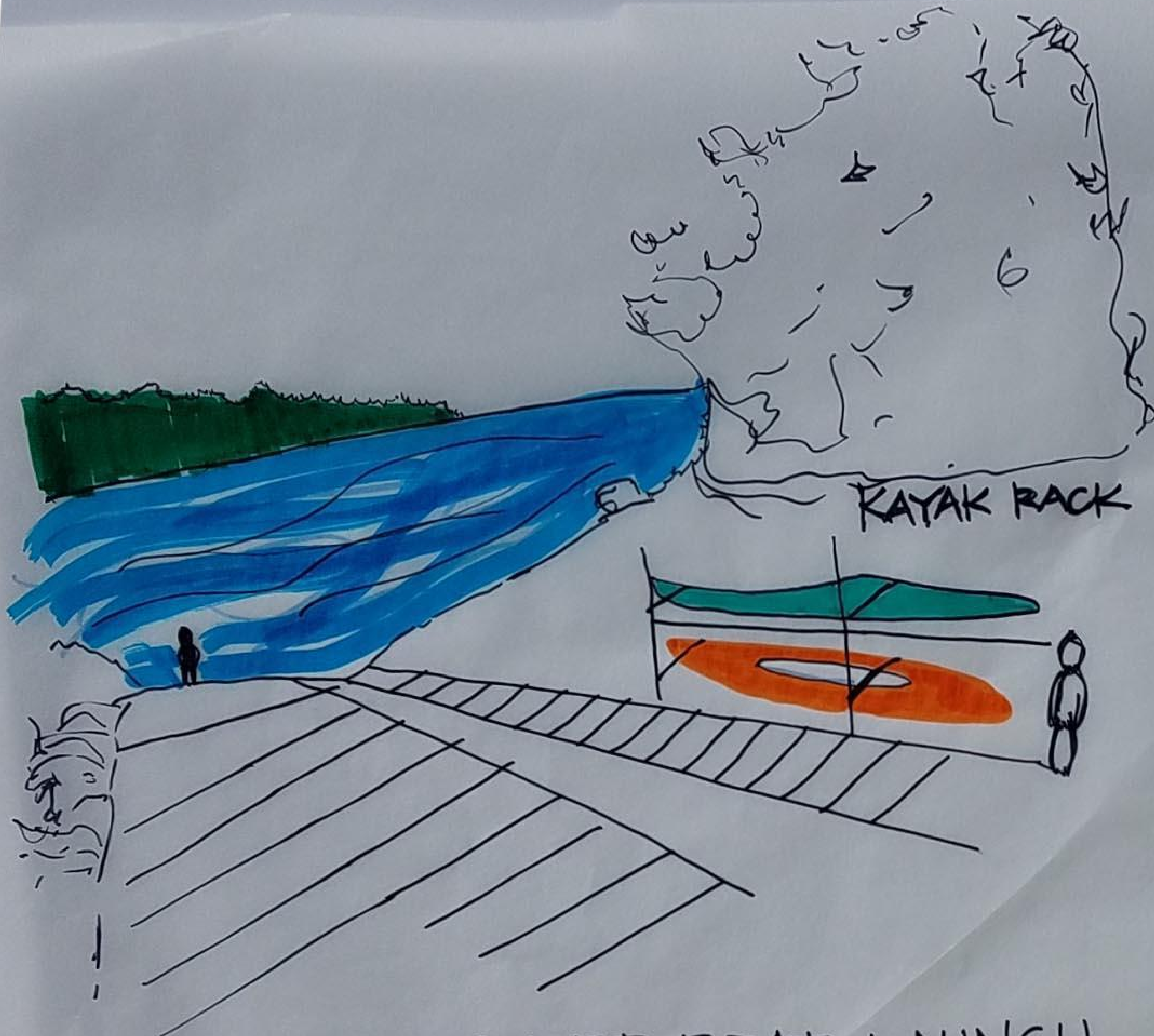
BOAT LAUNCH INFORMATIONAL KIOSK

PEDESTRIAN CROSSWALK

SR 203

TO DUVALL 12 MI

- VEHICULAR CIRC.
- PEDESTRIAN CIRC.
- WATERWAY
- CITY PARK /PROP.
- WDFW PROPERTY
- SIGNAGE
- BUE LIGHT CALL BOX
- RESTROOM



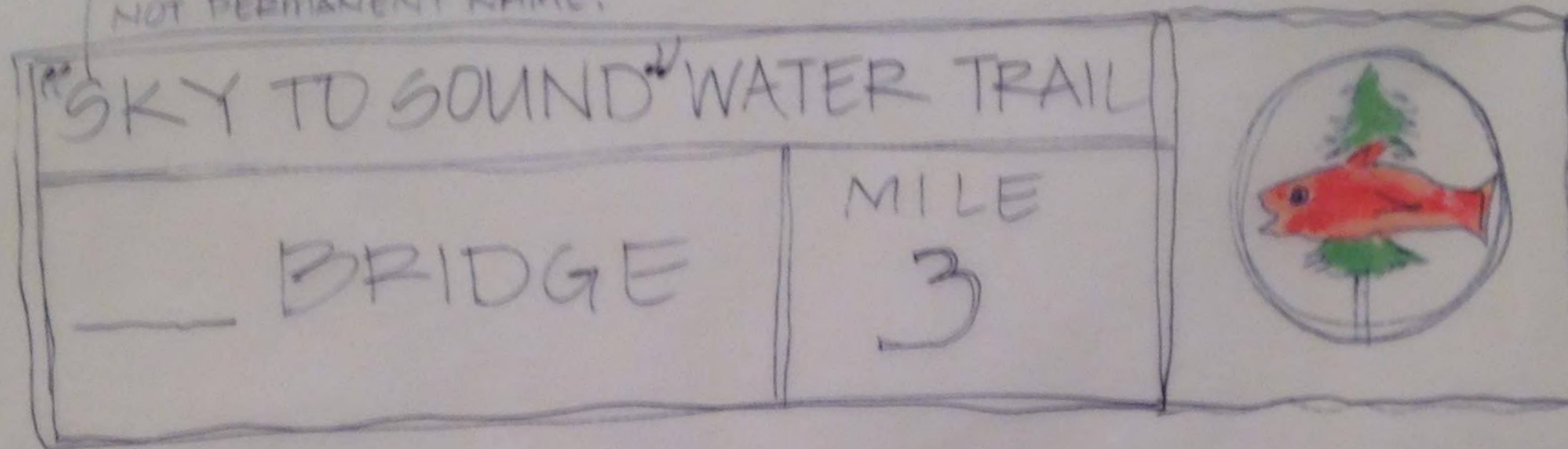
LEWIS STREET BOAT LAUNCH

Signage

WATER TRAIL

MILE MARKERS / PLACE MARKERS

SKYKOMISH TO SAUGH GEA...
NOT PERMANENT NAME?



SKY TO
SOUND
WATER
TRAIL



MILE
3

CAMPGROUND

WATER TRAIL

MILE 3

~~KING TIDE~~

NON-OBTRUSIVE WATER TRAIL SIGNAGE

SKY TO SOUND TRAIL

UNTIL BRIDGE

MILE
3

↑
SIGNAGE



Signage:



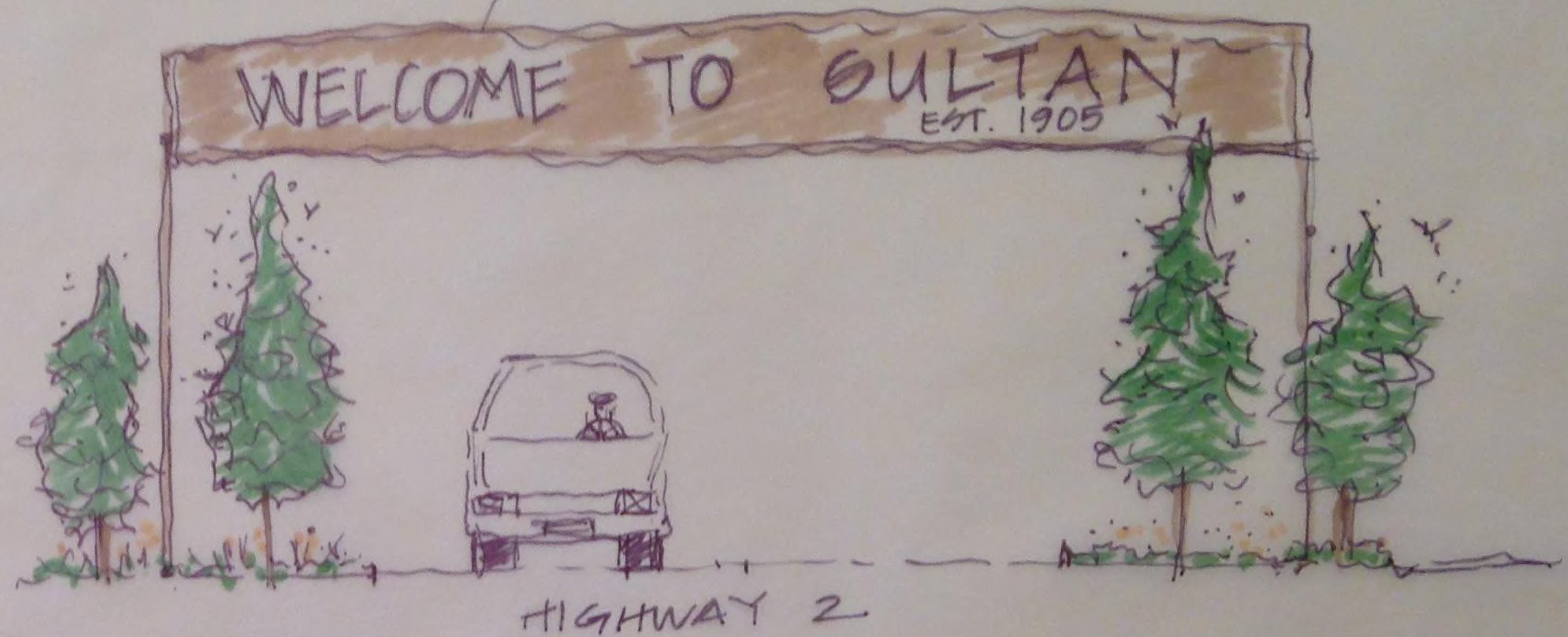
GATEWAY SIGNAGE IDEAS

Signage:

(ALONG HIGHWAY 2)



ROADFRONT SIGNAGE

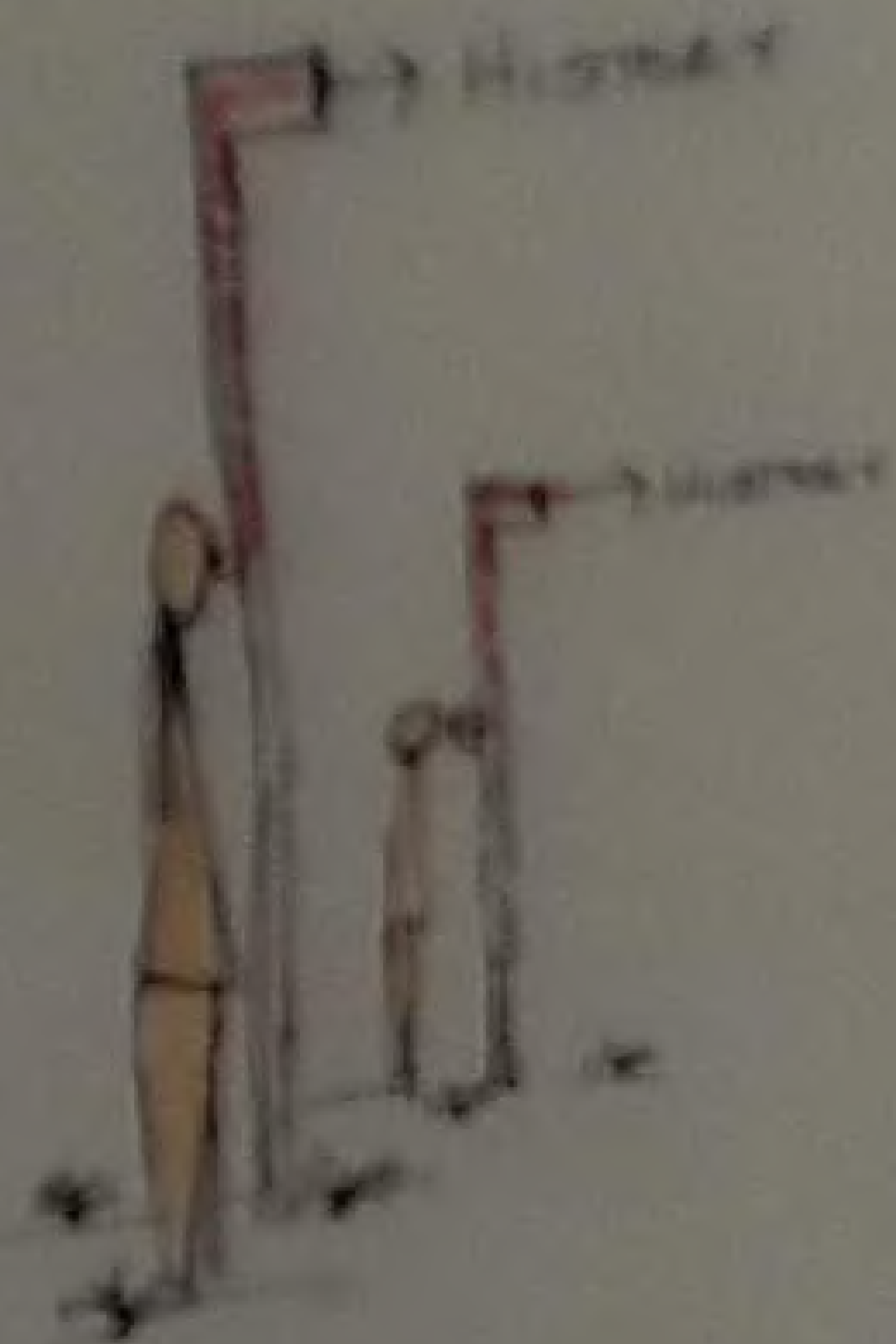


COMMUNITY ART/MURALS



WAYFINDING





TAKING A PEER BACK IN TIME



WHAT DOES THE RIVER DO?



LED RING
SHOWING
CURRENT FLOW
OF RIVER



PEAK CALL-OUT AT OVERLOOKS