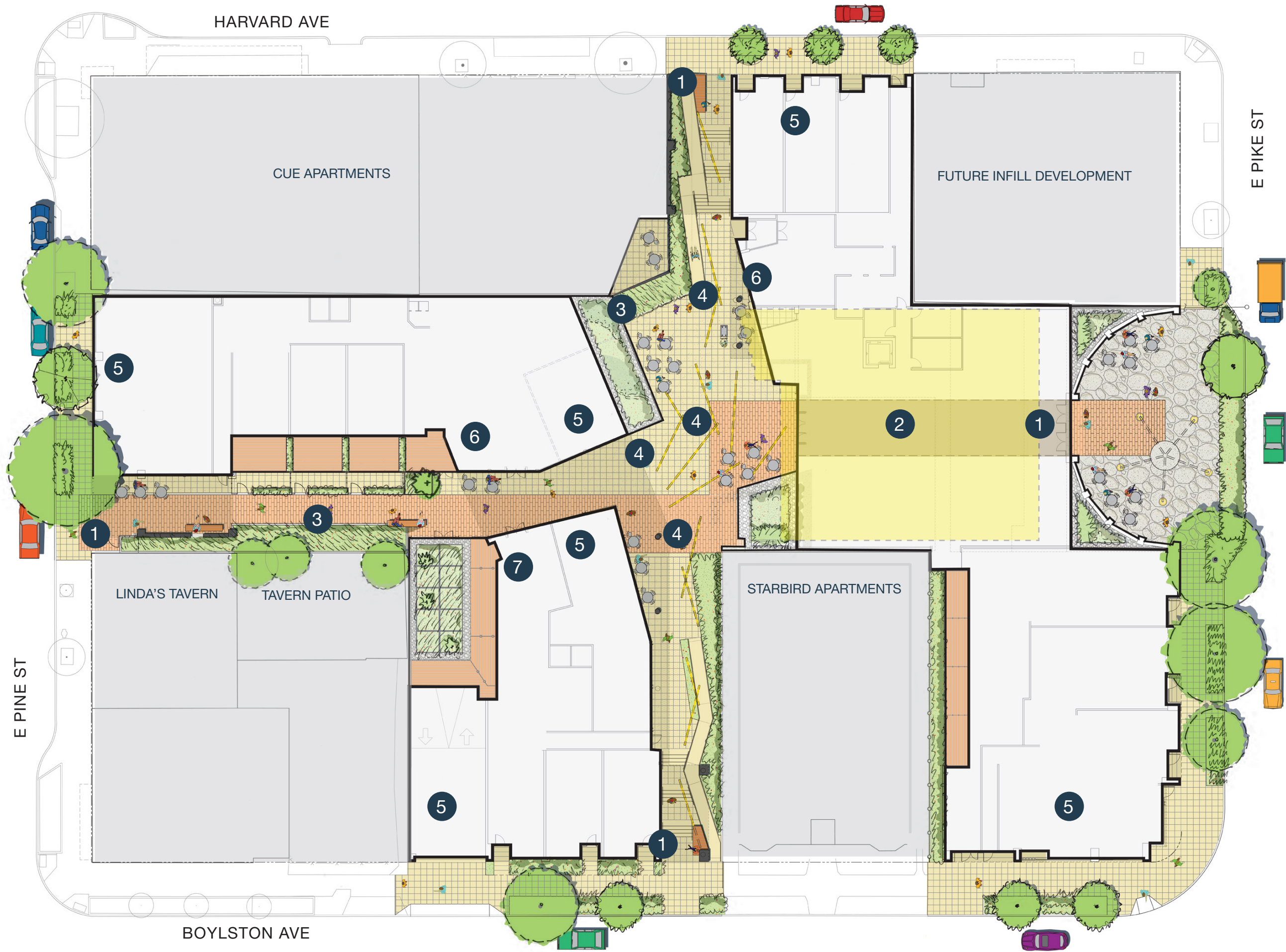




**PIKE MOTORWORKS**



- 1 SITE ENTRY
- 2 MARKET HALL
- 3 SITE ARTWORK
- 4 CATENARY LIGHTS
- 5 RETAIL SPACE
- 6 LOBBY/LEASING
- 7 FITNESS CENTER



The unique, curved entry plaza is setback from Pike Street. The preserved facade creates a large gathering space and visual entry to the building without impeding upon public right-of-way.

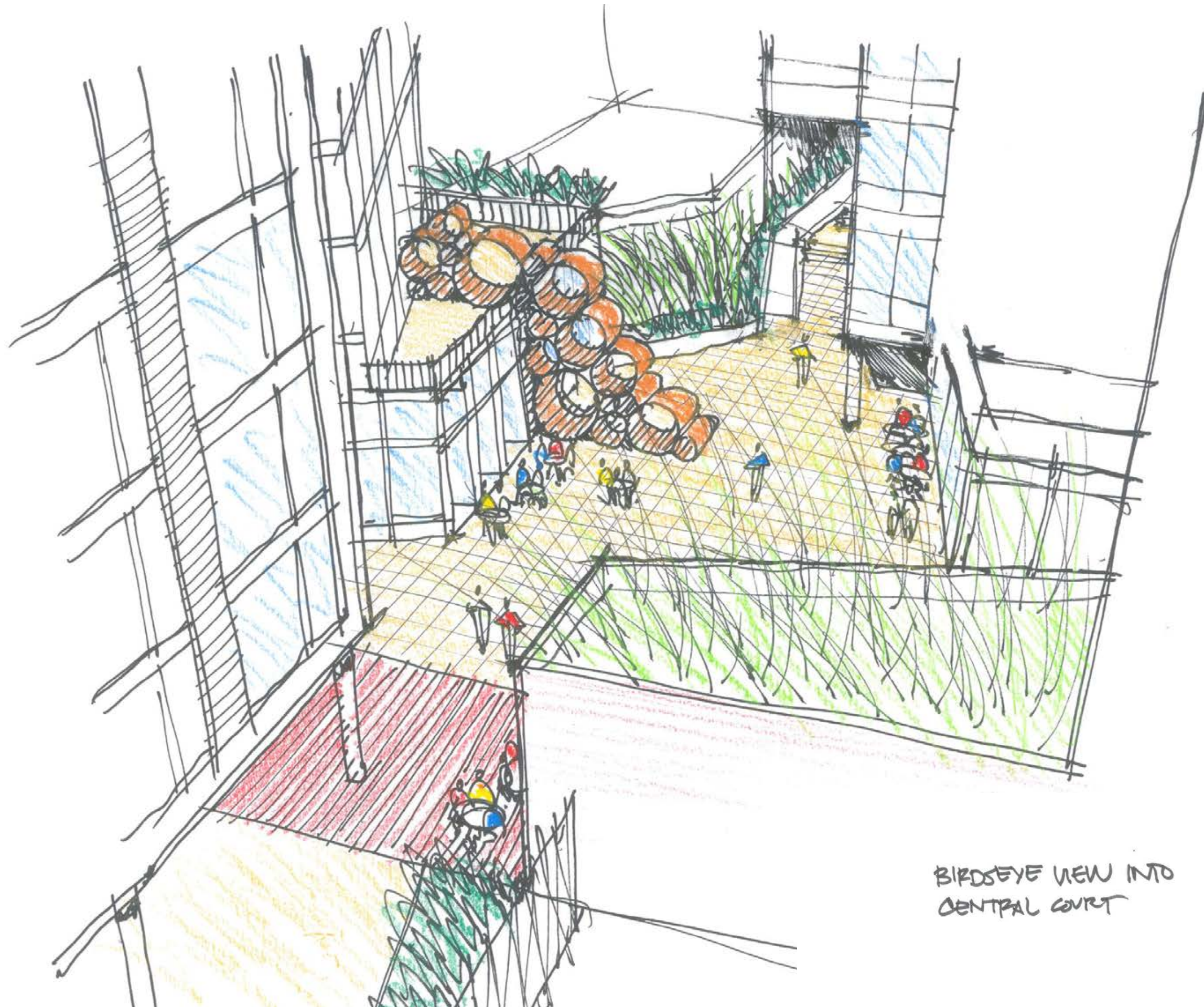


Two internal passages running north/south and east/west draw people into the heart of the project - an urban courtyard activated by ground floor retail, live/work units, and a signature local brewpub.

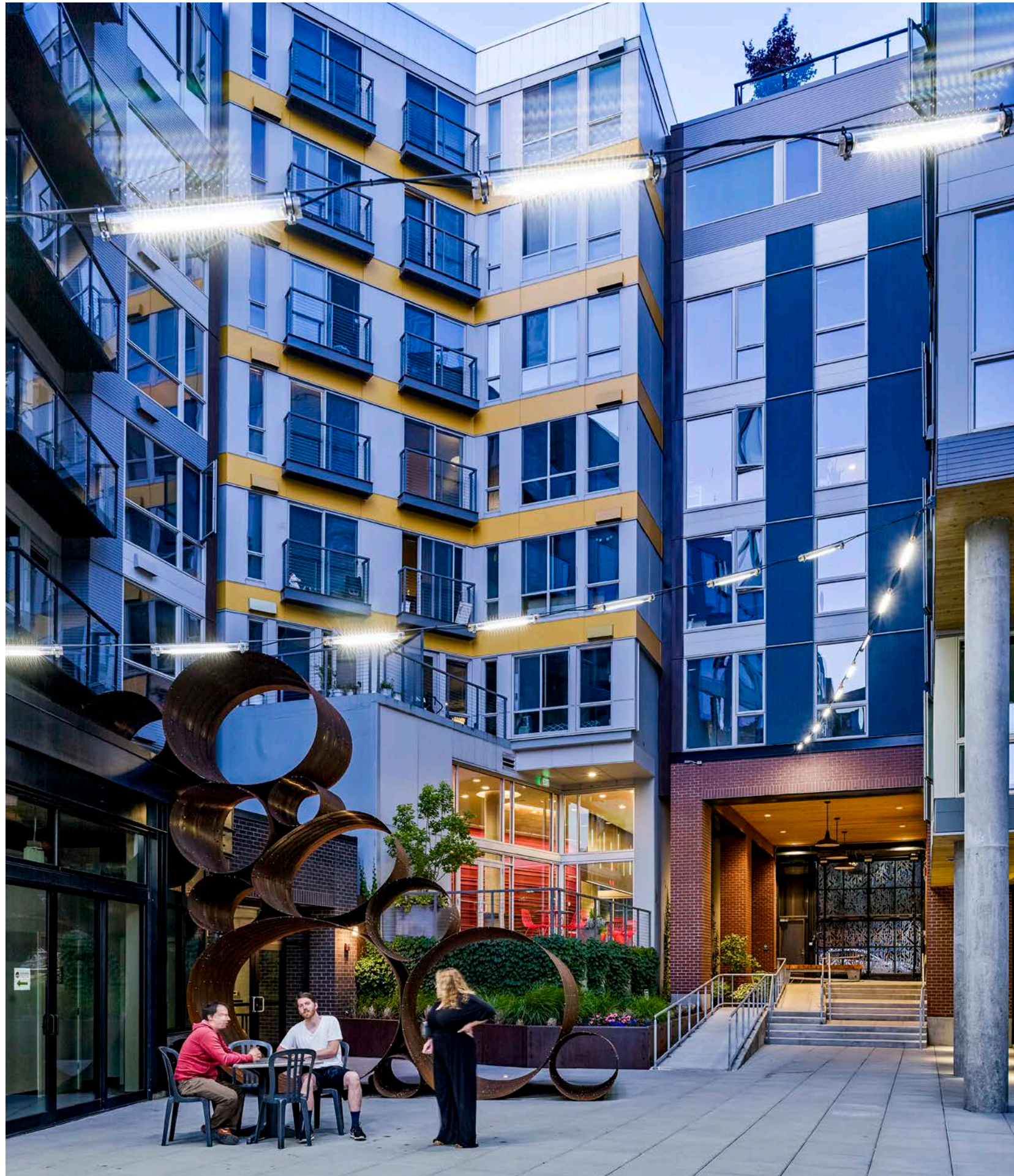
Catenary lights create a ceiling effect to separate the plaza from the residential units above.



Visual interest and delight is found in artwork incorporating motorcycle and bicycle wheel frames along the site's eastern passage. At the street edge, a large wrought iron gate announces entry to the site without impeding sight lines.



BIRDEYE VIEW INTO  
CENTRAL COURT



The internal courtyard is anchored by “Capital” - a custom urban art sculpture by artist DeWitt Godfrey - and catenary lights that evoke the site’s history as a showroom on “Auto Row.”

Constructed of warped and weathered 18-gauge Cor-Ten steel cylinders, Capital reflects project’s “refined industrial” aesthetic.



Pike Motorworks' rooftop planters and green roof provide some measure of stormwater mitigation while also visually enhancing rooftop amenity space for the neighboring Cue Apartments.



